



## Nuclear New Build

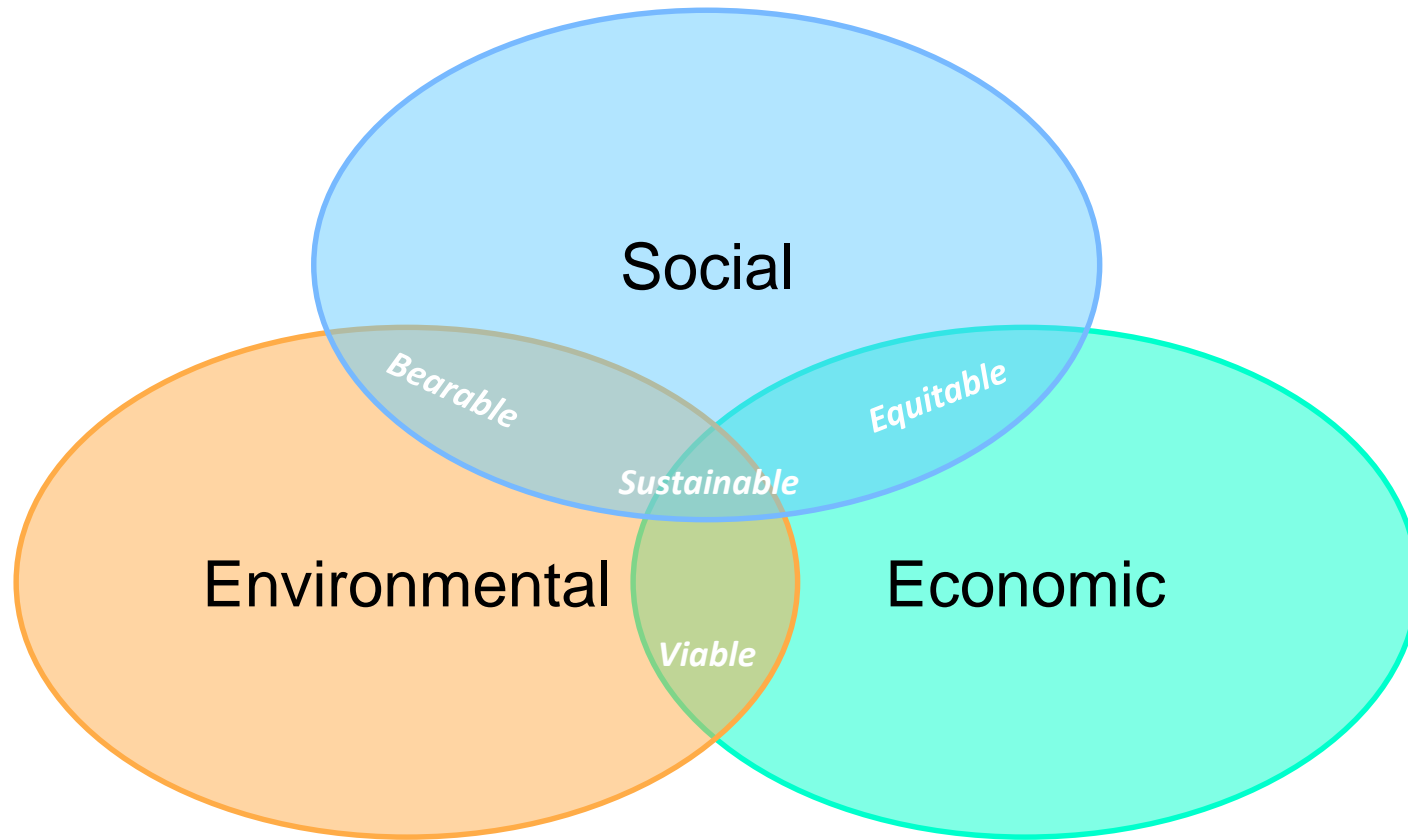
# The Hinkley Point C Project

Sustainability: June 2017

David Sutton – Civils Delivery Director



# Sustainability – triple bottom line...



# Environmental Protection - carbon



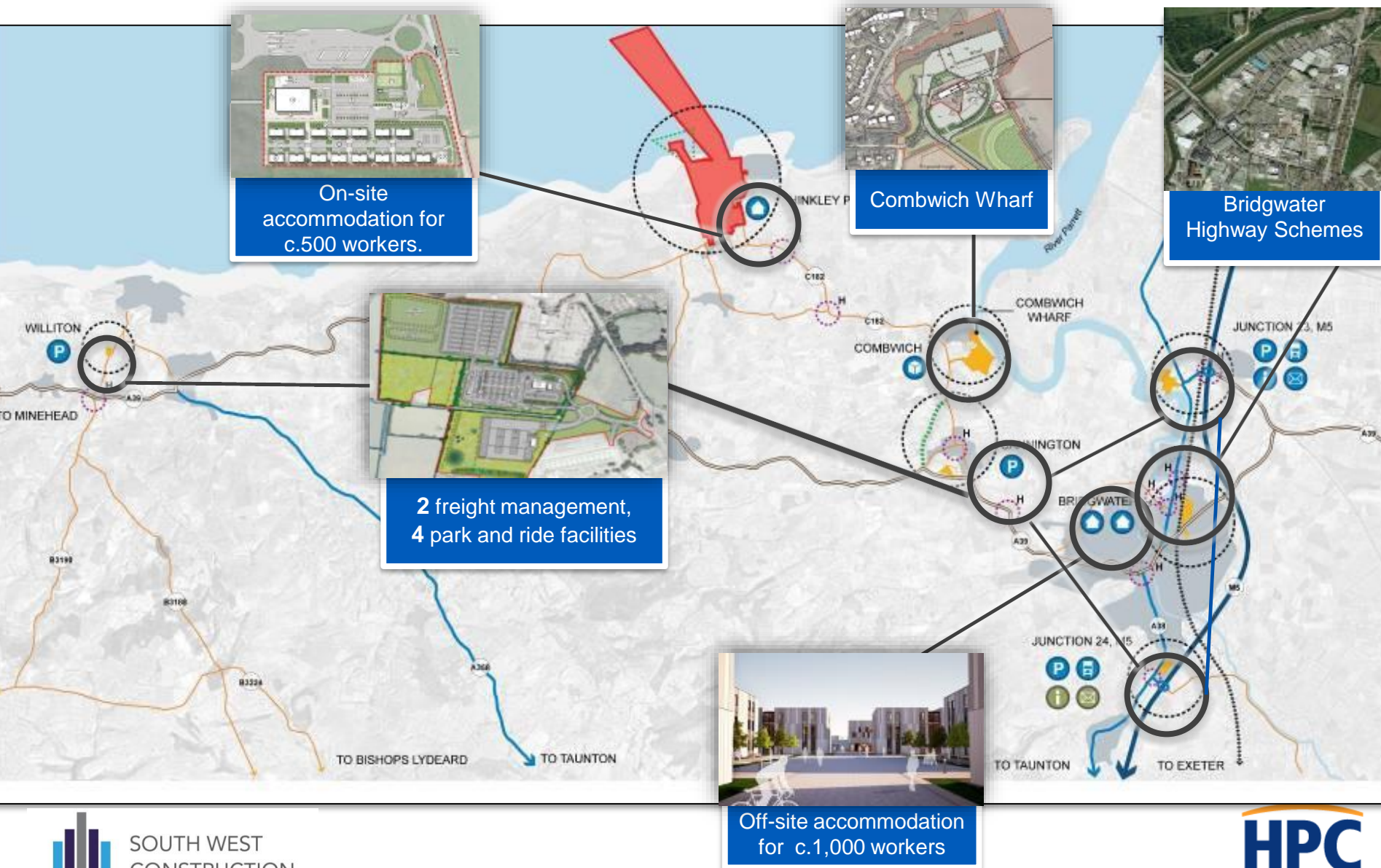
SOUTH WEST  
CONSTRUCTION  
SUMMIT

Not Protectively Marked

@June 2017 EDF Energy plc. All rights reserved

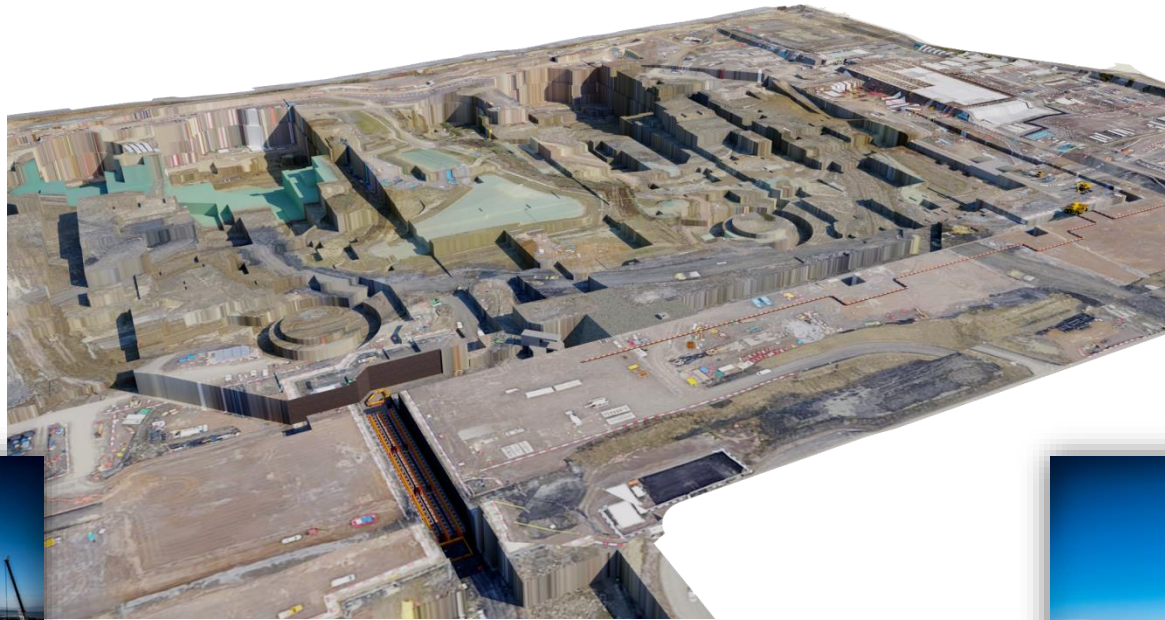
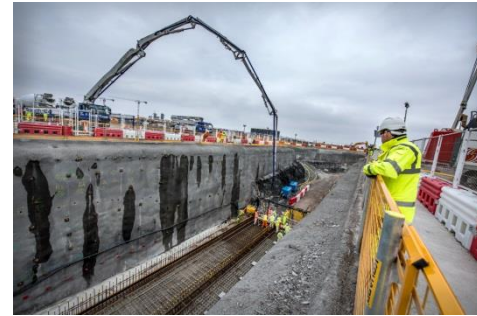


## Environmental Protection – efficient logistics

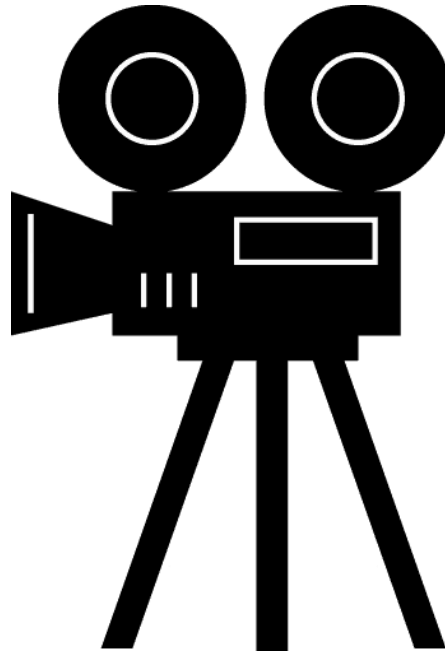




# Environmental Protection – site enabling



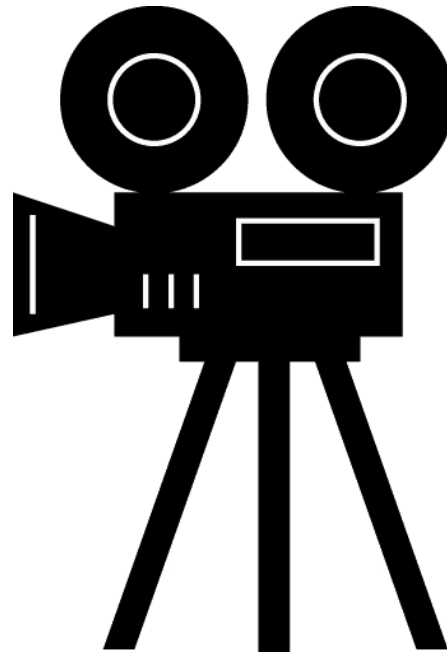
# Environmental Protection – site enabling



# Digital build / lean construction



# Environmental Protection – digital build / lean construction





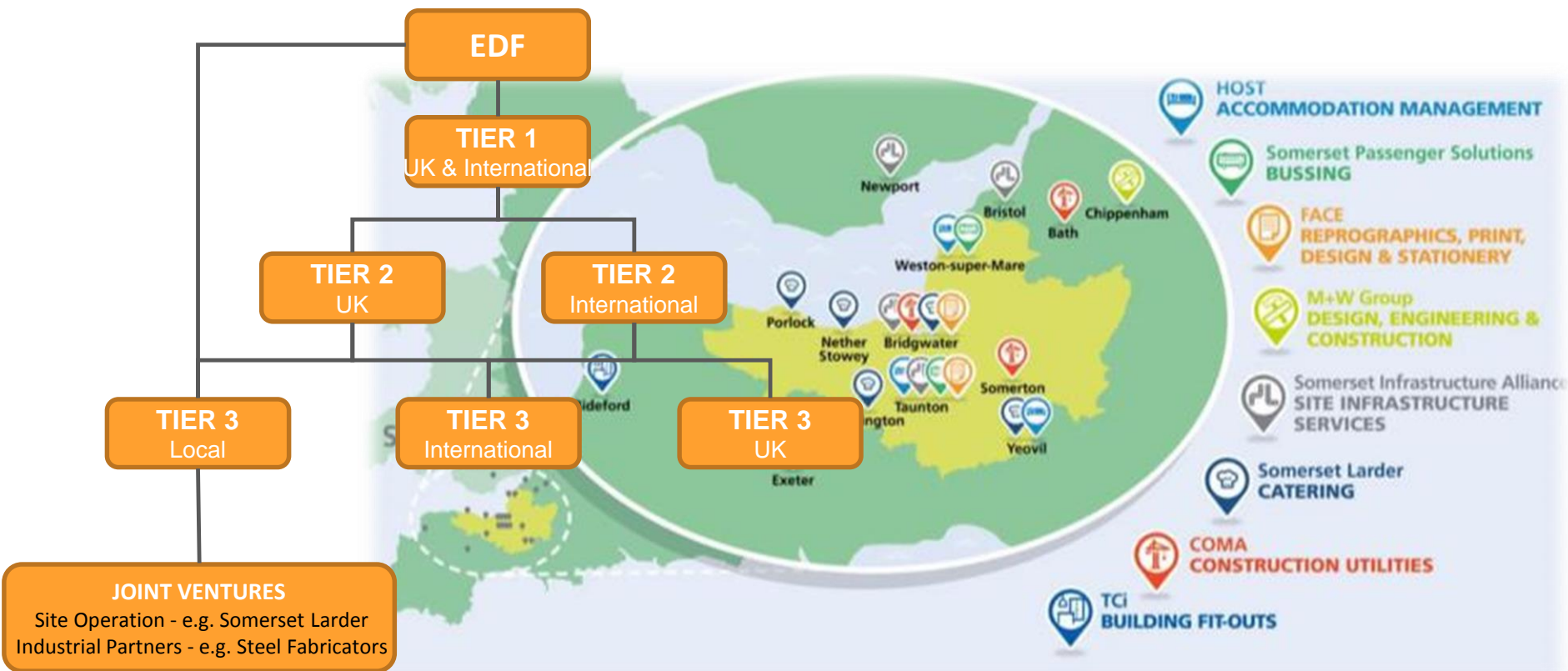
# Economic Development



*Complex international supply chain...*

# Economic Development

## *Developing the Local Supply Chain and Joint Ventures*



[www.hinkleysupplychain.co.uk](http://www.hinkleysupplychain.co.uk)

# Social Development

## HPC “Inspire” Programme

## Skills Investment

## Sustainable Employment

### EDUCATION



### SKILLS



### EMPLOYMENT



*A Pathway from Education, Through Training to Employment  
Helping to close a national skills gap*

# Social Development - skills



*Steel fixer cohort*





# Social Development - employment

OCTOBER 2016 ■ ISSUE 5 ■ THE POINT 9

## WOMEN IN CONSTRUCTION: SITE SPECIAL • WOMEN IN CONSTRUCTION: SITE SPECIAL



### AMY ACHIEVES HER DRIVING AMBITION

**ALWAYS DRIVEN:** Amy couldn't wait to take the controls of her 100-tonne dump truck.

Amy Kelly knows a good opportunity when she sees one.

Offered the chance to train as a dump truck driver with Kier BAM, Amy didn't hesitate. Now she's fully qualified to operate the massive 100-tonne Komatsu 785 rigid dump truck.

#### POTENTIAL

Amy was driving a minibus and helping out in the stores when her supervisor, Grahame Marshall, spotted her potential and asked if she would be interested in doing the training.

"I thought 'go for it' – it was too good an opportunity to miss," said Amy, who started work at HPC as a Civils General Worker for Kier BAM in September 2014.

"I was blown away when I saw the size of the truck up close. It's a different world from driving anything else because it's so big."

#### FULLY QUALIFIED

Her training, which was structured as a National Vocational Qualification (NVQ), started with five weeks in the passenger seat observing how to operate the truck. She then took the controls herself with a qualified driver as passenger before finally driving solo for a further six weeks on the path to becoming a fully qualified dump truck operator.

Amy sees driving the truck as more of a mental challenge than a physical one. She said: "You've got to concentrate all the time and be aware of everything going on around you."

"Driving in the rain can be scary as the roads get slippery – you just need to take it slow and steady."

### SAFETY FIRST

It's not exactly site chic, but new personal protective equipment (PPE) for women is a cut in the right direction – and safer too.

This autumn, for the first time, HPC will provide PPE designed to fit female workers – so they'll no longer have to struggle with jackets, trousers and overalls tailored for the male workforce.

"In the 21st century every employer should be able to offer PPE that's safe and fits properly, whether it's for men or women," said Construction Manager Emma McDavid. "Lots of women have had to take up trousers and shorten arm lengths so they aren't in danger of catching their clothing on equipment."

"We're not trying to make women feel a million dollars, just make sure they're comfortable and safe in clothes that are made for their own gender."

She added: "We ran an event earlier on in the year at Cammington Court, which looked at the issues related to diversity on the HPC project. The incredible support we had means we've been able to move forward with great initiatives like this one."

#### Interested in supporting and encouraging more women to try the construction industry?

Then why not become a part of HPC's up-and-coming Initiative looking to support, retain and inspire women working on site?

The initiative is working with contract partners to look at welfare, facilities, successful role models and how to keep women motivated and supported – which will benefit the entire workforce.

Anyone interested in getting involved in the initiative should contact Emma at [emma.mcdavid@edf-energy.com](mailto:emma.mcdavid@edf-energy.com).

**THE RIGHT FIT:** (left to right) Joanne Moss, Site Engineer; Emma Keon, Environment Manager and Gamma Borley, Section Engineer, modelling the new PPE.



#### POWER POINTS

**DID YOU KNOW?** According to Randstad\*, women are expected to make up 26% of the UK construction industry by 2020.

\*Women in the UK Construction Industry in 2016 report

# Summary - Sustainable Benefit for the South West



Energy Skills Centre



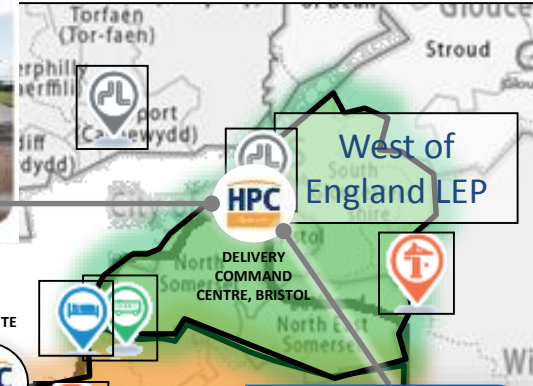
South West Nuclear Hub



Energy Innovation Centre



Construction Skills and Innovation Centre



West of England LEP

SKILLS

Inspire Education Programme



EDUCATION

Heart of the South West LEP

COMMUNITY INVESTMENT



Community Fund



Sports Pitches



Chilton Trinity swimming pool

SUPPLY CHAIN

- FACE:** Reprographics and Design
- COMA:** Construction Utilities
- Somerset Larder:** Catering
- Somerset Passenger Solutions:** Bussing
- HOST:** Accommodation
- Somerset Infrastructure Alliance:** Site Infrastructure
- TCI:** Building Fit-Out





# Thank You



SOUTH WEST  
CONSTRUCTION  
SUMMIT

Not Protectively Marked

@June 2017 EDF Energy plc. All rights reserved

