

L&G Homes

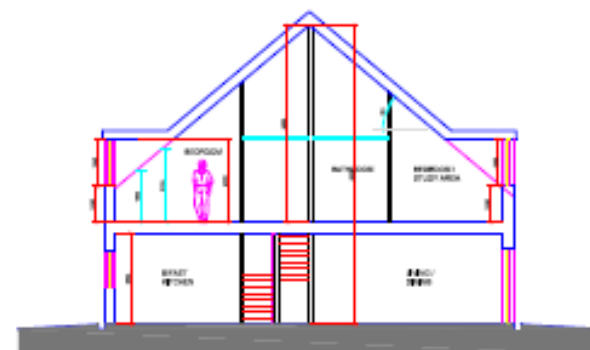
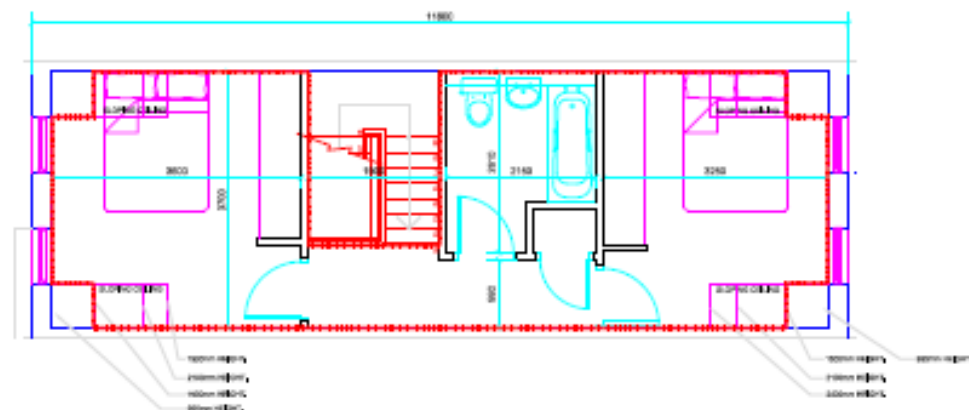


1. CAD-CAM Design
2. Cross Laminated Timber
3. Precision Engineered Panels
4. Volumetric Assembly
5. Delivery and Completion

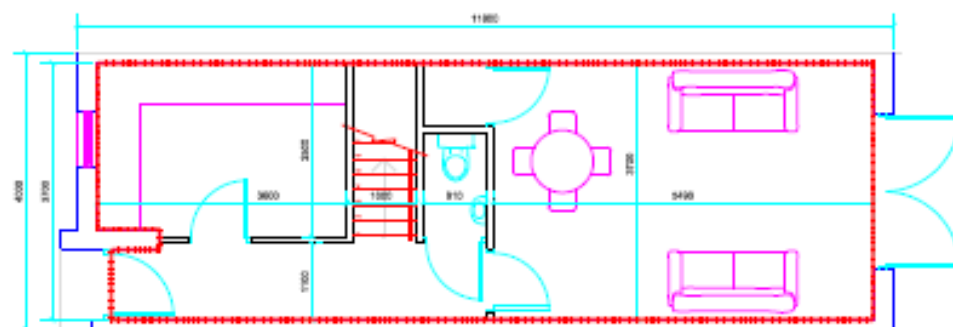
CAD-CAM Design



1st FLOOR PLAN



SKETCH SECTION @ 1:100



GROUND FLOOR LAYOUT

HOUSE LAYOUT PLANS

4m WIDE ; 2 BEDS ; 1,5 FULL STOREY FRONT; DORMER TO REAR

HOUSE TYPE 15

G.I.A. (SALES) = 76 m² 818 ft²

G.I.A. (CONSTRUCTION) = 80,7 m² 868 ft²

MEASURED IN ACCORDANCE WITH >
'CODE OF MEASURING PRACTICE A GUIDE FOR SURVEYORS AND VALUERS' - RICS CODE OF PRACTICE, 3rd Edition

Drawings of this type are only valid for the
purpose of the building contract and are not for sale.

NOTES

REV DATE DESCRIPTION BY

SKETCH

0.01

REVISIONS AND NOTES

PROJECT FILE

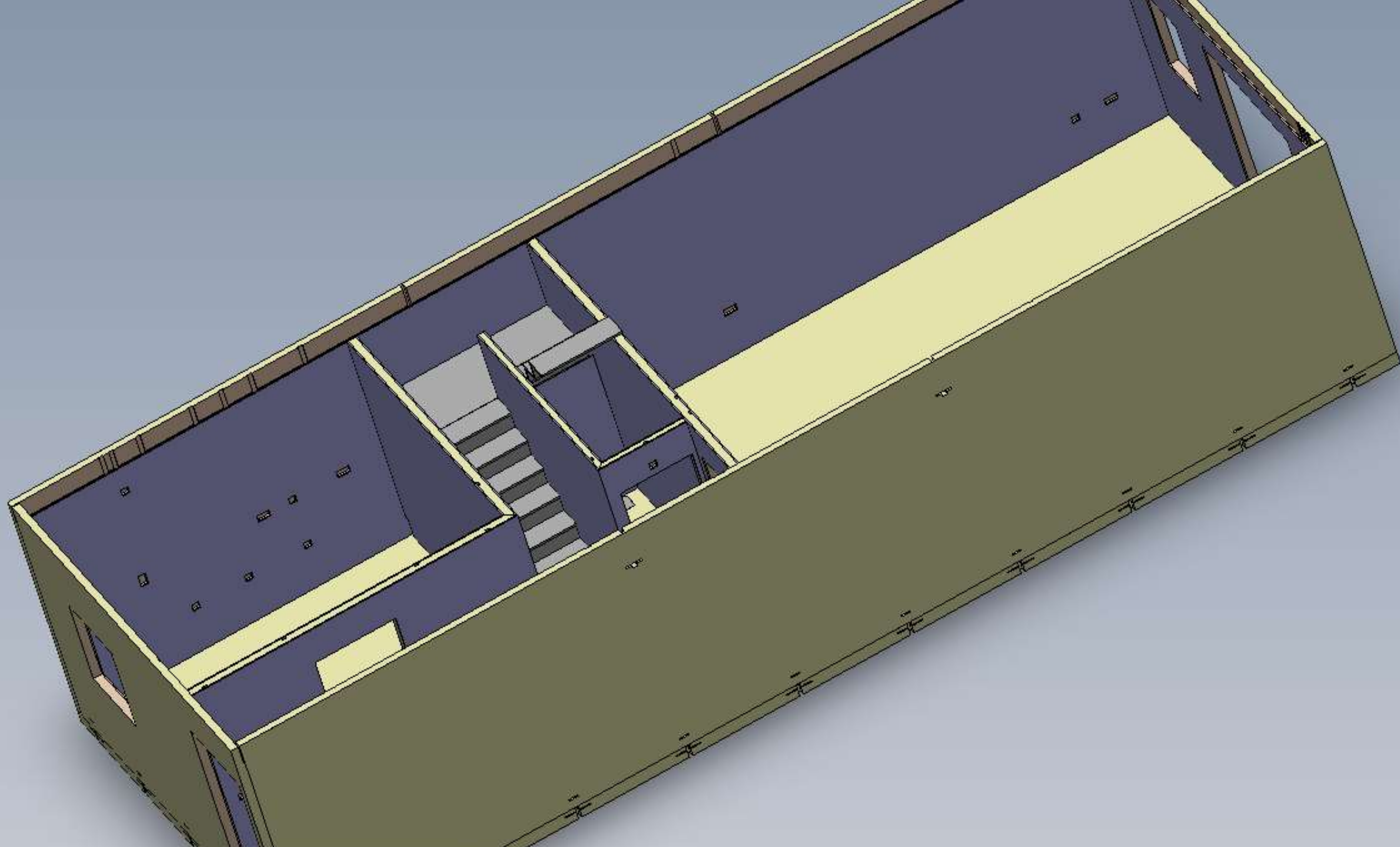
REVISIONS

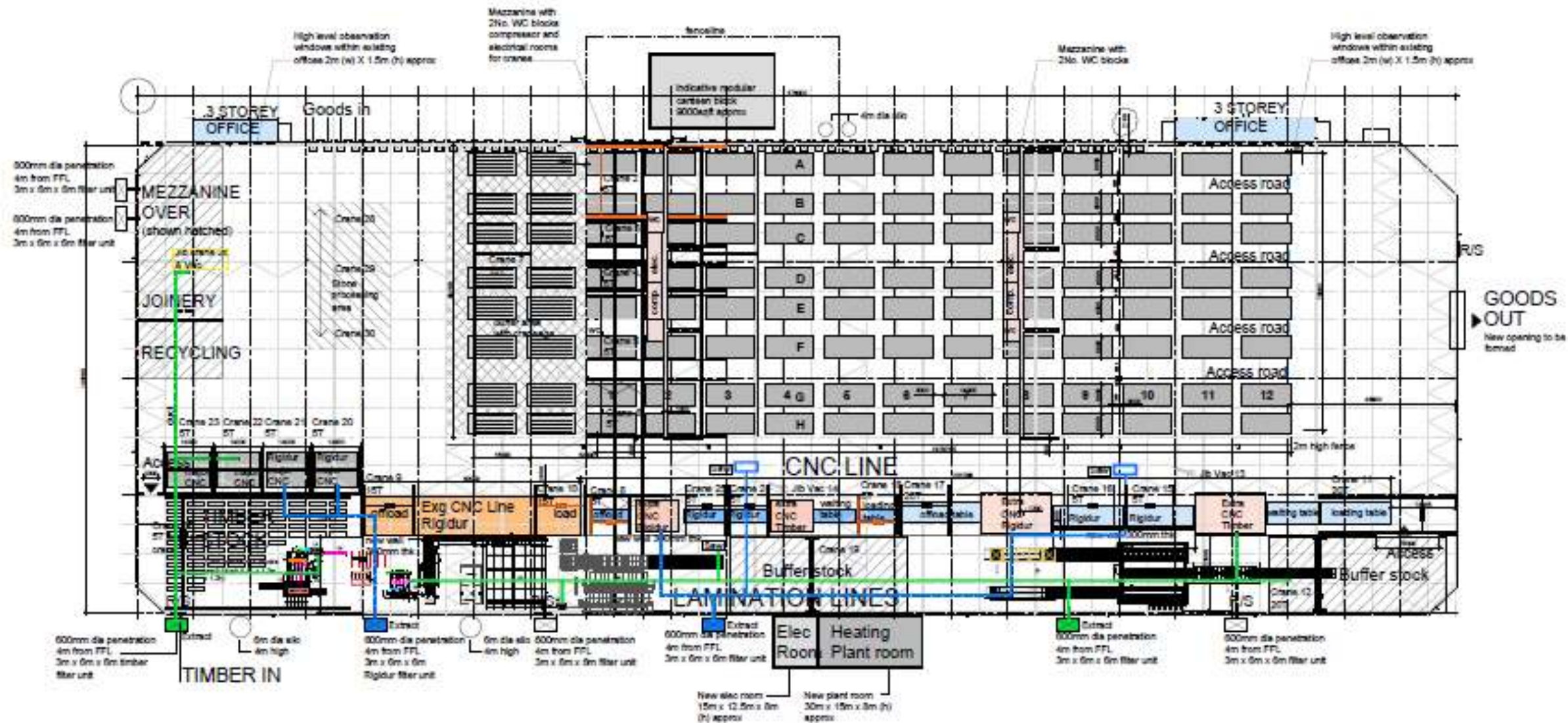
PROJECT FILE

REVISIONS

PROJECT FILE

REVISIONS





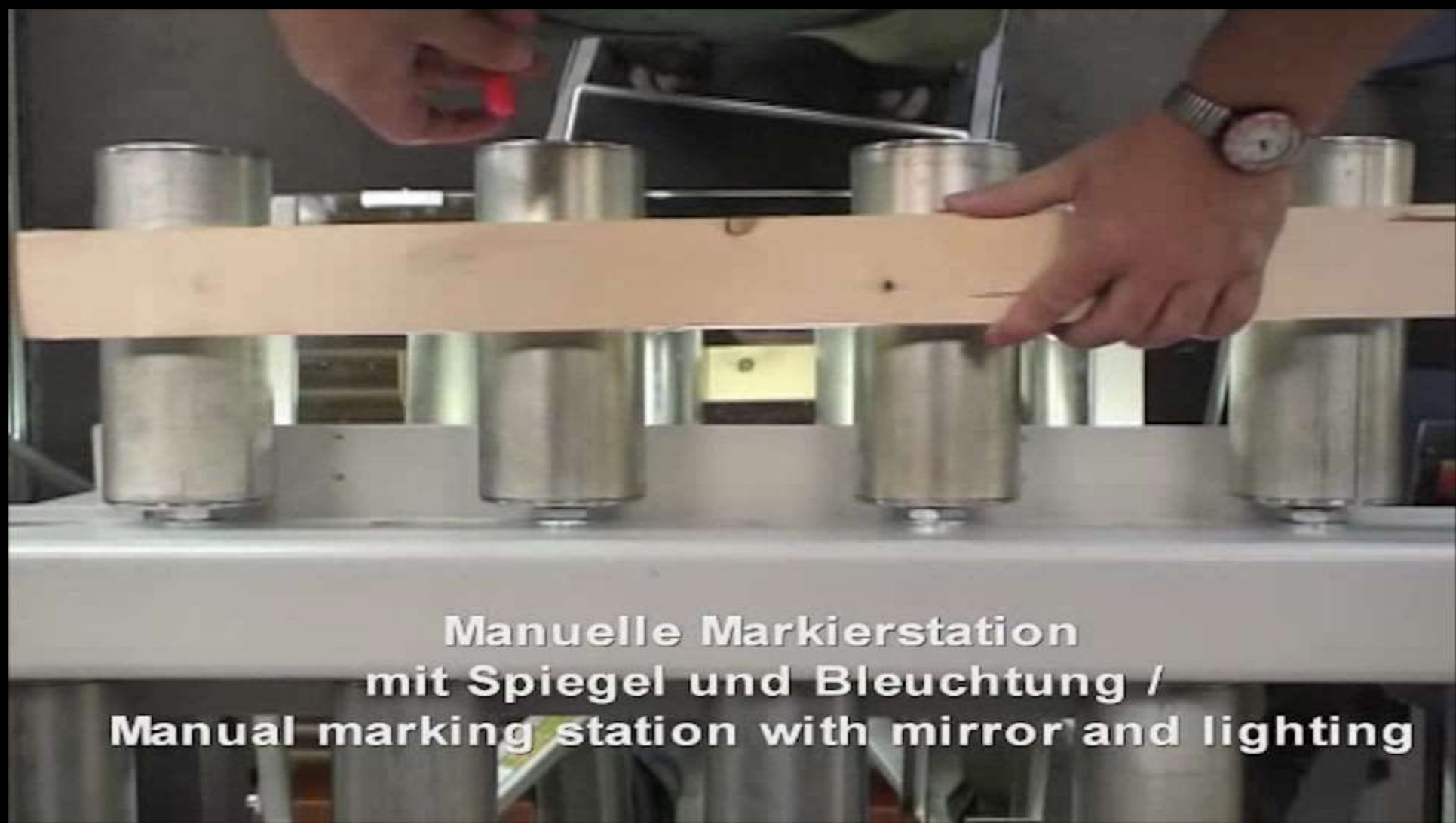
Cross Laminated Timber











**Manuelle Markierstation
mit Spiegel und Bleuchtung /
Manual marking station with mirror and lighting**

















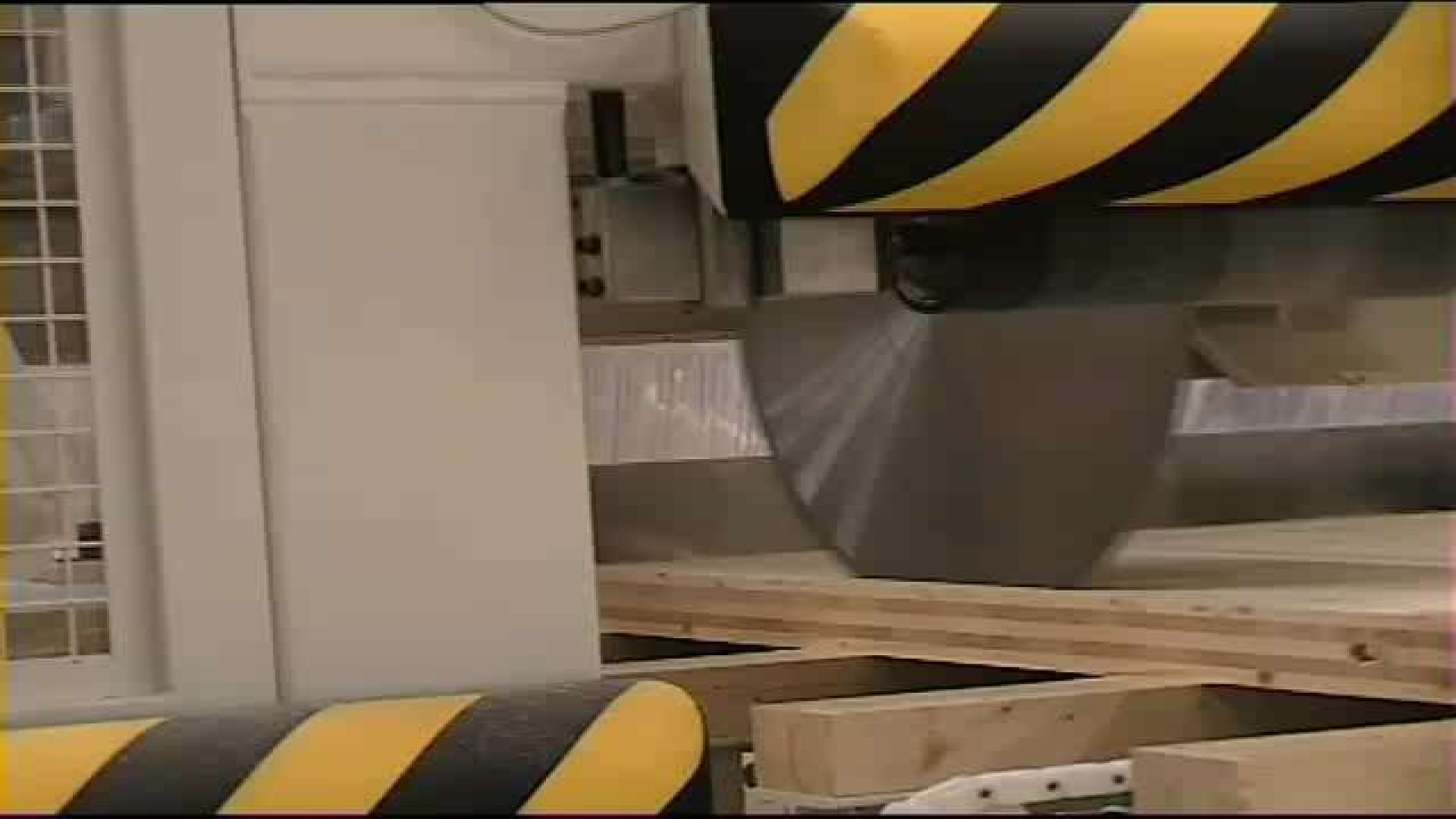


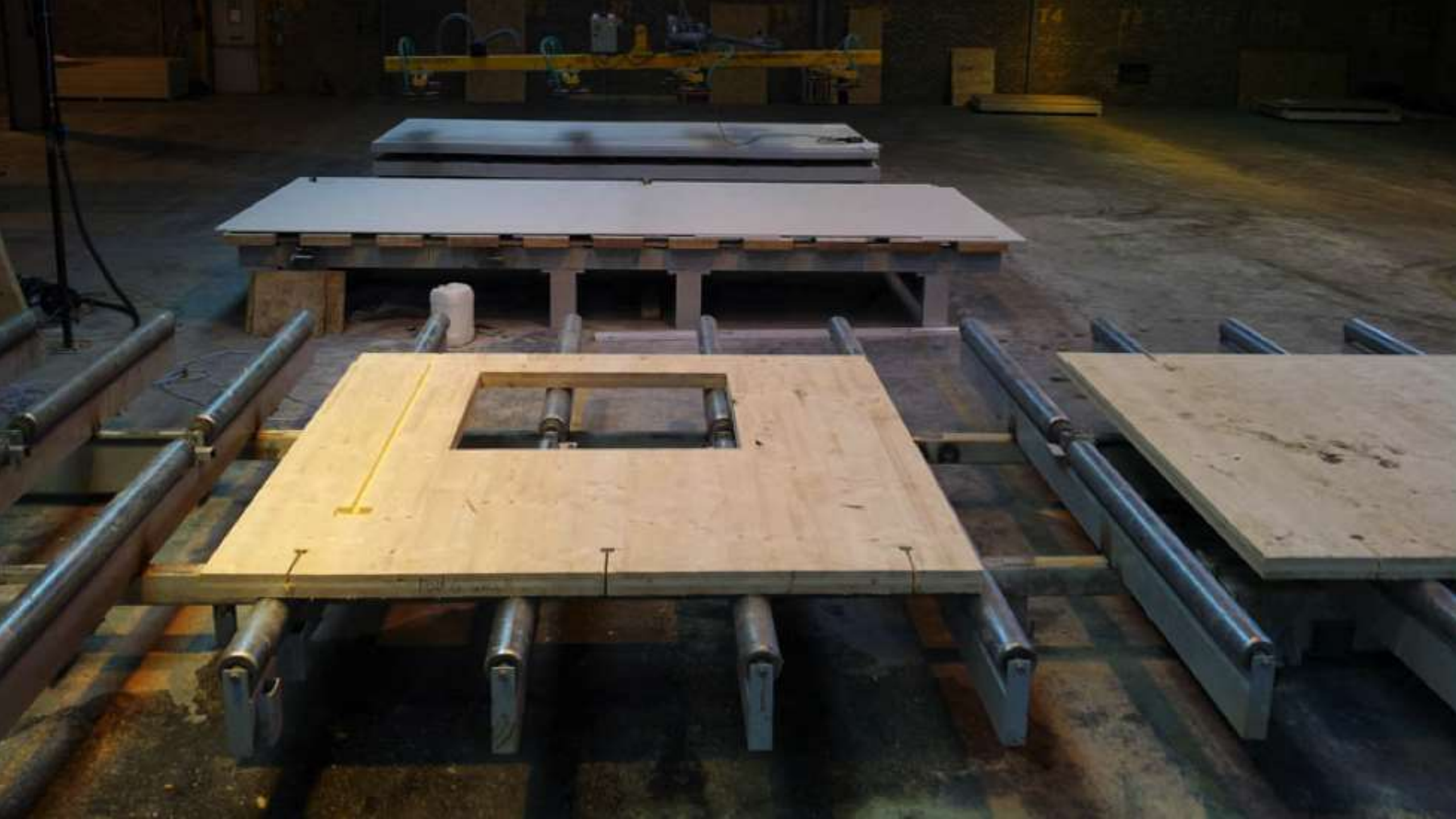






Precision Engineered Panels







BOXWORKS

TURBO VACUUMENTATION

SWL 375008

FS 6 VML F



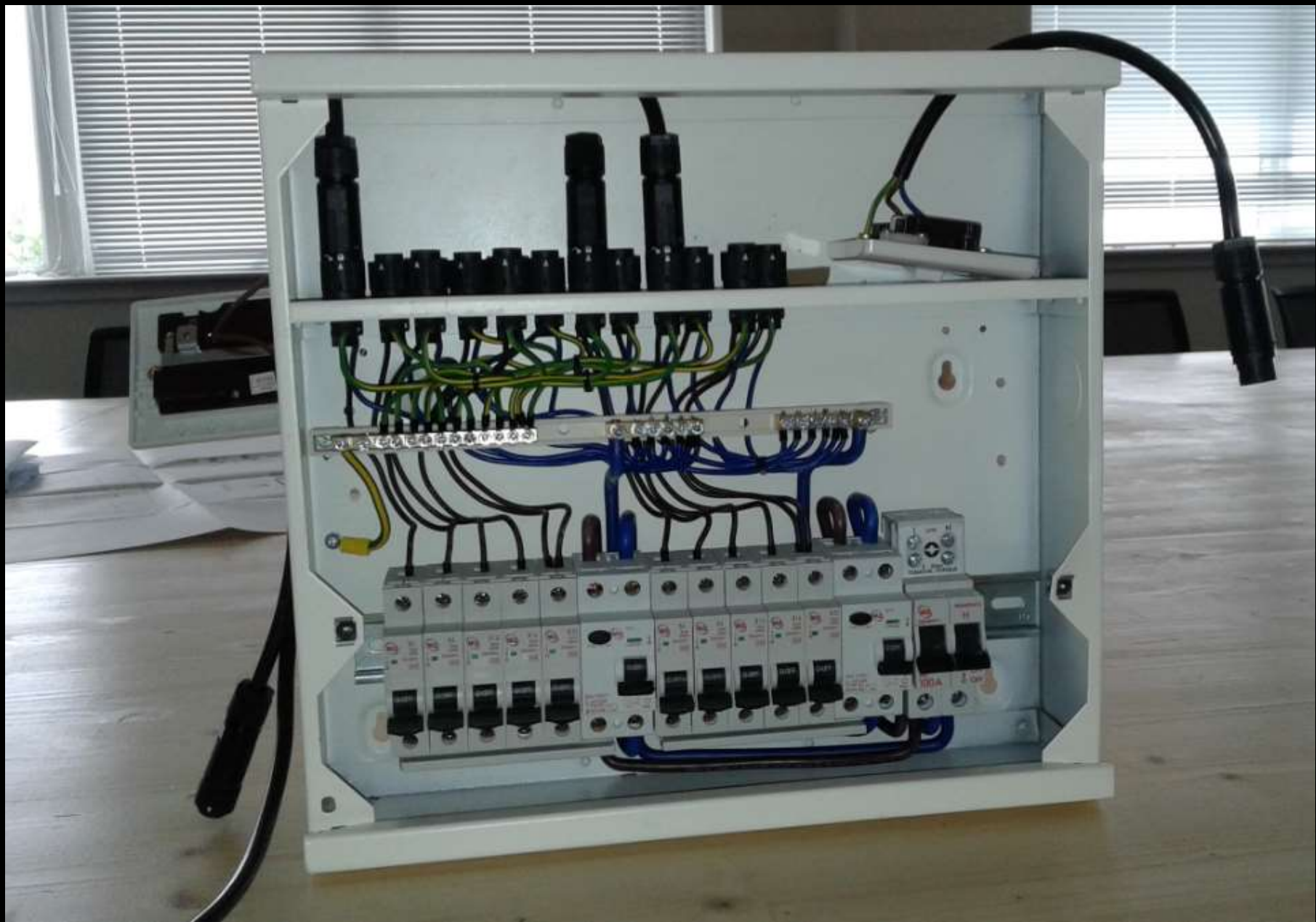


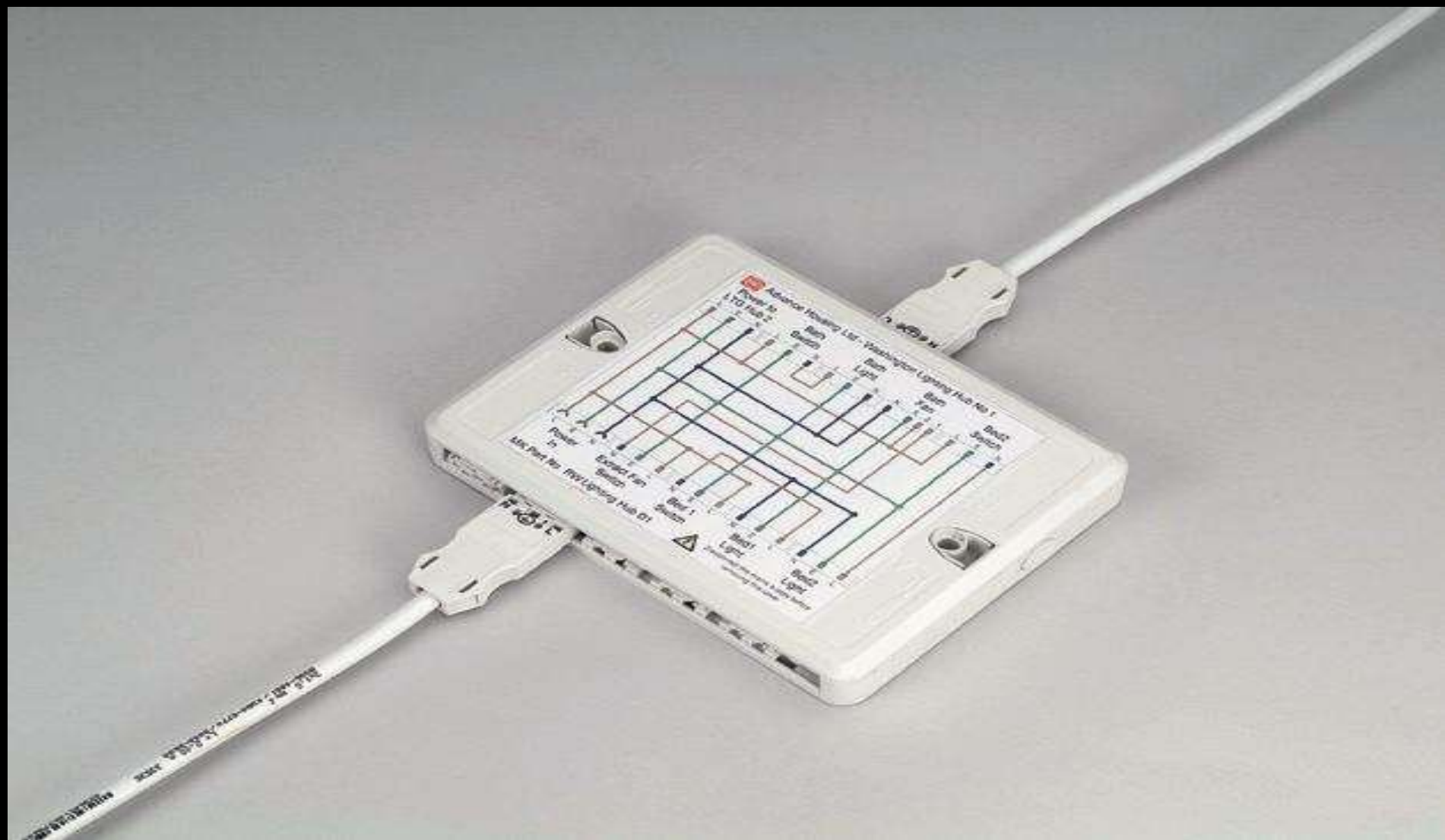


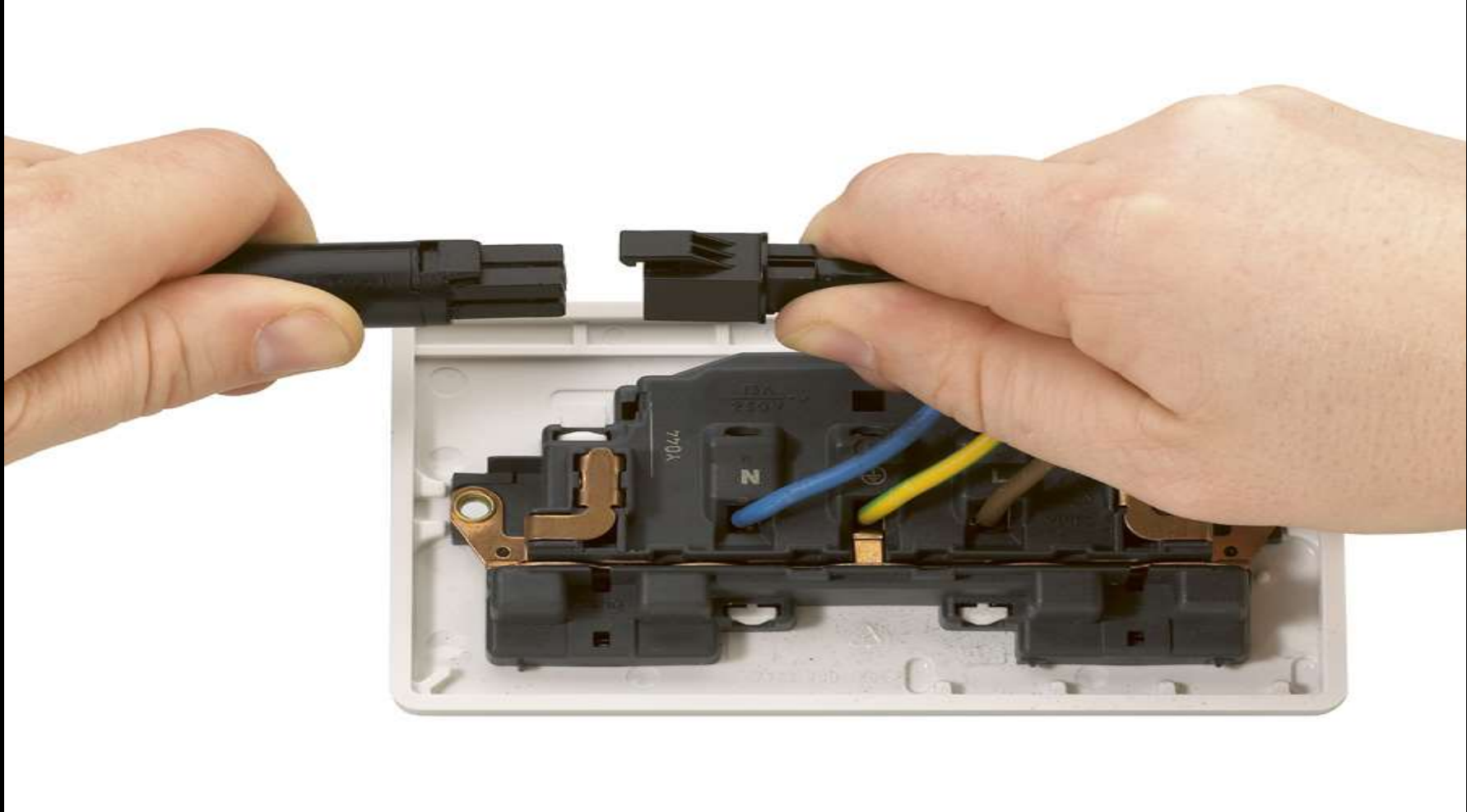


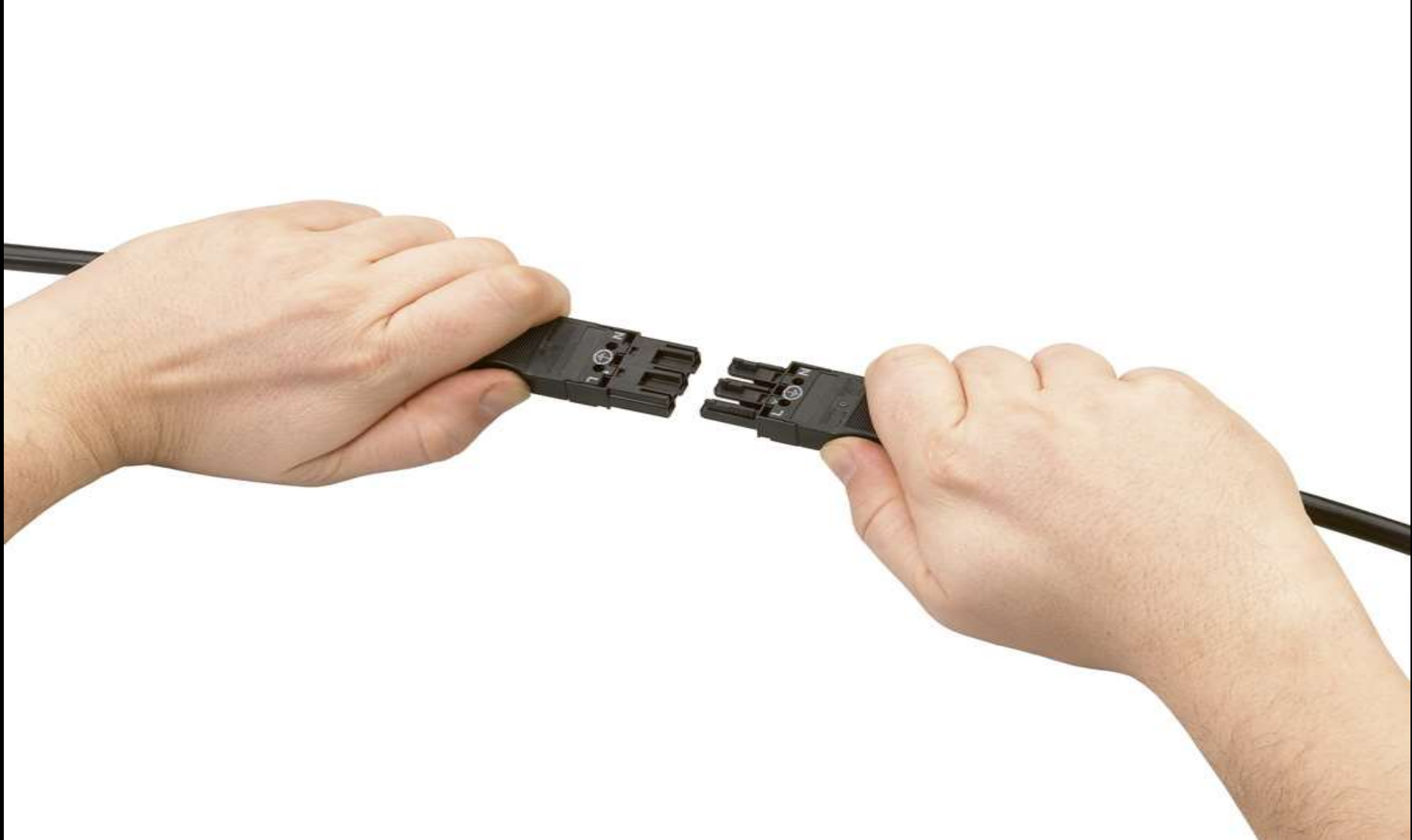


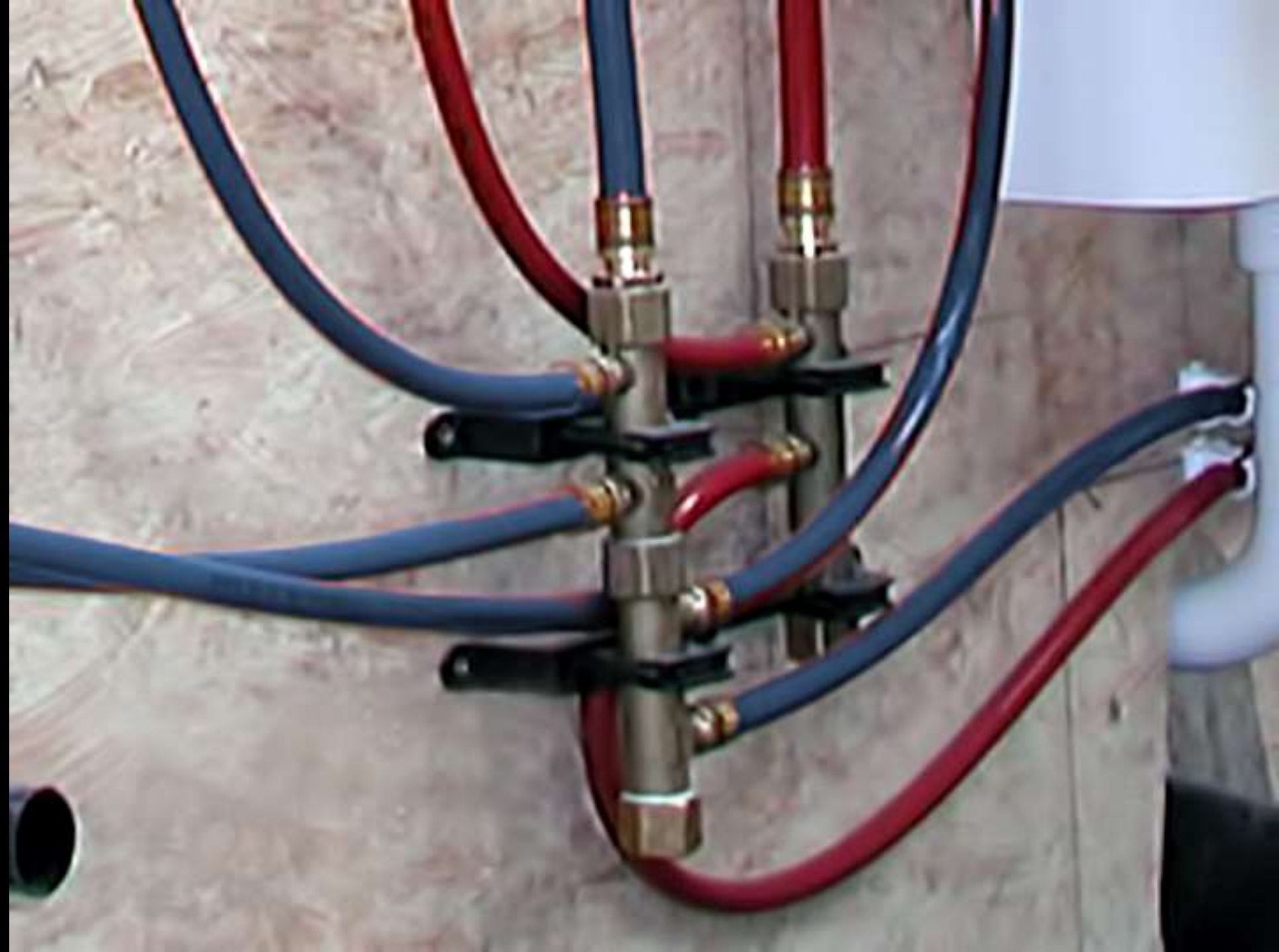












Volumetric Assembly





L&G
Homes









Conclusion

UK Market Gap – new homes

UK current annual requirement	260,000+
UK current capacity for building	130,000
Annual shortfall	130,000+ new homes

Top 4 UK house builders by volume 2014:

- *Barratts* 13,600
- *TaylorWimpey* 11,700
- *Persimmon* 11,500
- *Bellway* 5,600

Market opportunity – other sectors

- Student accommodation
- Private Rented Sector
- Hotels
- Care Homes
- Extra Care Homes
- Retirement Homes

L&G Homes

