
BURO HAPPOLD



CESW Climate Crisis

Annual Summit Theme Group Update

Imogen Snell

8th November 2022

AGENDA

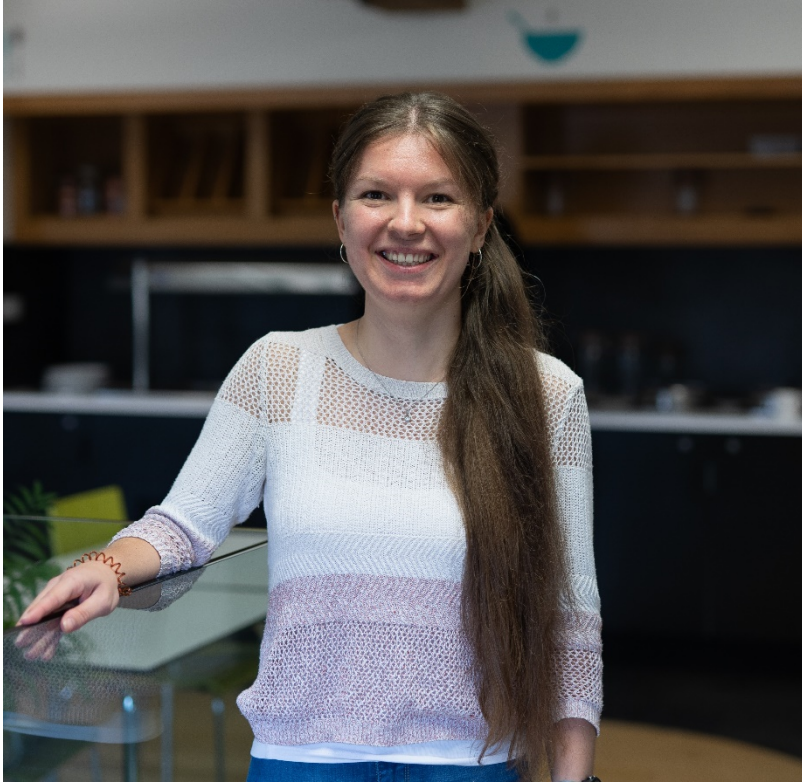
Introduction

Our Purpose

- Encouraging Collaboration
- Enable Sustainability
- Resilient Future

INTRODUCTION

Handover

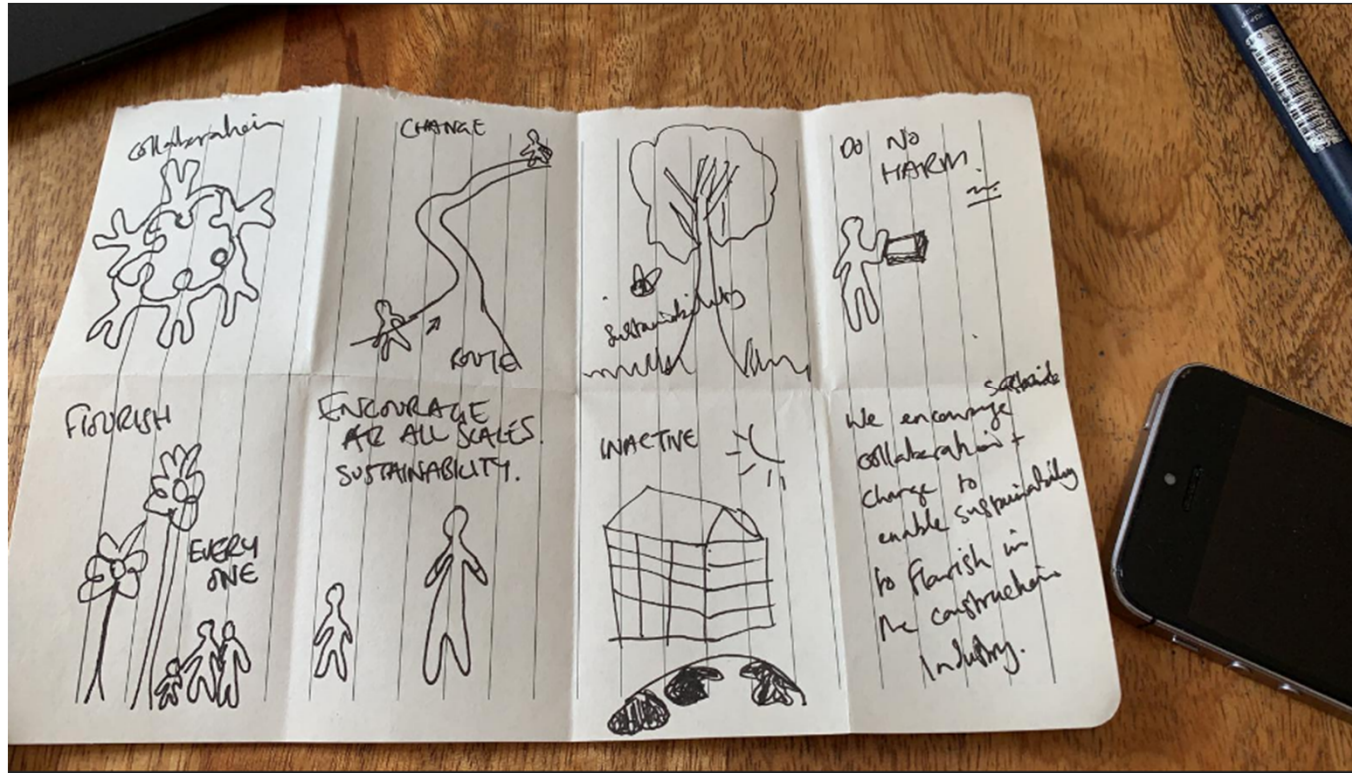


Imogen Snell

- Sustainability and Physics group at Buro Happold
- Key interests and role at work – energy, comfort and decarbonisation

OUR PURPOSE

OUR PURPOSE



To encourage collaboration to influence and enable sustainability & innovation to build a resilient future in the South West and beyond.

Constructing Excellence Sustainability & Innovation Forum

House Rules.

Purpose: We encourage collaboration to influence and enable sustainability & innovation to build a resilient future in the South West and beyond.

This document must be reviewed every 12 months with specific input from new members.

Current global situation: (i.e. any news updates that affect people or projects or planet - pandemic, BREXIT, COP26)

1. Chatham House Rules
2. Lead action person must produce a meeting summary.
3. We meet virtually 3 out of 4 meetings
4. Our in-person meeting must be in an accessible location
5. We are transparent.
6. We find process for each project and report updates every meeting
7. New Initiatives of interest will be discussed at each meeting
8. Knowledge sharing will be promoted throughout the group



| Question | Thoughts/Notes |
|--------------------------------------|---|
| How will you communicate as a group? | <p>A balance between face to face, online (Zoom etc.) and services such as WhatsApp/Linked in.</p> <p>What is the right balance? Importance of social side of face to face (lunch, networking, etc.)</p> <p>Difficult to communicate through emails, things get lost. Email update once a quarter for actions only. Explore sharing document system - google docs or linked in group.</p> <p>Suggestions: Each project lead feeds into someone from the forum to send a total update each quarter. Smaller projects communicate together and decide what they will use, perhaps depending what's available to their organisations.</p> |

| | |
|---|---|
| What will you be famous for? | <p>Our collaboration. How we engage with clients to ensure they understand the benefits. Our transparency.</p> <p>Deliverables - look at what is out there and not duplicate. Look for gaps and fill them with new initiatives that will improve the industry and promote groups and papers that are leading the way.</p> <p>Have South West continue to be at the forefront of innovation.</p> |
| How will you share your work with others? | <p>CESW routes - collaborate with the SW forums and wider CE groups. Understand where there are interest and project crossovers. Client theme group, wellbeing, procurement, smart construction.</p> <p>Project reports and progress maps to share with wider groups, can also be utilised by stakeholders.</p> <p>Use network of clubs, regions. We benefit from a good cross section of members from across the industry. Have direct link into CLC. Website, newsletters, conferences, seminars.</p> |
| How will you make yourselves/each other accountable? | <p>Setting clear actions each meeting and ensure that they are carried out. Deadlines respected and met. Project KPIs. Plan of actions, simple things, actions. Coaching/buddy system.</p> |
| How will the group still be engaged in a <u>years time</u> ? | <p>Regular main group meetings (<u>see</u> communicate and other rules). Motivated by having tangible deliverables and progress against key milestones. Realistic meeting dates and times, understanding of available resources.</p> <p><i>What else motivates you? Going for awards, totalisers of carbon saved, what do you want to celebrate?</i></p> |
| How will you support each other in event of burnout? | <p>Prevention better than cure. Have an open forum to discuss some of the challenges we are going through before they progress.</p> <p>Understanding and being aware of each other, buddy system to check in on projects. Keep tasks small and <u>manageable</u>.</p> |
| Any rules of the forum you'd like to see added. | <p>1 in 4 meetings in person, links into communication, good planning essential for face to face meetings, location that is on public transport routes for accessibility. Zooms meetings also provide accessibility.</p> |
| Any other adjectives that you want to adhere to - <u>g</u> diverse, use of tools like 'yes, and', supportive... | <p>Disruptive, influential, collaborative, energising, enthusiastic, open, considerate, realistic, balanced.</p> |

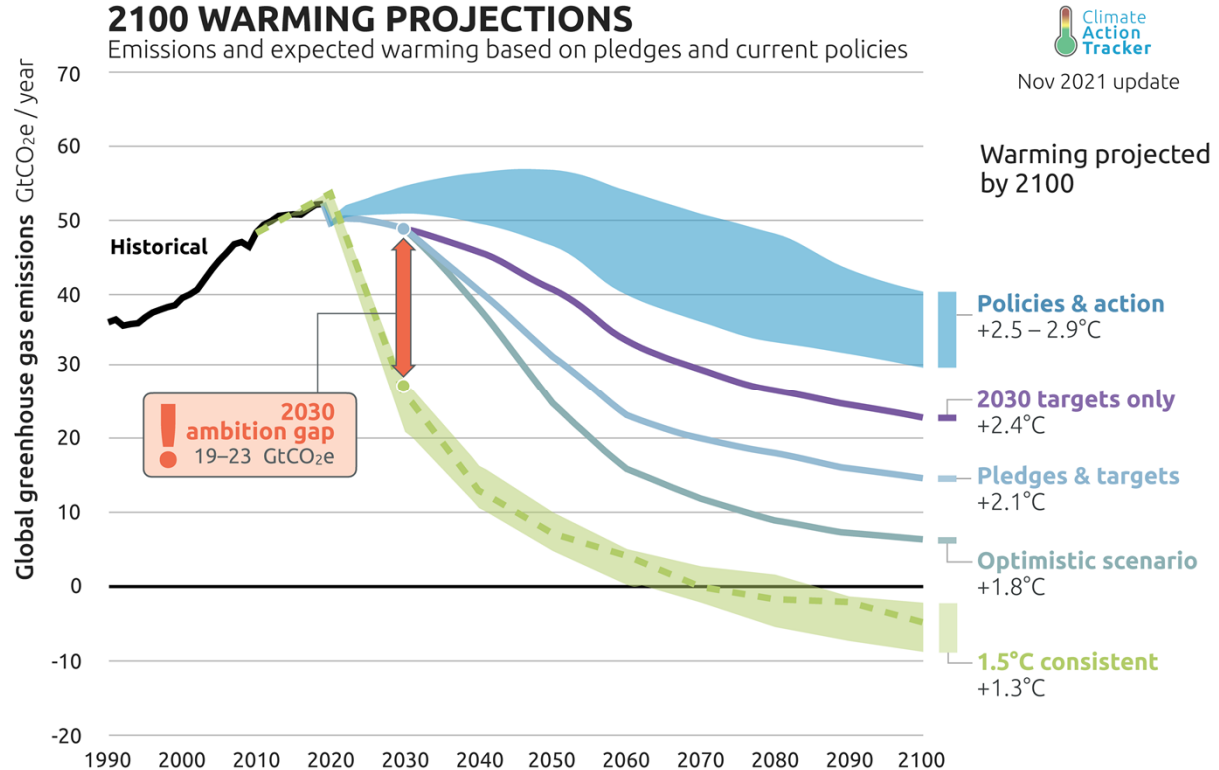
The Challenge

‘It is **unequivocal** that **human influence** has **warmed** the atmosphere, ocean and land. **Widespread** and **rapid changes** in the **atmosphere**, ocean, cryosphere and biosphere have **occurred**.’

IPCC, 2021

2100 WARMING PROJECTIONS

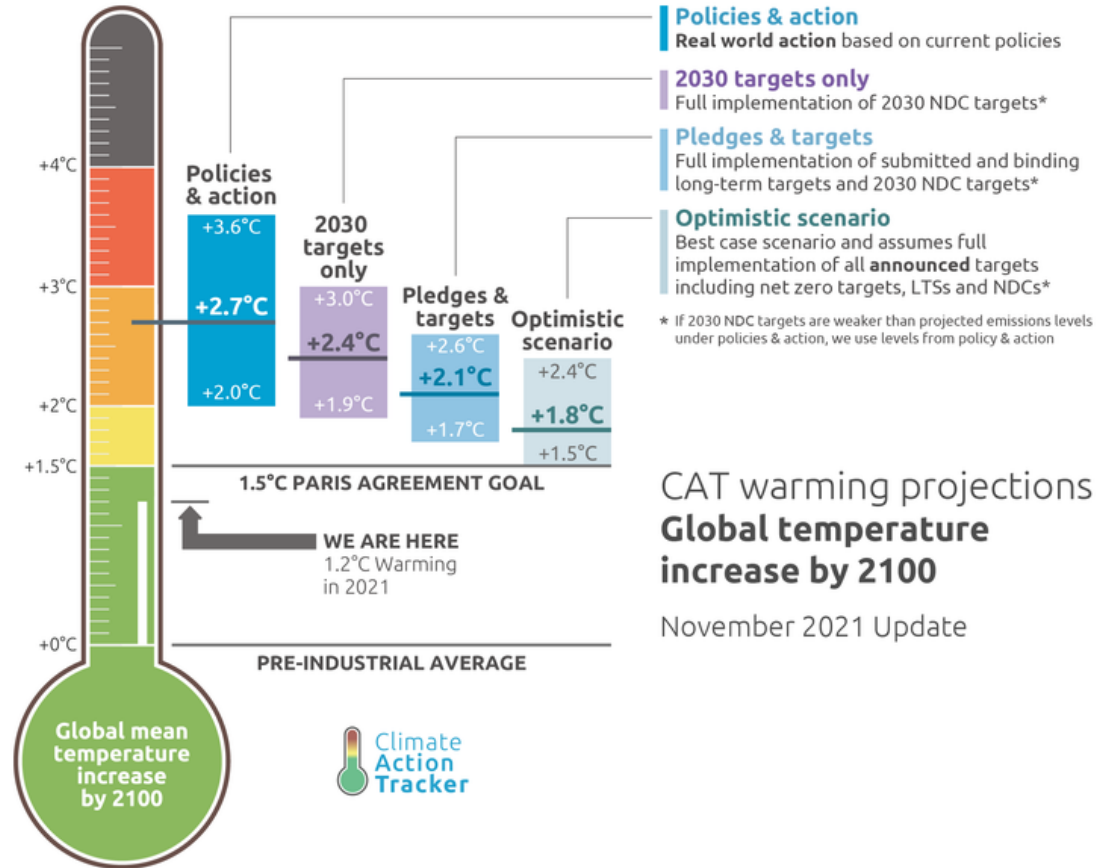
Emissions and expected warming based on pledges and current policies



The Challenge

‘It is **unequivocal** that **human influence** has **warmed** the atmosphere, ocean and land. **Widespread** and **rapid changes** in the **atmosphere**, ocean, cryosphere and biosphere have **occurred**.’

IPCC, 2021



CAT warming projections
Global temperature increase by 2100

November 2021 Update

Encourage collaboration



About | Membership | Clubs

Theme Groups

Events | News | Awards | Dipl

A screenshot of the Constructing Excellence South West website. The navigation bar is dark blue with white text. Below the navigation bar is a grid of five colored boxes representing theme groups: Future Skills (orange), Smart Construction (teal), Climate Crisis (green), and Building Safety (yellow). A purple bar at the bottom of the grid contains the text "Equality, Diversity and Inclusion". The background of the page shows a construction site with a large building under construction.

Future Skills

Smart Construction

Climate Crisis

Building Safety

Equality, Diversity and Inclusion

Influence and enable sustainability

IT'S TIME TO CREATE A
LIVING FUTURE
AND A WORLD OF
LIVING BUILDINGS

INTERNATIONAL
LIVING FUTURE



What are Scope 3 emissions

The Green House Gas Protocol Corporate standards categorises emissions into three scopes. Scope 1 are **direct emissions** from controlled sources such as gas and owned vehicles. Scope 2 emissions are **indirect emissions** such as electricity and Scope 3 emissions are **all indirect emissions** that occur in the **value chain of the reporting**.

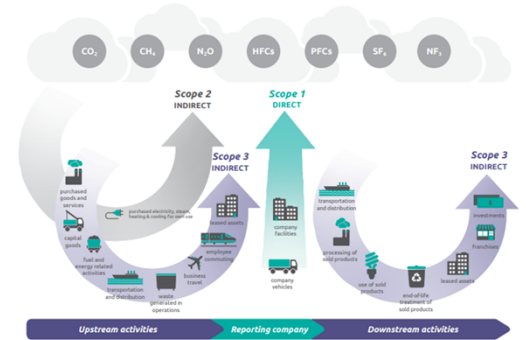


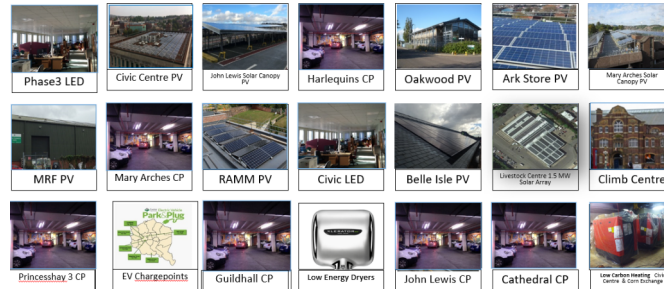
Image: GHG Protocol – Scope 3 Standard

Embodied Carbon – The issue and the drive towards consistent, accessible & credible assessment and reporting

Tom Scott



Project Net Zero - Over 22 Projects Delivered

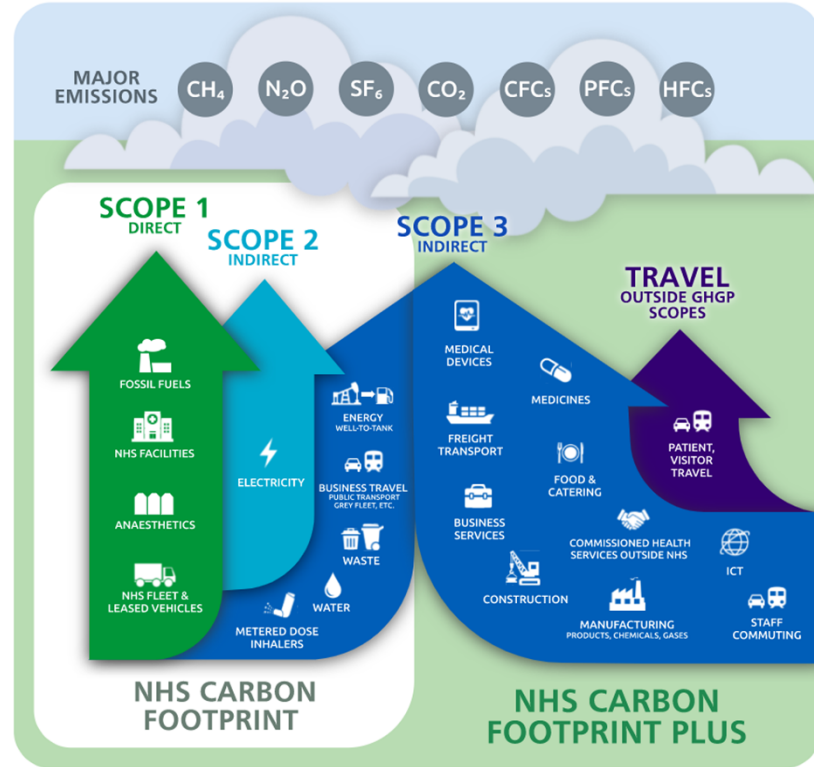


Resilient future



**THE VALUE OF
URBAN NATURE-BASED
SOLUTIONS**

MAY 2022



BURO HAPPOLD

JUMP ON BOARD!

We'd love to hear from you

Imogen Snell
imogen.snell@burohappold.com

www.burohappold.com