

PARTNERSHIPS IN ACTION



GREEN CONSTRUCTION ADVISORY PANEL

GREEN SKILLS DEVELOPED IN PARTNERSHIP WITH GCAP

CONTACT US ON THE GREEN SKILLS HOTLINE

 **01932 400996**



 www.fscexeter.com/green-skills-courses/

 gcap@exe-coll.ac.uk



INTRODUCTION

Formed in January 2022, GCAP was a direct response to the green skills agenda and the national drive towards net zero. Key partners from across the South West were invited to the Future Skills Centre (FSC) to take action on key topics facing industry and how cross sector collaboration can pave the way to a solution focused approach.

The phrase, 'You Said, We Did' was launched to indicate the group's intentions action based approach to closing the skills gap across the South West and more latterly, across the UK.

Mission

To shape skills, training and education for the current and future construction workforce.

Vision

To be a proactive community of construction businesses working together to close the skills gap across the South West.

Values

- Innovation
- Excellence
- Collaboration and Partnership

GCAP's call to action has inspired a bespoke Retrofit Skills Centre purely designed to deliver green skills and act as a leading hub in the South West to upskill the existing workforce and entice new entrants into the sector. To complement the centre, GCAP in partnership with Exeter College is delighted to announce a green curriculum based on in demand training and skills.



01ST FEBRUARY 2024



08:00 - 14:00



FUTURE SKILLS CENTRE, EXETER AIRPORT
INDUSTRIAL ESTATE, EXETER, EX5 2LJ

HEADLINE SPONSOR

- Recognition as a major sponsor of the Conference, with priority branding
- Logo included in bespoke on-site event collateral including on-site Conference Program, event signage, and walk-in/-out slide loop at Conference opening and closing sessions
- Provision of large exhibition stands in priority position
- Promotion via social media outlets, including Facebook and Twitter
- Logo and coverage of sponsor's Conference involvement (e.g. speaker contribution) to be included in the post-conference report to be promoted nationally after the event

£500

EXHIBITORS

- Stand space to showcase your products
- Exhibitor profile in the programme
- Tickets to the event
- Exhibitor profiles
- Branding and media coverage

£200

SPONSORSHIP

We offer a number of sponsorship options including the drinks reception, lunch sponsor and post-event content. Including the following benefits:

- Promotion across social media
- Logo included in the programme
- Branding in designated sponsorship area

£100

TO REGISTER YOUR INTEREST, PLEASE CONTACT
GCAP@EXE-COLL.AC.UK
01392 400996

GREEN SKILLS COURSES

GCAP SPONSORSHIP

GCAP has attracted over 150 people and 80+ businesses since its formation in January 2022. GCAP has gone from strength to strength and is now recognised nationally for its work to close the skills gap across the Construction and Housing sector.

For event sponsors, this is a unique opportunity to connect with like-minded individuals and business professionals.

GCAP is committed to:

- INFLUENCING THE REGIONS APPROACH TO SUSTAINABLE EDUCATION AND SKILLS
- CO-DESIGN CURRICULUM WITH INDUSTRY PROFESSIONALS
- CREATING INNOVATIVE RESOURCES THAT ARE AVAILABLE TO ALL
- CREATE A POSITIVE IMPACT ACROSS THE SOUTH WEST THROUGH SUPPORTED ALIGNED INITIATIVES AND PROMOTION OF OUR WORK
- CREATING LINE OF SIGHT OF GREEN CONSTRUCTION JOB OPPORTUNITIES TO THE REGION'S WORKFORCE
- INFLUENCING THE REGIONS APPROACH TO SUSTAINABLE EDUCATION AND SKILLS
- ACTIVELY ENGAGE WITH SCHOOLS, COLLEGES AND THE COMMUNITY TO RAISE AWARENESS OF THE GREEN SKILLS AGENDA

Attendee Profile

GCAP is a member led committee of local, regional and National building services, housing and construction businesses supported by local authorities, charities and training providers across the South West. We exist to encourage, improve develop and enable sustainability and net zero training, development and education opportunities for the housing and construction industry. Our purpose is to close the skills gap across the country and provide entry routes into green careers. Our ambition is to educate the current and future workforce to adapt to emerging technologies, consider the environmental impact and how industry can meet net zero targets.

CIRCULAR ECONOMY

GCAP IS A NOT-FOR-PROFIT MEMBERSHIP GROUP WITH A MISSION TO SHAPE SKILLS, TRAINING AND EDUCATION FOR THE CURRENT AND FUTURE CONSTRUCTION WORKFORCE. GCAP IS A PROACTIVE COMMUNITY OF CROSS-SECTOR BUSINESS AND INDIVIDUALS COLLABORATIVELY WORKING TOGETHER TO CLOSE THE NET ZERO SKILLS GAP. ALL MONEY RAISED IS RINGFENCED TO DEVELOP THE SKILLS, TRAINING AND EDUCATION FOR THE CURRENT AND FUTURE CONSTRUCTION WORKFORCE.

LEVEL 2	Floor Insulation	1 DAY
LEVEL 2	Loft Insulation	1 DAY
LEVEL 2	Draft Proofing	1 DAY
LEVEL 3	External Wall Insulation	3 DAYS
LEVEL 3	Internal Wall Insulation	3 DAYS
CPD	Introduction to Retrofit	1 DAY
LEVEL 2	Understanding Retrofit	1 DAY
LEVEL 2	Understanding Damp and Mould	1 DAY
LEVEL 3	Energy Efficiency Measures	3 DAYS
LEVEL 4	Retrofit Assessor	3 DAYS
LEVEL 5	Retrofit Coordinator	15 DAYS

Exeter College Insulation Installation Factsheet

LEVEL 2 FLOOR INSULATION LEVEL 2 LOFT INSULATION LEVEL 2 DRAFT PROOFING

AIMED AT:
Existing workforce who are experienced in the installation of Floor Insulation, Loft Insulation or Draft Proofing

ENTRY CRITERIA:
You must be employed or self-employed and:

- In a trade currently installing Floor insulation, Loft insulation or Draft Proofing

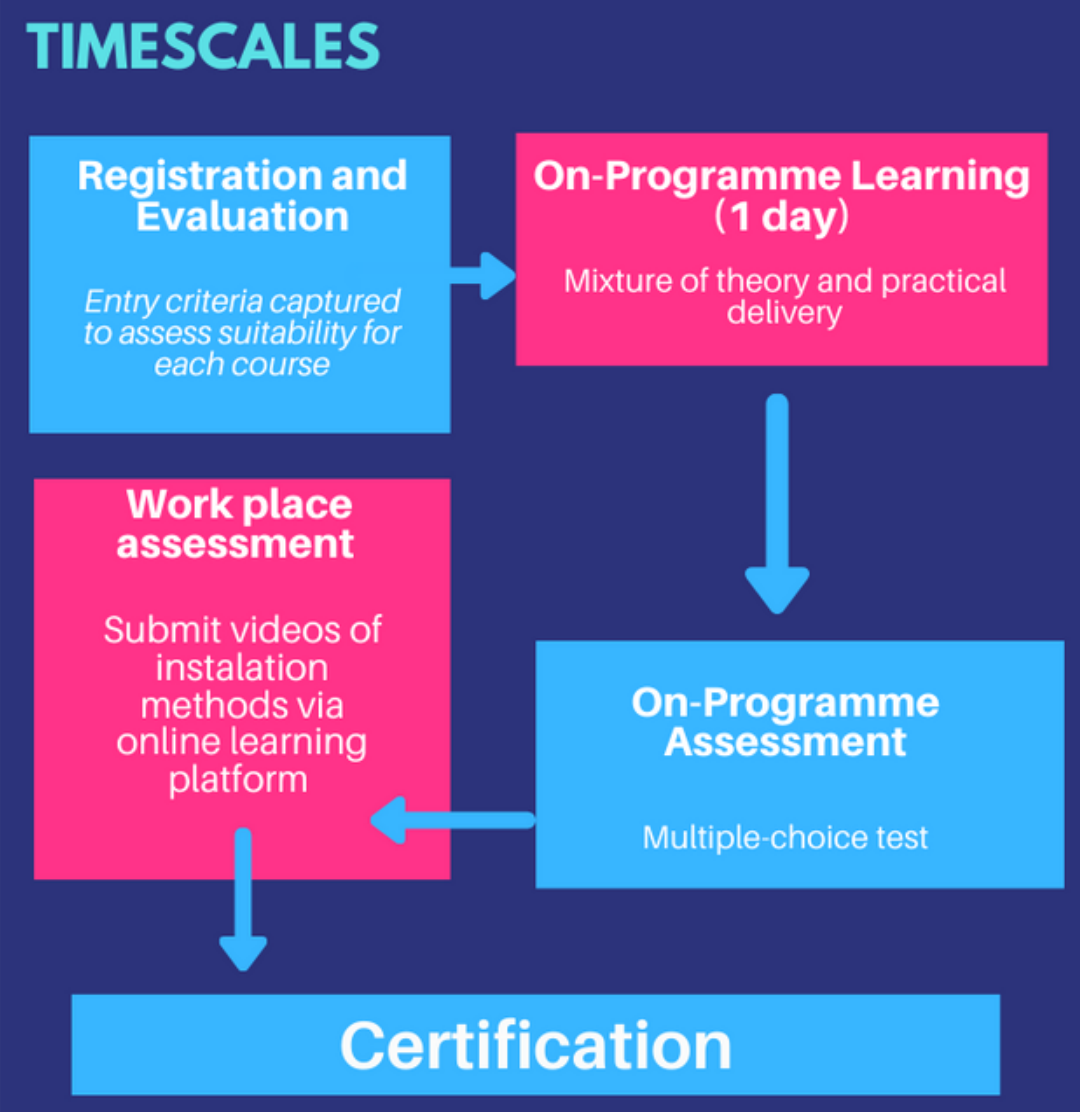
- TOPICS COVERED:**
- Installation of Floor insulation, Loft insulation or draft Proofing measures
 - Health and Safety
 - Ventilation
 - PAS 2030/35

ASSESSMENT
A summative assessment observed by a qualified Green Skills Tutor once all on-programme elements have been completed. The assessment methods for Floor insulation, Loft insulation and Draft Proofing includes:

- On programme observation
- Practical Assessment in the workplace
- Multiple choice test

- ACHIEVE**
- Certificate in Competence for the Installation of Floor Insulation in the Workplace (existing installers)
 - Certificate in Competence for the Installation of Loft Insulation in the Workplace (existing installers)
 - Certificate in Competence for the Installation of Draft Proofing in the Workplace (existing installers)

COSTS & FUNDING
Heavily discounted with funding from the Department for Energy, Security and Net Zero (DESNZ)



APPLY NOW

www.fsccexeter.com/green-skills-courses/

DEVELOPED IN PARTNERSHIP WITH

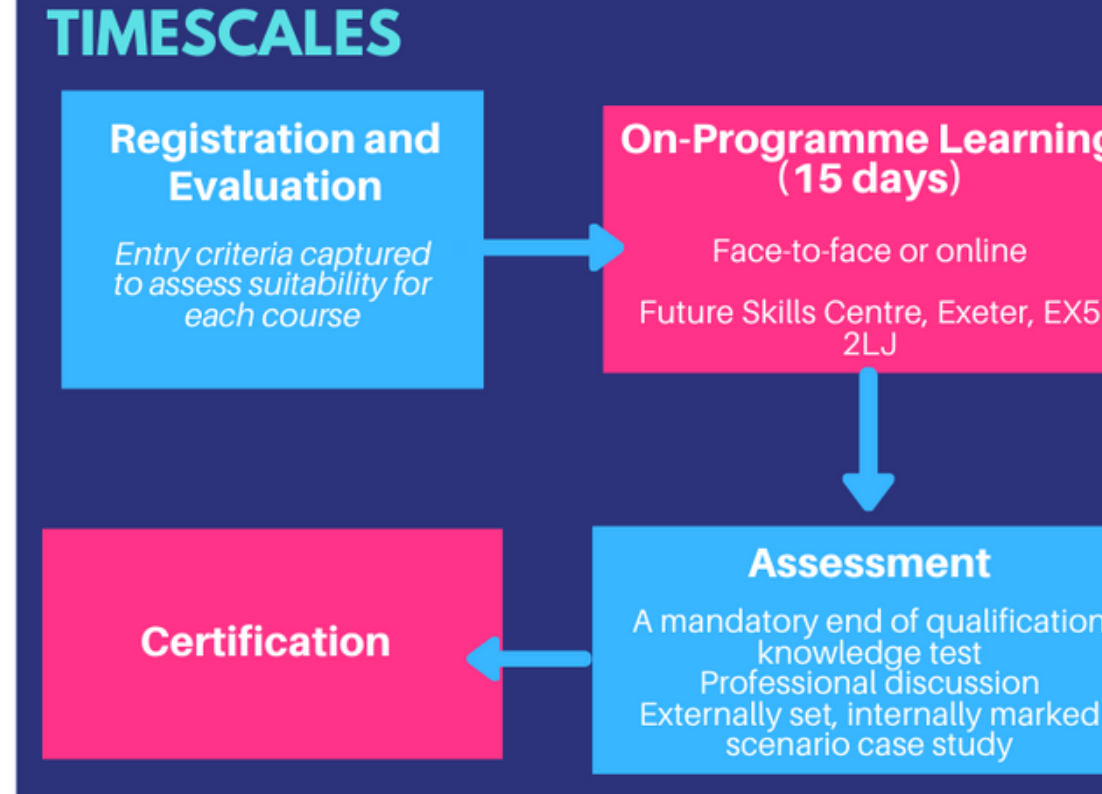
Exeter College Level 5 Retrofit Coordinator

LEVEL 5 RETROFIT COORDINATOR

AIMED AT:
Existing professionals already qualified in site/building project management of domestic retrofit projects, as well as providing a route for those already working in a retrofit capacity but lacking specific qualifications

- TOPICS COVERED:**
- PAS 2035
 - Assessing Dwellings
 - Quality Assurance and Risk Management
 - Building Physics - Managing Moisture Risk
 - Building Physics - Thermal Efficiency
 - Improving the Building Fabric - Floors and Roofs
 - Improving the Building Fabric - Walls and Windows
 - Improving the Building Services - Heating, Hot Water, Lighting and Power
 - Improving the Building Services - Renewable Energy Systems
 - Improving Airtightness and Ventilation
 - Improvement Option Evaluation and Medium-term Retrofit Plans
 - Post Retrofit Testing, Monitoring and Evaluation
 - Understand the requirements for lodgement of measures to TrustMark.

ENTRY CRITERIA:
Learners must hold a Level 4 or above qualification in a building-related subject such as architecture, surveying, engineering or construction site management, or a National Vocational Qualification (NVQ) at Level 3 or above and have minimum of 5 years' experience in a subject related to the management or supervision of construction and domestic construction projects.



ASSESSMENT
The qualification is assessed through a combination of a mandatory end of qualification knowledge test, professional discussion(s) and externally set, internally marked scenario case study.

ACHIEVE
NOCN_Cskills Awards Level 5 Diploma in Retrofit Coordination and Risk Management

COSTS & FUNDING
Heavily discounted with funding from the Department for Energy, Security and Net Zero (DESNZ)

APPLY NOW

fsccexeter.com/green-skills-courses/



Exeter College Level 3 Energy Efficiency Measures

LEVEL 3 ENERGY EFFICIENCY MEASURES

AIMED AT:
Existing retrofit professionals who are looking to take the next step in their career.

ENTRY CRITERIA:
Professionals who already have a background and experience in the construction industry.

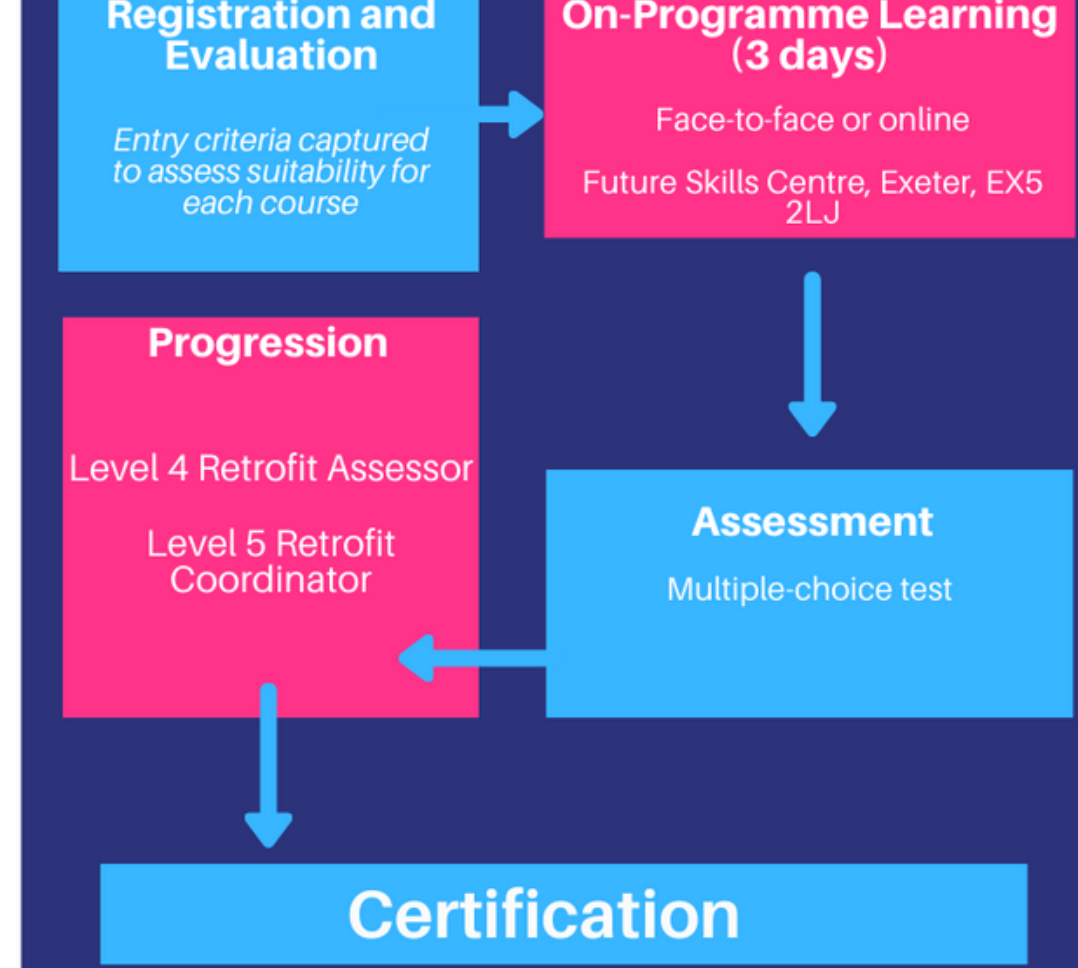
TOPICS COVERED:

- Recognising the Age, Nature and Characteristics of Older and Traditional Buildings
- Evaluating the Options for Introducing Energy Efficiency Measures
- Make Recommendations and Provide Advice on the Introduction of Energy Efficiency Measures

ASSESSMENT
Learners will be required to complete end of unit knowledge tests. The tests are externally set and marked and consist of multiple-choice questions. The tests are graded as Pass / Fail. The qualification is graded as Pass / Fail.

ACHIEVE

- NOCN Level 3 Award in Energy Efficiency Measures for Older and Traditional Buildings



COSTS & FUNDING
Heavily discounted with funding from the Department for Energy, Security and Net Zero (DESNZ)

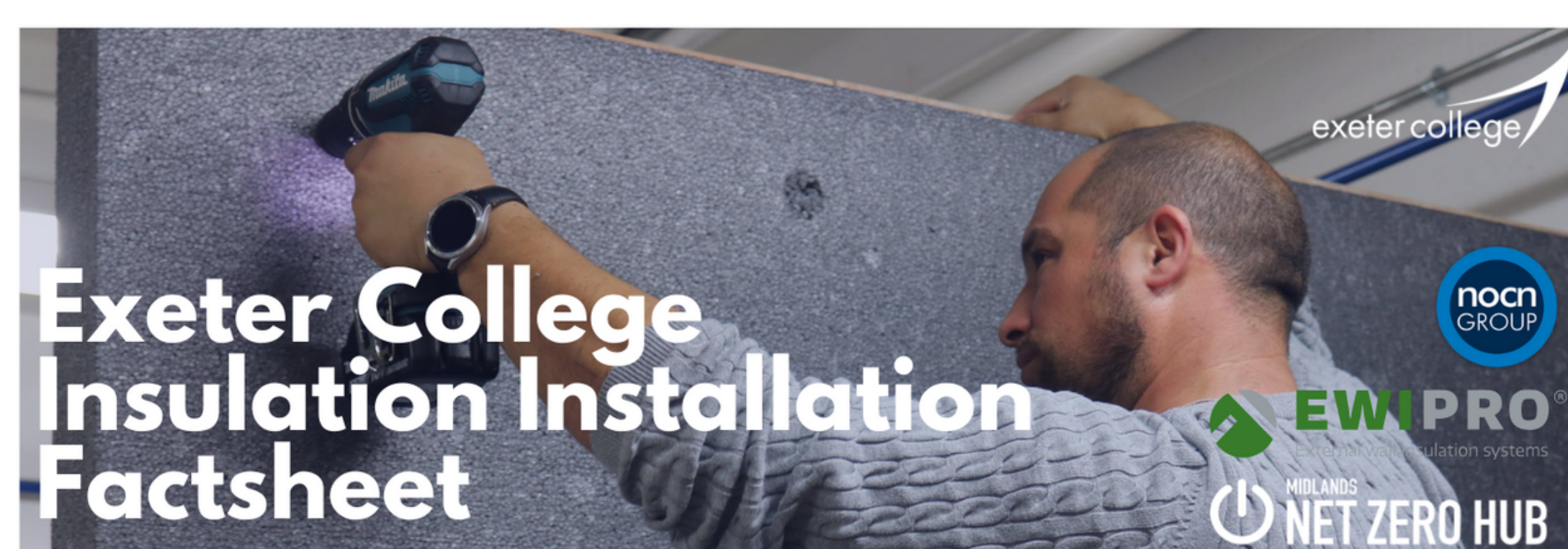
MIDLANDS NET ZERO HUB

APPLY NOW

www.fssexeter.com/green-skills-courses/

nocn GROUP

exeter college



Exeter College Insulation Installation Factsheet

LEVEL 3 EXTERNAL WALL INSULATION & LEVEL 3 INTERNAL WALL INSULATION

AIMED AT:
Existing workforce including plasterers, carpenters and other associated trades who are experienced in the installation of External Wall Insulation or Internal Wall Insulation.

ENTRY CRITERIA:
You must be employed or self-employed and in a trade currently installing EWI or IWI

TOPICS COVERED:

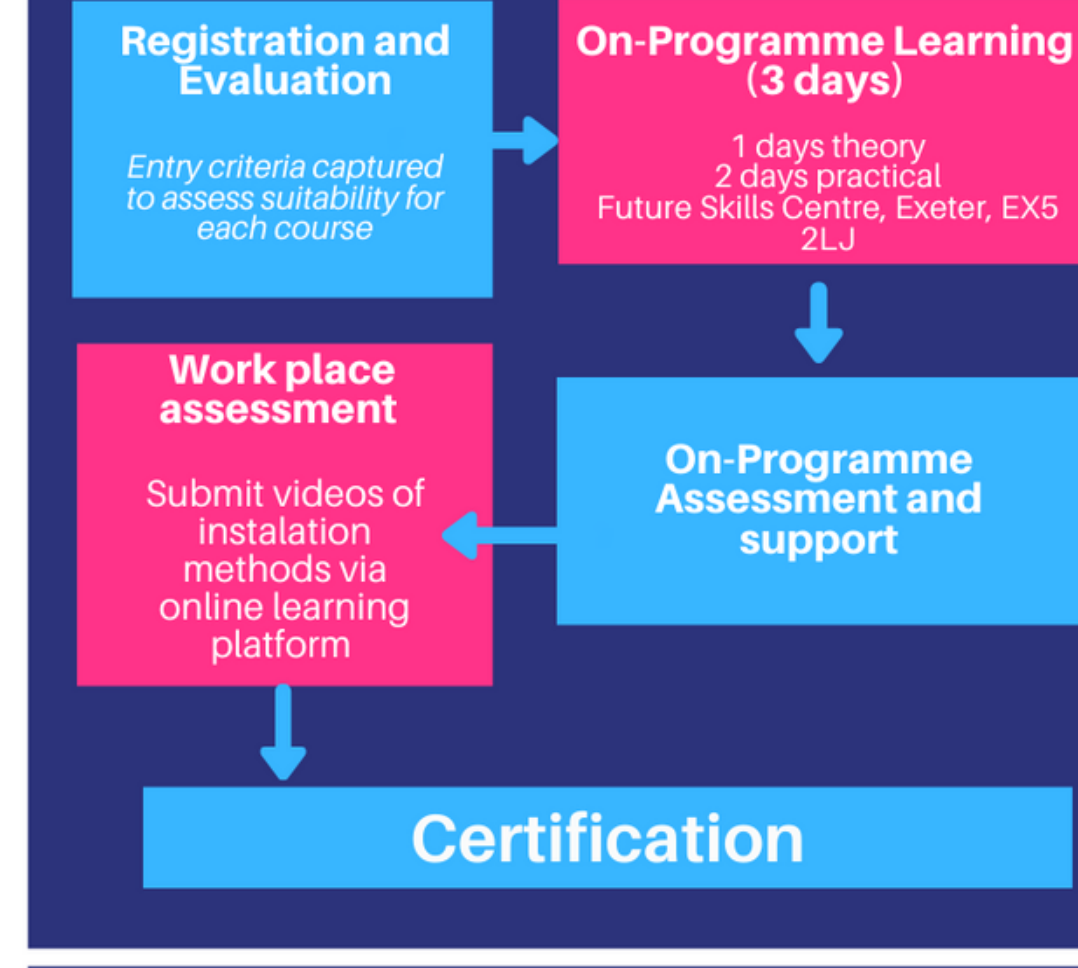
- Installation of EWI or IWI measures
- Health and Safety
- Ventilation
- PAS 2030/35

ASSESSMENT
A summative assessment observed by a qualified Green Skills Tutor once all on-programme elements have been completed. The assessment methods for EWI and IWI includes:

- ✓ On programme observation
- ✓ Practical Assessment in the workplace
- ✓ Multiple choice test

ACHIEVE

- Certificate in Competence for the Installation of External Wall Insulation in the Workplace (existing installers)
- Certificate in Competence for the Installation of Internal Wall Insulation in the Workplace (existing installers)



COSTS & FUNDING
Heavily discounted with funding from the Department for Energy, Security and Net Zero (DESNZ)

MIDLANDS NET ZERO HUB

DEVELOPED IN PARTNERSHIP WITH

INCA Insulated Render and Cladding Association

NATIONAL INSULATION ASSOCIATION

SWIGA Solid Wall Insulation Guarantee Agency

PJB CONSULTANCY SUPPORT FOR SUCCESS

APPLY NOW

www.fssexeter.com/green-skills-courses/

Exeter College Level 2 Understanding Domestic Retrofit

LEVEL 2 UNDERSTANDING DOMESTIC RETROFIT

AIMED AT:

This Level 2 qualification is primarily designed for learners who are aged 16 or older and who already have a background and experience in the construction industry or learners who are looking to move into this sector of the construction industry.

ENTRY CRITERIA:

There are no formal entry requirements for learners undertaking this qualification, however, experience in the construction industry would be a benefit.

TOPICS COVERED:

- Interpret domestic retrofit information specific to the work activities and resources
- Interpret health and safety information
- Identify the materials required for work activities in domestic retrofit
- Identify the risk of damage to the work and the surrounding area
- Understand the basic principles for domestic retrofit installations
- Understand how to carry out basic domestic retrofit installations

ASSESSMENT

This qualification is assessed via a multiple-choice examination.

ACHIEVE

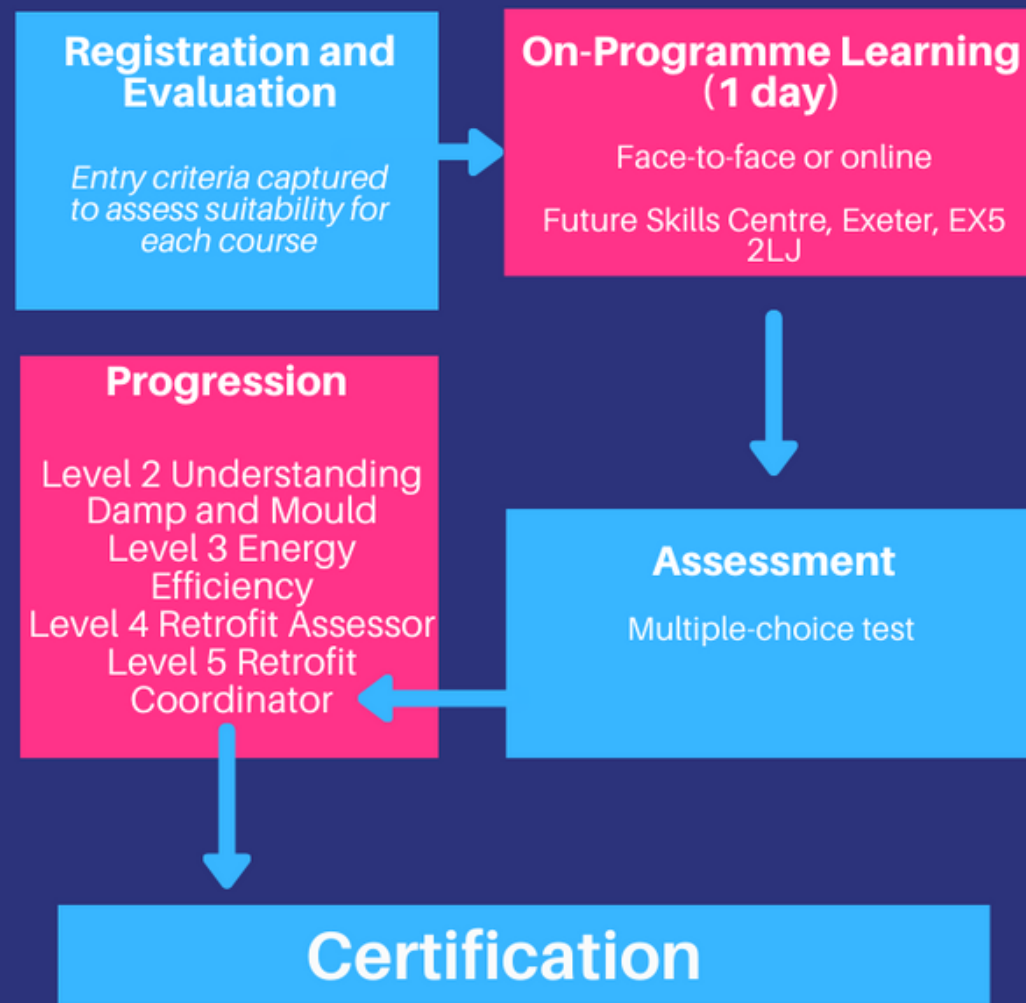
NOCN_Cskills Awards Level 2 Award in Understanding Domestic Retrofit

COSTS & FUNDING

Heavily discounted with funding from the Department for Energy, Security and Net Zero (DESNZ)



TIMESCALES



APPLY NOW



www.fssexeter.com/green-skills-courses/



exeter college

Exeter College Level 2 Understanding Damp and Mould in Domestic Dwellings

LEVEL 2 UNDERSTANDING DAMP AND MOULD IN DOMESTIC DWELLINGS

AIMED AT:

This Level 2 qualification is primarily designed for learners who are aged 16 or older and who already have a background and experience in the construction industry or learners who are looking to move into this sector of the construction industry.

ENTRY CRITERIA:

There are no formal entry requirements for learners undertaking this qualification, however, experience in the construction industry would be a benefit.

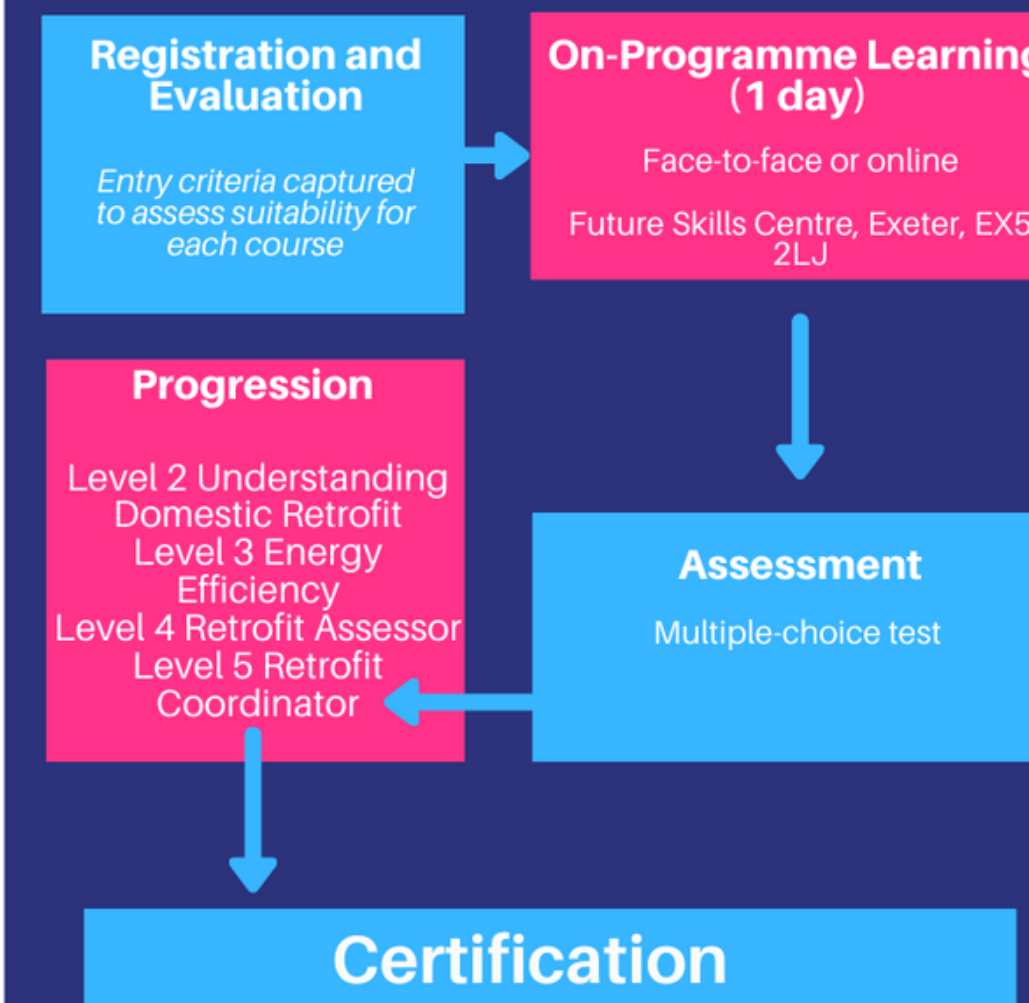
TOPICS COVERED:

- Understand the different types of damp in domestic dwellings.
- Know the causes and effect of condensation mould problems in domestic dwellings.
- Understand the impact of damp and mould problems on individuals and communities.

ASSESSMENT

This qualification is assessed via a multiple-choice examination.

TIMESCALES



ACHIEVE

NOCN Award Level 2 Understanding Damp and Mould in Domestic Dwellings

COSTS & FUNDING

Heavily discounted with funding from the Department for Energy, Security and Net Zero (DESNZ)



APPLY NOW



www.fssexeter.com/green-skills-courses/



exeter college