



**CONSTRUCTING
EXCELLENCE**
South West



2017 ANNUAL REPORT




Rook Lane Chapel
Bath Street
Somerset
Frome
BA11 1DN

Tel:01373 468039
info@cesw.org.uk
www.cesw.org.uk

Cover Image: CESW Adopt a School Scheme- Acorn Blue at Redruth School

Annual Report kindly supported by NVB Architects

 [@cesouthwest](https://twitter.com/@cesouthwest)

 [ConstructingExcellenceSouthWest](https://www.facebook.com/ConstructingExcellenceSouthWest)

 **NVB Architects**
ROOK LANE

Contents

Reports

Chairman's Report	4
CEO Report	5

CESW

What is Constructing Excellence?	7
----------------------------------	---

Club Reports

Bath Club	9
Cornwall Hub	10
Dorset Club	11
Somerset Club	12
Swindon & Wiltshire Club	13
Devon & Exeter Club	14
Gloucestershire Club	16
Plymouth Club	18

Thought Leadership Forum Reports

Construction Clients Group	19
G4C (Generation for Change)	19
Lean Forum	20
Marcoms Forum	20
Procurement Forum	21
Sustainability Forum	22

Leadership Council

Training and education collaboration	23
--------------------------------------	----

ADOPT A SCHOOL SOUTH WEST

CESW's Adopt a School Campaign	24
--------------------------------	----

2017 SW Built Environment Awards

Celebrating Regional Excellence and Best Practice	27
Achiever of the Year	27
Client of the Year	27
Digital Construction Project/Initiative of the Year	28
Health & Safety Award	28
Image of Construction Award	29
Innovation Award	29
Integration & Collaborative Working Award	29
People Development Award	30
Preservation & Rejuvenation Award	30
Project of the Year - Building	31
Project of the Year - Civil Engineering	31
SME of the Year	31
Sustainability Award	32
Value Award	32
Young Achiever of the Year	32

The 2017 South West Construction Summit

Bringing together the regional construction industry and its supply chain.	33
--	----

Current Members

CE National Members	34
CESW Regional Members	36
Clubs (Administered by the regional centre)	37

Reports

Chairman's Report

Reflecting on the last year it is easy to focus on the immense change that has occurred on a global scale, some of which has without doubt impacted on the construction industry. But despite the shifting tectonic plates of the political world, Constructing Excellence South West has continued to grow and flourish and play its part locally, regionally and nationally.

So much of this is down to the support and loyalty from our members, supporters and many participants of our every growing programme of activities and events. To say we have had a busy Constructing Excellence South West year feels almost an understatement. May I take this opportunity to offer my thanks to everyone who has supported us and made this another successful year.

It has also been a defining year for Constructing Excellence South West, a new Chair, a new style of leadership and an opportunity to take stock of the organisation's great achievements to date and examine how best to maintain our upward trajectory of growth and influence in the sector. I would particularly wish to thank the immense commitment and support of the Construction Excellence South West Board along with Andrew Carpenter, our CEO in working together to reshape the organisation.



Emma Osmundsen- Chairman CESW

We remain firmly rooted in working together to promote the value and importance of Excellence through Collaboration but we are working on refreshing the vision of Constructing Excellence South West and re-examining our purposes as an organisation.

Constructing Excellence is all about opportunity and creating an industry of opportunity for everyone, in all its varied sectors. How well this is illustrated with the success of our Adopt a School Campaign, the growth in our G4C membership and successful programme of events, and not least the G4C Awards which showcases the young talent we have in the region. It is great to see that we can offer a most amazing network for the future, particularly for those in their early career, where they can enhance their knowledge, skills and experience so they can move forward in what is an exciting business and become the future leaders of construction in the South West.

Our vision for Constructing Excellence South West remains the same, Sharing, Influencing and Networking and in this Report you will see countless examples of how our Clubs and Forums do just this. Between the Clubs and Forums there have been 96 events over the year, covering the themes that are embedded in Constructing Excellence South West's priorities, namely, Collaboration, Productivity, Sustainability, Image, Innovation and Skills. Many of these events have showcased a number of incredible construction and infrastructure projects completed recently in the South West, all beacons of Best Practice and illustrative of the immense talent and skill held within the industry locally.

Despite the ever-changing political climate, construction in the region strives and this is testament to the collaboration created within the industry and the can-do attitude that gives us the confidence to 'punch above our weight'. As this Report looks back over the events of last year, may we also look forward to an exciting and no doubt eventful next year safe in the knowledge that as part of a Constructing Excellence family we have a powerful network that is open hearted with what it shares and influential in what does in the South West.

CEO Report



Andrew Carpenter- CEO CESW

Wow, what another fabulous year we have enjoyed within Constructing Excellence South West. We've heard from Emma about the exciting prospects going forward and I too share that anticipation about things to come. However I would like to place on record our thanks to our retiring chair, David Renwick who stood down in the summer of 2017, and all other board members who have helped us get to the wonderful position that we currently find ourselves. We now have over 1000 active volunteers working tirelessly within our nine 'Best Practice' Clubs and nine Thought Leadership Forums all helping to drive the improvement agenda throughout the South West construction industry. I would like to thank all members of Constructing Excellence, whether that be national, regional or club, for helping to make us THE organisation to deliver collaborative working. I'm impressed and humbled as I travel around the South West peninsula to see so much activity and the positive impact we are having on people's lives.

None more obvious than within our Adopt a School campaign where, thanks to the generosity of Southern Construction Framework and the sterling efforts of Emma Hannam, we now have 50 partnerships in place. I've been fortunate to see the effect these partnerships are having on raising the profile of construction as a career of choice and improving our image along the way and can confirm that thousands of young people are now considering a career in the built environment thanks to this scheme. Watch this space as we are working on an Adopt a Barracks campaign (working title) where we intend to entice ex-military into the construction industry across the South West!

We have started four new Thought Leadership Forums since our last AGM namely an Innovation Forum chaired by John Savage, a Digital Technologies Forum (previously BIM Forum) chaired by Dean Hunt, an Offsite Technologies Forum chaired by Alan Ringe and most recently a Sustainability Forum chaired by David Greensmith, and I would like to wish them all well in producing deliverables to improve the performance of the industry in their chosen area. They along with our existing Thought Leadership Forums that cover Procurement, Lean, Marcoms, Construction Clients and Young People (G4C) are the generators of the 'best practice' we are then able to communicate and disseminate. I would also like to welcome new club chairs in Peter Everitt (Plymouth Club), Mike Borkowski (Devon & Exeter Club), Carol Henegan (Swindon & Wiltshire Club), Kevin Harris (Gloucestershire Club) and Julia Davenport-Cooper (Bath Club) all of whom who have taken up post since the last AGM. They along with the other four clubs provide that all important interaction with life at the coalface and we are indebted to their continuous support.

Our events during the past twelve months have, in the main, been well attended and received. In particular I would like to mention our Summit in June of 2017 which saw almost 300 people attend Ashton Gate, Bristol for what was considered to be our best ever. We introduced G4C Awards for the first time this year with grateful thanks to Morgan Sindall, Faithful + Gould, Aquarian Cladding, Sir Robert McAlpine, Burgess Salmon, Ashfords, Exeter College and Bridgwater & Taunton College for their generosity and foresight in sponsoring these inaugural awards. Congratulations to all those young people nominated and Danial Baggot of BAM Construct in particular for being our inaugural winner. We are intending to build on their success in 2018. Our recent Housing Summit was another hit with delegates with keynote speakers Mark Farmer (of Modernize or Die fame and new CE co-chair) and Ian Knight (HCA) both gaining top marks according to the evaluation forms. I was particularly excited about launching our first podcast earlier this year when I interviewed Mark Farmer about his Modernize or Die report one year on and we hope to record a number of these throughout 2018 as we keep abreast of modern technology in terms of providing information in a way people now require it.

The Leadership Council goes from strength to strength and we welcomed Bob Taylor of South West Water as its new Vice Chair this year. Two particular pieces of work are worthy of special mention in the creation of a Mediation Guide led by Christopher Reeves, where twelve lawyers all agreed on the content for this publication (now this must be a first!) and a Collaboration Capability Programme that is being led by Liz Bennett. In the latter we are involving South West clients in trial projects to use the new ISO44001 for collaborative working. The question we are asking is that “if we do eventually agree collaboration is the way forward do we have the skills required within our companies to deliver it?”

The CESW internal team continues to perform miracles and I would personally like to thank Caroline Cash, Jayne Taylor, Andrew Brown, Philip Jansseune, Sarah Ratcliffe, Mike Candlin, the afore mentioned Emma Hannam and of course Martyn Jones for the work they all do above and beyond the call of duty. We have built CESW over the past four years into an organisation that now requires governance, an operating structure and a business plan to allow it to meet its full potential and move to the next level. However we must never lose the three things that have got us into this position in the first place namely TRUST, GOODWILL & PASSION. These are the ingredients on which CESW is based and long may that continue.



CESW

What is Constructing Excellence?

Constructing Excellence is a not-for-profit think tank and best practice organisation charged with improving the performance of the UK construction industry for the benefit of its clients and all stakeholders. A platform for industry improvement to deliver better value for clients, industry and users through collaborative working- Excellence through Collaboration. With the exception of Constructing Excellence Wales it does not receive funding from any government source and is therefore self-funding. For many parts of Constructing Excellence the main form of income is received via membership.

Benefits of Membership

Constructing Excellence South West provides practical support by providing members with the following benefits:

- Your chance to influence the change agenda / industry / government
- Networking
- Learn and share best practice principles
- Knowledge transfer
- Enhance profitability/productivity
- Improve understanding
- Access to tools
- Peer intelligence
- Increased business opportunities
- Discounted access to conferences, seminars and workshops
- Raise profile in the region
- Influence the change agenda/industry/Government

Our Themes



Membership Overview

In essence the entire Constructing Excellence network is looking for individuals and organisations who want to 'improve the performance of the UK construction industry' through collaborative working and an integrated supply chain and all that brings. Those who truly believe in this will value it and be prepared to pay into the CE pot to ensure it happens as is proved by those already engaged. Membership can be broken down into three levels; National, Regional and Club.

National Members

Any national member of Constructing Excellence has access to all regional activities and events and clubs managed from the South West centre, ie: Bath, Cornwall, Dorset, Somerset and Swindon & Wiltshire Clubs. This means that personnel from a national member of CE enjoy the same privileges, in terms of discounted events etc., as regional membership.

Regional Members

Any regional member of Constructing Excellence South West has access across the South West events, activities and clubs managed from the South West Centre (ie: Bath, Cornwall, Dorset, Somerset and Swindon & Wiltshire Clubs). Within your regional membership is an entitlement for one individual from your organisation to also join the individually administered Club of their choice (ie: Bristol, Gloucester, Plymouth and Devon & Exeter clubs).

Membership rates start at £210 and are set according to industry spend (clients) or business size (contractors/suppliers/consultants).

Membership

When members join (National or Regional) they are asked if they would like to become members of a forum/group. These various groups are:

- Construction Clients Group
- Digital Technologies Forum
- G4C Group (Generation for Change South West)
- Innovation Forum
- Lean Forum
- Marcoms Forum (Marketing & Communication)
- Offsite Technologies Forum
- Procurement Forum
- Sustainability

Regional members have access to the Members Area of the CESW website and are issued with a username and password.

Club Members

Club Membership within the South West falls into two categories:

1. Self-contained clubs
i.e. Bristol, Gloucester, Plymouth and Devon & Exeter.
Membership fees are set by each individual club.
2. Clubs managed from the South West centre
i.e. Bath, Cornwall, Dorset, Somerset and Swindon & Wiltshire.
Membership Fees: Organisations £210 Individuals £105.

South West Clubs are encouraged to publicise their events and activities through the CESW web site to ensure as wide an audience as possible.

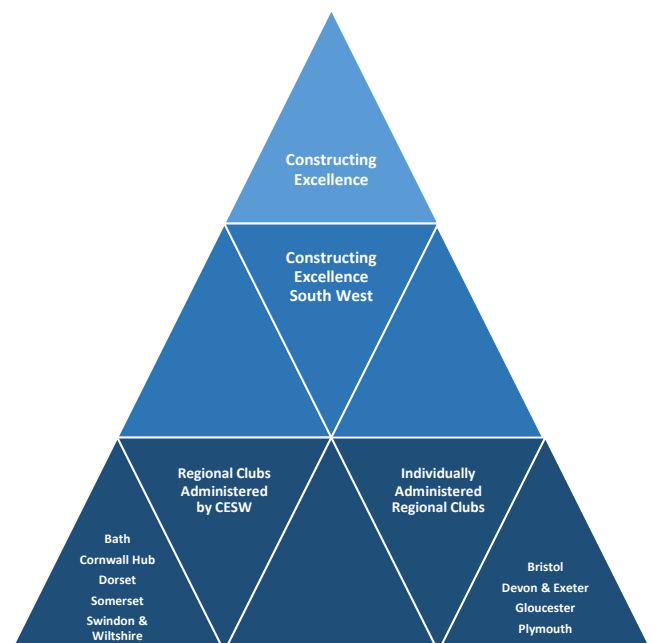
In Summary

National Members receive national, regional and Bath, Cornwall, Dorset, Somerset and Swindon & Wiltshire Club discounts as though they are regional and club members.

Regional Members receive regional and Bath, Cornwall, Dorset, Somerset and Swindon & Wiltshire Club discounts as though they are club members.

Club Members only receive discounts for their OWN clubs.

All membership monies become payable on 1st April each year.



Club Reports



**CONSTRUCTING
EXCELLENCE**
Bath Club

It has been a positive second year for the club in Bath, we have a growing membership and a growing programme of well attended events.

The aim of the club is to fulfil an opportunity for those working in the construction industry in the Bath area to be able to learn from each other and improve communication channels across more traditional sector boundaries. Moreover, it presented the potential to tackle some particular challenges, such as the geographical constraints and inherent planning issues, which the area faces

The club has an active committee that meets every month and a growing number of individual and corporate members who have been able to attend the events offered to date. We are pleased to welcome Barclays Bank, Triodos Bank and Mogens Drewett to our corporate memberships.

Events this year have included subject matter expert talks on topics such as winning in the workplace a talk about health and wellbeing and the implementation of that in design from BuroHappold Engineering, and a site visit of the Archway Project a Roman Baths project converting former Victorian spa buildings. By the time of this report we shall also have held our event on Healthy Housing for the displaced. This talk by the University of Bath on their research to improve the living conditions in refugee camps gives us an opportunity to learn and gain knowledge on important worldly issues going on outside our city.

As we prepare the event timetable for 2018 the committee are excited about continuing the growth of the club to date by creating opportunities for the construction community around Bath to talk, learn and share good practice as effectively as possible.



Joint CE Bath Club & Women in Property Tour of the new Apex City of Bath Hotel



CE Bath Club Networking, Drinks & Canapes at No 15 Great Pulteney Street



CE Bath Club at Bath Races Property & Construction Day



**CONSTRUCTING
EXCELLENCE**
South West

The CESW Cornwall Hub, which is a 20 strong and growing, group of construction professionals who represent a wide cross-section of the industry in Cornwall, continues to meet regularly. The remit of the Hub is to share and promote construction best practice in Cornwall, as well as inform and influence the wider Construction Strategy for Cornwall.

The Hub continues to work closely with the Cornwall and Isle of Scilly LEP, to rollout Cornwall's Construction Strategy. A key area of focus this year is around capacity and skills development. This sits alongside the Cornwall Hub's Adopt a School work, and extends to supporting careers shows and helping to educate the educators about the merits of a career in the Construction Industry.

Events held in the year include the Outcome Led Procurement HtL workshop which was well attended by Hub members and thanks to their contributions alongside the excellent work of the Procurement Forum team, it was a great success. A further event is planned to follow up on commitments made and to monitor changes in behaviours.

2 conferences were held in the last 12 months. Firstly, Brexit – looking at the national, regional and local impact for the county that voted to leave despite receiving significant ERDF funding. Headline speakers included the local MP, Chair of the LEP and Natwest/RBS's Head of Research & Strategy. Despite the calibre of the speakers, they were however, unable to provide all the answers as to the future of the UK or Cornwall's economy!



BREXIT...what happens next?
The opportunities and challenges for construction in Cornwall

Friday 25 November 2016
8.30am for a 9.00pm start – 12.30pm

Following the vote to leave the EU there has been and still is, a high degree of uncertainty surrounding the immediate future of the UK Construction Industry.

Early fears of a market crash were perhaps greatly exaggerated but nothing has really changed yet, so what happens next...? We can't promise all the answers but we can give you some of the best informed views on what might happen.

Steve Double MP will give us the latest position from Westminster, two days after the autumn statement, then Mark Duddridge (Chair of the CIOSS LEP) will share his thoughts on the likely impact on both EU funding and the economy of Cornwall.

Other confirmed speakers include NatWest's Chief Forecaster and Market Commentator Tom Sharnen, CITB Southwest's Partnerships Manager Leif Faily, looking at the impact on the national and local labour markets and Foot Anstey's James Fells, on procurement and the associated implications of Brexit.

The opportunities and challenges that lie ahead will be discussed and debated at this 'must attend' event for anybody interested in the strategic direction of Cornwall's construction industry.



Venue
Foot Anstey LLP, High Water House
Malpas Road, Truro, Cornwall TR1 1QH

Date
Friday 25 November 2016

Time
8.30am registration and refreshments for a 9.00am start
12.30pm close
followed by lunch and networking

Cost
£75 for members + VAT
£50 for non-members + VAT

Note
This event is CPD accredited by Constructing Excellence

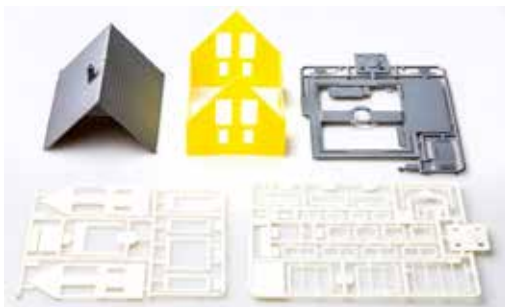
How to book
Book your place at Eventbrite
[www.eventbrite.co.uk](https://www.eventbrite.co.uk/e/brexit-what-happens-next)

Sponsored by



Design: www.designpressroom.co.uk

Sharing Networking Influencing



Constructing Excellence Cornwall Hub
Construction Innovation – Digital and Offsite

Friday 21 July 2017, 8.30am – 12.30pm

Exciting advances in construction technology such as robotics, immersion augmented reality, additive manufacturing and volumetrically pre-assembled modules are being reported every week.

The direction of travel is towards a smarter, more responsive and efficient built environment and the acceleration of the wider digital revolution combined with a shrinking traditional construction workforce are two issues which are critical to the future fortunes of the construction industry.

In the construction sector, we will all face the challenge of embedding these technologies, as well as attracting a new wave of digitally competent kids into our industry.

This Constructing Excellence Cornwall event provides an opportunity to see and experience some of the latest design and off-site manufacturing technologies that you will need to embrace over the coming years.

Venue
Foot Anstey LLP, High Water House
Malpas Road, Truro, Cornwall, TR1 1QH

Date
Friday 21 July 2017

Time
8.30am – Registration and refreshments for a 9.00am start
12.30pm – Conference closes (followed by lunch and networking)

Cost
Costs £25 +vat members / £50 +vat non-members

How to book
Book your place at Eventbrite
[www.eventbrite.co.uk](https://www.eventbrite.co.uk/e/construction-innovation-digital-and-offsite)

Please note
Due to very limited space at Foot Anstey's offices, we would recommend parking at nearby car parks at Genus Wharf, Newham Rd or High Cross, St Clements Rd

Supported by



Design: www.designpressroom.co.uk

The second conference was themed around construction innovation – digital and off-site – and provided an opportunity to see and experience some of the latest design and manufacturing techniques emerging in the industry such as robotics, immersion augmented reality and additive manufacturing and volumetrically pre-assembled modules.

Going forward the Hub will continue to work closely with the LEP, who are looking at developing a 'Build Cornwall' model along similar (but different) lines to Plymouth model, as well as looking at ways of working more closely with the BRE Hub who are based at Eden.

CONSTRUCTING EXCELLENCE

Dorset Club

The Dorset Club has had a very positive year 2016- 2017, increasing its membership and organising high quality events. We had the opportunity to visit the newly refurbished Lighthouse Theatre in Poole, the old Crown Court of Dorchester, took part in the Little Bristol sailing event and organised a very successful event on the theme of “planning” in the newly opened Duchess of Cornwall pub in Poundbury, Dorchester.

We work closely with the neighbouring clubs, in particular Hampshire and Bath where events are open to each other’s members at the same conditions as for local members.

Looking ahead to 2018, we will be meeting to introduce our new members to the Club and plan the year ahead. We already are looking at a new sustainable technology workshop sponsored by Tesla in 2018.



DORSET CLUB EVENT

MONDAY 17TH OCTOBER 2016

Some exciting changes are taking place at Lighthouse, Poole

Join us to visit the current refurbishment project. David Roger from Steppell, Chris Timlin of the SWEET Group and the CEO of Lighthouse, Elizabeth McLean will guide us through the spaces and explain the challenges and solutions implemented in this remarkable project. We'll then gather in the Lighthouse for refreshments.

The Project:

In June 2016 work began on the final phase of a £5.3 million project to refresh the building for customers and artists which re-opens to the public mid- October with a phased programme which includes:

- A new central main entrance and refurbished main foyer.
- The Studio Theatre completely transformed.
- Refurbishment of dressing rooms.
- New stage door and creation of the first green room.
- Upgraded functions rooms within the new Learning Suite.
- New plumbing throughout and new air cooling and humidity to the Concert Hall.
- Refurbished mechanical infrastructure to unique concert hall floor and platform.

Please ensure appropriate clothing including sturdy footwear (no open toed sandals or thin heels). Hi-vis jackets and hard hats will be provided.

For further information about Lighthouse please visit: www.lighthousepoole.co.uk

Venue:
The Lighthouse
21 Kingland Road
Poole
Dorset
BH15 1UG

Date:
Monday 17th October 2016

Time:
4.30pm - 6.00pm

Cost:
Dorset Club Members: Free
Non Members: £20 plus VAT

How to book:
Book your place at:
<http://dorsetclub-lighthousevisit.eventbrite.co.uk>

Parking:
Parking is available at the Dolphin Shopping Centre (multi-storey over the road from Lighthouse and the level access car park directly opposite).
Disabled parking is available directly outside Lighthouse.



How to join CESW Dorset Club
<http://www.constructingexcellence.org.uk/members/apply-for-regional-membership/>

Networking, Influencing & Sharing Knowledge



Shire Hall Project Visit

Making history come alive

Wednesday 24 May 2017, Talk and Tour at 10am and 12pm
Join us for a tour of Shire Hall to see the works we are undertaking in making this Grade 1 listed building into a world class visitor attraction. We are just over a third of the way into this contract. It is a great opportunity to see the transformation and careful restoration of this historic building.

Shire Hall was built between 1795 and 1800 and designed by London architect Thomas Hardwick who provided a handsome building with a severe classical frontage to High West Street. The building included the Crown Court which hosted the travelling assize court. The court was the scene of the trial of the Toppuddle Murders in 1834 and later the writer Thomas Hardy served there as a magistrate. The court was used until 1953 while the rest of the building continued to be used for local government until West Dorset District Council moved to new offices in 2012. Time has stood still at the court and cells, which appear today almost as they did in Georgian times.

- The new visitor centre, which is part funded by HLF, will have a new reception, cafe and learning spaces etc.
- Full accessibility for all with a lift serving all public spaces
- Two new flats, are being created to assist in the funding of the project
- New side and lead roof
- All new M&E services

A new atmospheric tour will be available to visitors which will take them down to the cells and up to the court room clock.
Please ensure visitors wear appropriate clothing including sturdy safety footwear. Hi-vis jackets and hard hats will be provided.

For further information on the Shire Hall project go to:
www.dorsetforyou.com/shirehallproject



Venue
Greenade Construction Site Office
Shire Hall, High West Street
Dorchester, Dorset DT1 1UZ
Site entrance is at rear of Shire Hall building

Date
Wednesday 24 May 2017

Time and numbers restricted to
Two sets of 12/14 and talk
1st tour / talk – 10.00am
2nd tour / talk – 12.00pm

Cost
Free to CESW National, Regional and Dorset Club members
All others £10.00 plus VAT

Parking
Public car parks at County Hall or top of town. There is no parking on site.

Note
This event is CPD accredited by Constructing Excellence

How to book
Book your place at Eventbrite:
dorsetclub-shire-hall.eventbrite.co.uk

Design: www.thebipartners.co.uk Sharing Networking Influencing



Dorset Planning

Friday 10 March 2017, 12.30pm – 3.00pm
After successive attempts to resolve the housing crisis, it is now time to take a different approach to housing and large scale developments. After the publication of the Government White Paper and with the debate on Green Belt being very heated in the media, what are the real options to move forward and what are the real challenges for all stakeholders?

CE Dorset club has gathered major actors in the Region to present case studies in the unique setting of the newly delivered Duchess of Cornwall restaurant in Dorchester.

Join us for this exceptional event.

Keynote speaker:
Simon Conibear – Duchy of Cornwall, Director of Development, Poundbury Case studies of sustainable approach to development

Speakers
Tom Stanley – Callers International, Director of Planning The challenges of planning for large scale development
Mike Garrity, County Planning Officer/Team Leader The challenges faced by the Local Authorities with regards to Planning

David Roe
Dorset County Council, Design and Construction Manager, Dorset County Council New Dorset School project in Poundbury



Venue
Duchess of Cornwall
12 Queens Mother Square
Poundbury, Dorchester DT1 3BW

Date
Friday 10 March 2017

Time
12.30pm – 3.00pm

Cost
£ 50 + VAT for CESW national, regional and Dorset Club members
£20 + VAT for non-members

Note
This event is CPD accredited by Constructing Excellence

How to book
Book your place at Eventbrite
cesw-planning-dorset.eventbrite.co.uk



Design: www.thebipartners.co.uk Sharing Networking Influencing

This year, the second that the Club has been running has been a bit of a challenge – second season syndrome perhaps. Whilst the Committee has been fully engaged and there have been some regional events held in the Club area, we have been unable to get the membership to grow as much as we would like and for it to fully engage with the Club’s activities.

There have been some successful events held during the year. The regional Garden Town event held in Taunton in early April was very well attended and the Hinkley Point visit in June was also a great success. EDF have also hosted other events for CESW. With the kind support of EDF, the Club hopes that similar events will be held regularly throughout the project’s construction.

Liz Bennett has also successfully trialled a CDM workshop this year and has kindly agreed to make this available to other Club’s in the region. There have also been a number of networking events in Somerset, but the take up for these has also not been without problems. Notwithstanding that, the recent Golf Day was a huge success.



The Committee is also engaging with the Adopt-A-School campaign and has found that construction does have some catching up to do in terms of its standing within schools as well as with parents and students.

It was disappointing that a regional event on the topic of Grenfell Tower, and the Club event hosting the Here to Learn Procurement Workshop had to be cancelled due to lack of interest. The Club is considering why these events were unsuccessful, e.g. suitability of venue, timings, subject matter, etc. It is anticipated that the Procurement Workshop will be offered again in the New Year.

Discussions will be held with other, more established, Clubs over the coming months to see what lessons may be learned from them to deal with these issues, but the Committee remains enthused to promote construction in Somerset and the region.



Visit to Hinkley Point C

Wednesday 7 June 2017, 8.30pm – 8.45pm
 CE Somerset Club has secured an afternoon visit to the HPC site on 7th June. EDF Energy and its partners are developing a new nuclear power station in Somerset that will provide low carbon electricity to around five million homes. The project, that received the final approval in September 2016, marks the rebirth of the UK’s nuclear industry and will continue Hinkley Point’s proud track record of safe nuclear power generation dating back over half a century. The construction of the power station and its associated developments is a massive investment that will create over 25,000 job opportunities, will take almost a decade to complete and provide 900 permanent jobs once it is fully operational. Safety is our number one priority.

In March 2017 the first permanent concrete was cast signalling an important milestone in the project programme. Over 1500 are currently working on site undertaking the major earth works and initial construction of the deep galleries, constructing a sea wall and a temporary jetty almost 500 metres long. This visit will involve a bus tour of the site followed by a Q&A session with HPC staff at the site visitor observation facility. All visitors will be required to bring photo ID and must be registered in advance of the visit. The visit is courtesy of EDF Energy and hence is not chargeable, however early booking is recommended using the Eventbrite system as numbers are limited. Priority will be given to Somerset Club members.



Meeting point
 HPC Park & Ride
 Quantock Lakes, Inwood Farm
 Heleford Square, Somerset TA5 1HY
Date
 Wednesday 7 June 2017
Time
 8.30pm – 8.45pm
Cost
 Free
Parking
 Use the HPC Park and Ride system shown below.
How to book
 Book your place at Eventbrite: www.eventbrite.co.uk



Directions to Quantock Lakes
 Park and Ride
 Turn off the A39 to Quantock Lakes and follow the road and signs 'Quantock Lakes' and then 'HPC Park & Ride' into the parking area. The bus pick up point is near the walkway in front of the parking area. Please make sure you have your photo ID with you when you board the bus. The bus driver will not conduct an ID check on this, as this will take place when you arrive at HPC site at by the Security team.



A Guide to Excellence series **Staying out of jail (and in business)** Health, safety and CDM 2015

Wednesday 15 March 2017
Time 8.30pm to 8.30pm

- We will cover:**
- The terrifying things that can happen: jail, huge fines, no work pipeline
 - What the HSE is doing in 2017
 - An overview of business H&S requirements
 - An overview of risk assessment
 - An overview of CDM 2015
 - The automatic liability you get on domestic projects
 - Apps, web tools, training and the advice available to help you
 - Using H&S to win work. Yes, seriously!

A pilot in a series of Guides to Excellence. Each event:

- Provides a clear overview of a topic;
- Is presented by an industry specialist;
- Provides clear signposting to further information, training, mentoring and more;
- Allows for feedback. What more do we need? How can we thrive as a region? More?

Venue
 Construction Skills and Innovation Centre
 Bridgwater and Taunton College
 Robbery Carrington
 TA5 2LS
Date
 Wednesday 15 March 2017
Time
 8.30pm to 8.30pm
Cost
 £5 for members and £10 for non-members
How to book
 Book your place at Eventbrite: www.eventbrite.co.uk
 This course is brought to you by Construction Excellence Somerset Club in association with Safety in Design.





CONSTRUCTING EXCELLENCE
Swindon & Wiltshire Club

Following a review of the club earlier in the year a new committee was formed and it was felt that there was an appetite to re-launch the Club in the County. Carol Heneghan has been appointed as Chair.



Wiltshire is a large county of almost two halves; Swindon and the M4 corridor and then the Salisbury area to the South with big spaces in between. There are however some major developments in progress and coming forward. The Army Basing Programme is progressing with more military developments in the pipeline, housing features big in the county, the UK's first private university being built in Malmesbury by Dyson, with modular student accommodation, and the development of the Hullavington airbase for battery and electric car production, there is certainly going to be some major construction projects coming forward. Like the UK, Wiltshire is struggling with the demand for construction skills, many of the counties further education establishments are now providing construction related courses often with industry support and sponsorship. The Swindon and Wiltshire Local Economic Partnership are championing construction skills development in the area as well as housing growth and modular construction, all areas which align with the new committees key drivers for the club.

In its infancy though, the club is still being set-up and is looking for more members.

Club Themes have been confirmed as:

- Innovation- particularly modular & custom build
- Project based- highlight the key project in the area to raise the Wiltshire and Swindon profile
- Skills- Wiltshire is stuck between a number of major conurbations which all have very active CE clubs and construction networks, however Wiltshire does have a number of great construction initiatives that will raise the profile of the industry.
- Networking- the key reason many will join up. CE Wiltshire & Swindon will seek to join up the various areas within the county.



NEC4, what's new?

A summary of the headline changes as well as a deeper delve into some of the more subtle changes with this revised NEC contract

Wednesday 22 November 2017 from 8.30am – 11.00am

Agenda
08:30am – Registration and refreshments
09:00am – Speaker
10:00am – Q&A and networking

Speaker
Michael Craik, Partner at Clarke Willmott LLP specialising in Contract Law
www.clarkewillmott.com/find-a-solicitor/michael-craik

Under the NEC4, the 'Employer' is no more being replaced by the 'Client' and the contract is gender neutral. These are two small changes. However, the NEC4 introduces a number of substantial changes that our guest speaker, Michael Craik, will discuss in more detail so that users of this form of contract are aware of these changes and can act accordingly.

Venue
Cotswold Room, Wiltshire Council
County Hall, Bythessea Road
Trowbridge, Wiltshire BA14 8JN

Date
Wednesday 22 November 2017

Time
8.30am – 11.00am

Cost
£10 + VAT for members
£15 + VAT for non-members
This includes refreshments

Parking
There are a limited number of visitor parking bays available for 2 hours at County Hall. Please ensure you register your vehicle at the registration point inside the entrance doors. Details on alternative parking is available at www.wiltshire.gov.uk/findacarpark.htm?area=Trowbridge

How to book
Book your place at Eventbrite: <https://ceswindonandwiltshirecontractchanges.eventbrite.co.uk>

Queries
Contact Suzanne with any queries at Suzanne.Gough@wiltshire.gov.uk



The Club was originally created as the Constructing Excellence West Country Club but changed its name to The Devon & Exeter Club with the creation of the Plymouth and Cornwall Clubs.

The Club has 86 members, although not all are up to date with Club membership fees. The Club has a healthy Bank balance at present.

teamwork
the last competitive advantage

CONSTRUCTING EXCELLENCE
in the built environment

Date: 23rd March
8.30am - 10.30am

Refreshments available

Entry Fee
£5 Members
£10 Non-Members

Location:
Ashford House, Grenandier Road, Exeter EX1 3LH

Events this year have included the following:

March 2017
Team Work- The Last Competitive Advantage- Paul Fox

May 2017
Speaker : Be Heard
How to Communicate with Power Grace and Style
Talane Miedaner

July 2017
Joint Exeter/Plymouth Club Event
(Breakfast at the Atrium School)

September 2017
IKEA : Global Collaboration Comes to Exeter

IKEA: global collaboration comes to Exeter

Tuesday 19th September
8.30am - 10am

One aspect of IKEA's success is the way it seeks to collaborate with its suppliers. This results in better design solutions, lower costs, less waste, improved safety and more engagement.

The consequences of these benefits can be seen in IKEA's product ranges. Who hasn't bought a Billy bookcase? You may not have realised it but this simple, successful product is the result of supply chain collaboration.

In construction, supply chain collaboration is promoted by Constructing Excellence as a key improvement tool.

The new IKEA store in Exeter is a 35,000sqm demonstration of collaboration in action. Presented by Andy Gibbs and John Rush of SNA Architects.

Ashford LLP
Ashford House,
Grenandier Road, Exeter EX1 3LH

Andy Gibbs
Director
01392 262900
andy.gibbs@snadirect.co.uk

John Rush
Director
01392 262900
john.rush@snadirect.co.uk

CONSTRUCTING EXCELLENCE



Constructing Excellence Plymouth meets Constructing Excellence Exeter at Atrium Studio

Thursday 13th July 2017

8:45 AM start

Don't miss this fantastic one-off opportunity to network with your Constructing Excellence neighbours.

CE Plymouth and CE Exeter are delighted to be holding a joint networking breakfast morning in association with the Atrium Studio School. Delegates from each group will have the opportunity to network with each other over a breakfast in the wonderful setting of the Atrium Studio School.

You will arrive to a warm welcome from committee members for informal networking before being seated with an introduction from Mike Smith, Chairman Constructing Excellence Plymouth and Matt Messias Principal at Atrium School.

Here they will introduce you to the school, students and our plans for various events throughout the year. There will also be an opportunity to register with the school to become an approved work placement provider.

You will also have a chance to walk around the school and meet some of the students.

To book a place, please ensure you follow the Eventbrite link, we look forward to seeing you on Thursday 13th July 2017.

Venue

Atrium Studio School, Balland Lane, Newton Abbot, TQ13 7EW

Date

Thursday 13th July 2017

Time

Arrival 8:15 for 8:45 start

Cost

Free

How to book

Book your place at Eventbrite:

<https://www.eventbrite.co.uk/e/>

In conjunction with Atrium Studio:



CONSTRUCTING EXCELLENCE Plymouth Club

making a difference

The Gloucestershire Club continues to provide a dynamic and informative forum for sharing experiences and promoting the very best innovative and collaborative construction methods within the County.

Our membership has now grown to around 25 corporate members and 15 individual members – numbers which continue to grow each month.

This year we managed to maintain our monthly events programme, these were a mix of site visits, seminars and great speakers.

Our Spring events included:

February- Cirencester Baptist Church Visit- members were invited on a visit to tour the newly constructed Cirencester Baptist Church, built at a cost of £2,800,000.

March – Gloucestershire College house project – a fascinating talk from the College about their first-of-its-kind house renovation project which provides their apprentices and full-time students with a unique opportunity to develop their skills in a real-time environment.

April- visit to SCS Berkeley Green- for many years the site at Berkeley Power Station and Laboratories was at the forefront of electricity generation and research. Moving forward it is now creating the next generation of science and technology engineers at the same time as re-energising an area as a business park of the future.



- Visit to The Field Centre in Nailsworth, the visit explored the design, use of materials and workmanship of the buildings and touched on the organisation’s work. The centre acts as a hub for collaborative research into Rudolf Steiner’s spiritual scientific methods, in particular through the lenses of Human Development, Biodynamics and Consciousness Studies.

Our main event was in May, and this year our theme was “Building Links with Sport” where we challenged the speakers to explore the links between construction and sport, both within the county and across the rest of the UK. Speakers included Stephen Vaughan, CEO of Gloucester Rugby Club- Alex Gidman ex England cricketer – Helen Taylor CEO of Forest Green Rovers and Stephen Limbrick of Roberts Limbrick Architects talking about their sporting complex portfolio. We also held our inaugural CE Glos Apprentice of the Year Awards, with Gloucestershire College. The Club itself enjoys a positive relationship with Gloucestershire College, hosting our monthly Committee Meetings and many other events at their facilities.

Our Summer social event was held at the Butterfly Garden Project, which is an educational, therapeutic and recreational scheme, based initially on gardening, but now offering so much more. It is a project for people of all ages dealing with disablement of any kind. It caters for those looking to escape the world, those looking to re-enter it and some, who are still just looking. Its doors are open to anyone without obligation. CE Glos has recently been supporting their amazing work in a number of ways, including the donation of time and materials in the development of a new building.

Our Autumn programme has been busy too- we had some excellent site visits in September and October, including a visit to the John Lewis Store in Cheltenham, an opportunity to see the new flagship John Lewis Store under construction, which sees a combined investment of more than £30million.



In early October we had the Llanthony Secunda Priory Site Visit, the project will create a vibrant usable green space for the people of Gloucester, incorporated into an important heritage site.

On 18 October we had the Cotswold Cheltenham BMW visit, the brand-new flagship Retail Centre in Cheltenham, the amazing new Centre was four years in the planning and more than two years in the making, but they are already absolutely thrilled with the results.



November will see a line-up of speakers discussing the following topics –

- General Data Protection Regulations
- BIM – latest developments
- Magnetic Molecules – How technology developed in the Nuclear Industry is being adapted for conventional use in construction
- Mental Health in the Construction Industry

Our 2017 events programme will conclude with our ever-popular annual curry/quiz event which also serves to raise further funds for the Butterfly Garden.

We are already scoping a number of exciting events for early 2018 and beyond.

Gloucestershire is a county with world class businesses and a reputation for starting, growing, attracting and retaining a diverse range of companies, CE Glos is proud to play its part in this success.



The Plymouth vision is to “make a difference” for everyone involved locally in commissioning, producing or using buildings/construction services. The pursuit of excellence requires an integrated approach; all stakeholders are important in this process of improvement.



We also have a club in Bristol:



Thought Leadership Forum Reports

Construction Clients Group

The Construction Clients Group held three meetings this year. The first of these meetings was a business meeting in January 2017.

The second of these was hosted by EDF at Hinkley Point and centred around an interesting debate as to the advantages of Mediation over other forms of dispute resolution. Ably led by Christopher Reeves, who has led on the preparation of an easy to read guide to the use of mediation, the meeting reminded attendees of the benefits of mediation and its alignment with the core values of Constructing Excellence.

As memorable was the opportunity to be shown around the site which was fascinating and slightly humbling, even for a group of major clients such as those present.

Our third meeting was held in Bournemouth and focussed on the challenges of new communication technology.

Ordnance Survey gave a presentation on the national pilot they have done to produce an accurate digital map of Bournemouth. The mapping is specifically designed to facilitate the installation of a 5G network but the wider opportunities of its existence were discussed.

As the meeting closely followed the tragic events at Grenfell Tower a Fire Investigation Consultant attended the meeting. He passed on some early lessons learnt and reminded building owners of their responsibilities

G4C (Generation for Change)

G4C is part of Constructing Excellence and we share joint aims. Following CE's lead in collaborative practice we seek to harness the power of new people in the industry to make changes for the better and improve the way we work together. We are open to anyone looking to join the industry, or in the early stages of their career in the built environment sector.

Our vision is "To become the organisation that is the driving force for industry change, through the development and connection of the future industry leaders"

This will be done by targeting three themes:

- People- Attracting, effectively developing, connecting and retaining the necessary people required to drive change
- Sustainability- Equipping members with the necessary skills to drive the industry and wider society towards a sustainable future
- Asset Outcomes- Supporting the industry's transformation from process driven to asset driven solutions aligned to client and wider society needs (focused on outcomes)

G4C members can benefit by:

- Having access to innovative industry thinking
- Having opportunities to 'accelerate growth' beyond typical career path(s)
- Understanding the strategic development / future of the UK Construction (asset management) industry
- Being involved in networking opportunities to form relationships with like-minded high achieving peers and to provide business opportunities

G4C South West's aims are:

- We will be the voice of our Generation
- We will influence change
- We will target key Built Environment issues within the South West
- We will help the Built Environment in the South West through linking with local business, authorities and education.
- We will use the knowledge of, and work with the entire supply chain within the industry

Lean Forum

The CESW Lean Forum was set up in September 2015 and has over 40 members from across the supply chain. Having undertaken a massive process mapping exercise early on it was decided that their first task would be to provide a 'best practice' guide to unlock development finance and so a task group consisting of Nathan Waller (NatWest), Alan Tate (Trowers & Hamblins LLP), Andrew Simpson (NVB Architects) and others was set up to deliver the project. Twelve months later in September 2016 we were pleased to launch the 'Development Finance – a best practice guide to lending' document to high acclaim which may be found on the CESW web site. Following the launch of this report the Forum now has a new chair in Steve Clark of Turner + Townsend Suiko and a new project to work on dealing with pre-construction issues and any member of CESW is encouraged to participate.

Marcoms Forum

The CESW Marketing and Communications Forum was established for one simple reason: in this day and age it is no longer enough to be good at what you do if you don't tell anyone about it.

The construction industry is a vital component of the economy of the South West but its lack of ability to communicate its successes to the wider community shows in its continued perception as a dirty and dangerous business to be involved with.

Marketing is sometimes seen as all about image and while this isn't true, it is image which prevents young people from considering a career in construction and it is image which helps fuel public opposition to development.

The Marcoms Forum therefore has two clear objectives: to improve the image of the construction industry in the South West and to raise the profile of CESW itself.

A big part of the marketing & communications strategy has again this year focused on our Adopt a School campaign. Emma Hannam continues to grow activity significantly. As STEM subject in schools continue to come under pressure due to cuts and teacher shortages we will need to be creative with how we continue to engage with schools. The Marcoms group has also supported how the group markets itself through social media and the numerous events that take place at regional and club level. Events such as the Summit and Awards are well attended and supported by the industry, more work is need to improve the external image of the industry particularly in light of bad press earlier this year.

Procurement Forum

This has been another busy year on the procurement front. The publication of the Farmer Review was yet another reminder of the need for construction to change if it is to survive and prosper. Its emphasis on integration, new project delivery methods and the increased use of larger offsite prefabricated components present major challenges for the procurers and suppliers of construction products and services.

The Forum has also been evaluating the new NEC4 contracts, which are a welcome response to procurement and project management developments and emerging best practice. Improvements in flexibility, clarity and the ease of administration are all very welcome. Two brand new contracts have been added to the suite: NEC4 Design, Build and Operate (DBO) and the proposed NEC4 Alliance Contract (ALC), which is currently out for consultation.

The Procurement Forum is using a range of models to evaluate the impact of these and other developments. We are also continuing to play our part in advocating more collaborative and integrated approaches to procurement. As set out in our two guides to **Outcome Led Procurement** this means moving away from a blame-driven culture, with penalties for failure, to a collaborative culture in which risks are shared appropriately between parties; where design and construction is treated as a joined up process; and where key members of the supply chain are involved as early as possible in the process and incentivised to deliver the desired project outcomes.

Many of the region’s Buyers continue to reactively select products and/or services from existing supply offerings made by suppliers operating at the first tier, as shown in the Supplier Selection Box of the Forum’s Four-Box Model. Moving vertically and/or horizontally on the model can bring major benefits both to Buyers and Suppliers. This involves- where the volume, regularity and nature of the work being procured is sufficient- moving from a reactive (contractual) to a more proactive (collaborative) focused buyer- supplier relationship, and/or increasing the scope of the Buyer’s influence along the supply chain.

The option currently being most closely supported by the Procurement Forum, through its Here to Learn (HtL) workshops, is to move procurement approaches horizontally on the diagram to the Supply Chain Sourcing box, circled in red in the diagram. Here the Buyer reactively selects products and/or services from the existing supply offerings made by Suppliers operating at the first and indeed other tiers having understood the nature of the supply chain through which products and/or services are created.



The HtL workshops, **Outcome Led Procurement: Getting the best out of the supply chain**, are designed and delivered in partnership with the region's nine Constructing Excellence Clubs and Hubs. The HtLs are revealing just how much additional value Specialist Contractors and Component Manufacturers can add to a project's desired outcomes when they are involved as early as possible in the design and construction process and appropriately selected and engaged. To date, workshops have been hosted by the Cornwall Hub, and Swindon & Wiltshire, and Bath Clubs.

Other ongoing Procurement Forum projects include identifying and promoting the **Top 10 Principles of Procurement** and enhancing the Procurement Task Boxes of the RIBA Plan of Work 2013. Members of the Forum are also collaborating with CESW's Lean Forum to develop a Guide to Preconstruction, including an evaluation of the Project Definition Rating Index, the PDRI.



Procurement in action

Aquarian Cladding Systems provide technical and commercial support to enable specification of their cladding systems and installation support on how to secure their cladding systems.



Foundations under construction.



Friars walk shopping centre, Newport.

Sustainability Forum

The newly created Sustainability Group is chaired by Exeter based business man David Greensmith. With over 45 years' experience in engineering and construction, and specialist knowledge in technology and energy, David fully supports the aims and ambitions of the sustainability forum. The Group has already started the sustainability journey, including even greater sharing, with aligned partnerships with a series of ambitious themes focused on challenging issues. Working as part of a wider group with greater networking with our peers, creates greater influencing, and we are having quarterly meetings, and issued a draft white paper on future energy scenarios, together with a planned conference and dinner in late 2018. The triple header of environmental, economic and social sustainability is central to our core values.



Other Thought Leadership Forums include Innovation, Digital Technology and Offsite Technology.

Leadership Council

Training and education collaboration

Construction in the UK, and particularly the south-west, is facing a major skills shortage. This is an immediate issue that will worsen unless the industry works more closely with further education colleges and specialist training providers. The construction sector needs help, but it can and must partner with the trainers, teachers and educators to ensure it gives people the skills and confidence required to make the UK construction sector sustainable.

Critical to this process is the establishment of best practice working groups involving the construction supply chain and colleges and training providers. Both sides need to share ideas, issues and knowledge to build the support and momentum urgently needed. Crucially, each lack a detailed knowledge of how the other operates. For example, small and specialist organisations in construction do not receive the support from colleges – but are the colleges aware of the issues? There is no clear pathway, careers guidance or balance of training. For example, there is not the right focus on the specific IT skills required in construction, but at the same time the industry requires traditional middle management roles such as site management to be part of an education package. We need to talk: collaborate. Working together, the industry, education specialists and trainers can go a long way to mitigating the skills crisis.

CESW has identified seven key steps to develop a collaborative problem-solving model for training and education in construction ;

1. Establish regional cross sector educational working groups to share construction technologies and methods and help organisations mutually support sustain apprentices and add value to training programmes
2. Identify a career path that is crystal clear for candidates, to help with decision-making, pointing to skills, trades and opportunities in construction and the benefits of training
3. Research, develop and establish a general construction foundation course to start someone off and include an option for apprenticeship
4. Develop training delivery models in partnership that are cost effective for everyone
5. Identify the critical skillsets required in construction – high levels of IT knowledge – example of Digital Engineers being born out of the gaming sector – not just the trades, but also QS training/apprenticeships and site supervisor roles
6. Be open to recruiting people from all background and experience – emphasis should be on persuading women joining construction; look at encouraging people to return to the industry; look to attracting people from other sectors to come across to the construction
7. Work together to help FE Colleges deliver the higher-level construction skills as well as the ‘muddy boots’ training and set up cross-skilling pathways and opportunities to support the whole construction supply chain

ADOPT A SCHOOL SOUTH WEST

CESW's Adopt a School Campaign



We have had a busy and progressive year with our Adopt a School Campaign thanks to support and sponsorship from The Southern Construction Framework.

The Re-Launch

CESW Re-Launched the scheme in Bridgwater at The McMillan Theatre in April, with excellent media coverage from the press. BBC Points West business correspondent, Dave Harvey, attended the event to do a live interview for the evening news with our patron Martin Roberts.

We were also pleased that the BBC Points West morning and afternoon news featured our Adopt a School participants 'Dribuild' who adopted Oldfield School in Bath, in a pre-recorded piece highlighting the skills shortage in the Construction Industry.



The re-launch event was followed by an 'Evening with Martin Roberts' which saw CESW CEO, Andrew Carpenter in a Q&A with the 'Homes under the hammer' star.



CITB Ambassador Training

Adopt a School held 4 Ambassador Training Workshops for our regional clubs this year. CITB Trainers Chris Gingell and Angus Hamilton led the training in Bristol, Exeter, Dorset and Somerset.

We now have 44 CITB Ambassadors working within schools with our campaign. Further training workshops are planned, starting with Plymouth in January 2018.



The Dorset Launch

In June, Adopt a School was launched in Dorset at The Lighthouse Theatre in Poole. It proved to be a wonderful opportunity for companies and schools who hadn't heard of the scheme to come and meet each other and find out more about it.

Drew Construction have now adopted Oak Academy and Morgan Sindall, Stepnell and Greendale are also adopting schools in the county too as a result of that event.



Nick Smout from Wates came along as a speaker to tell us about the work the company are doing with their adoptee school, St Peters in Bournemouth. The attendees were entertained by Tom Carpenter and his band after the speaker.

The End of Year Report

In July Adopt a School had its end of year report luncheon. Companies and school participants were invited to celebrate their achievements during the year and to share best practise and case studies.

We now have 50 partnerships on board and are looking forward to the year ahead with further regional launches in the planning.

Adopt a School held a city wide launch event in Plymouth on Nov 2nd at The National Marine Aquarium. This launch was in conjunction with Building Plymouth who is adopting schools across the city, SW Women in Construction, CE Plymouth, SW Highways and the Plymouth Construction Training Group.

Contact

For further information on the campaign please contact Emma Hannam our Campaign Coordinator.

emma.hannam@constructingexcellencesw.org.uk



2017 SW Built Environment Awards

Celebrating Regional Excellence and Best Practice

It was a Friday night packed full of festivities at the 2017 South West Built Environment Awards. For the tenth year running, 500+ delegates gathered together at Ashton Gate Stadium, Bristol on 09 June 2017, to celebrate and acknowledge the best of the region's innovative construction projects and talented individuals.

Achiever of the Year

Sponsored by: ITS Construction

Winner: Liz Bennett, Safety in Design

Liz has had an association with many and varied organisations within the UK construction industry over a number of years including CESW in recent years. She brings her breadth of expertise in the world of health & safety to any organisation with whom she is involved and her success is in no small part attributable to her personal qualities. Her knowledge, independence and professionalism with which she conducts herself means she commands the respect of everybody with whom she comes into contact.



Client of the Year

Sponsored by: Austin-Smith:Lord

Winner: The University of the West of England

The University of the West of England is now two years into its five-year Campus 2020 Programme, which will commit over £250m of capital into its campuses. The last year has seen the most significant changes yet and, as a Client, the University is clearly using its knowledge, experience and influence to push forward with key objectives including sustainability and collaborative working.

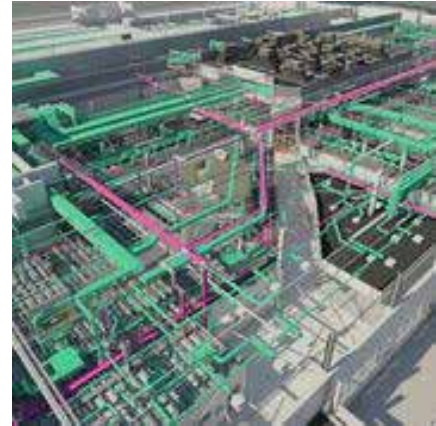


Digital Construction Project/Initiative of the Year

Sponsored by: Constructing Excellence Gloucestershire Club

Winner: BAM Construction - University of the West of England Enterprise Zone

UWE Enterprise Zone was an incredibly fast refurbishment project, completing £1.2M- £2.5M of work each month for 15 months. The £18M, 10,893m² floor area project, had explicit sectional completion dates linked to funding through the government department for Business, Innovation & Skills.



This project also won the Winner of Winners Award. Sponsored by CIOB.

Health & Safety Award

Sponsored by: The Association for Project Safety

Winner: Churngold Construction

Following the introduction of two health and safety related initiatives over the last two years, Churngold Construction- the leading South West based groundworker- has seen its AFR and AIR statistics drop from an industry average figure to zero, as well as seeing the number of minor cuts and bruises reduce to single figures each year, plus buried service strikes drop to a very small handful a year.



Image of Construction Award

Sponsored by: The University of the West of England

Winner: BAM Construction - University of the West of England Enterprise Zone

BAM believes it is their people which make them the company in which they are. They believe their people are special and believe they are the reason 98% of their customers say they would work with them again. BAM believe in an inclusive supply-chain who reflects the values and ethics that are important to the company and working together as a team to achieve a positive outcome



Innovation Award

Sponsored by: Bouygues UK

Winner: Arup – arcoBridge

arcoBridge is the world's first modular glass fibre reinforced polymer post-tensioned pedestrian bridge. It has been designed by Arup and has the potential to transform the construction, installation and customisation of pedestrian bridges deployed by the rail, highways, water and local government sectors – and beyond.



Integration & Collaborative Working Award

Sponsored by: Constructing Excellence Bristol Club

Winner: Kier Construction Western & Wales - RUH Bath Pharmacy

The Pharmacy redevelopment provided an opportunity to redesign operational services and release revenue costs through improvements in efficiency and productivity. Demolition of the existing pharmacy building enabled the sequencing of subsequent developments on the estate avoiding interface complexities and considerable decant issues.



People Development Award

Sponsored by: Hays Construction & Property

Winner: Speller Metcalfe

Speller Metcalfe is a building contractor that is proud of their family roots, with people at the heart of their business. Their vision is to encourage, develop and combine the individual skills of their personnel, valued supply chain and project teams to deliver on their key values in a sustained drive towards innovation and best practice.



Preservation & Rejuvenation Award

Sponsored by: Kier

Winner: Midas - St John's Hall

The Grade II Listed St John's Hall has been an iconic structure in Penzance for hundreds of years. When the imposing building needed revitalising, Midas Construction undertook an innovative renovation project to safeguard the hall and its historical contents.



Project of the Year- Building

Sponsored by: EDF Nuclear New Build

Winner: Alec French Architects - City Hall, Bristol

City Hall, Bristol is a Grade II* building commissioned by Bristol City Council as its corporate HQ in the 1930's. It has been comprehensively remodelled internally to create a contemporary and agile working environment for staff and partner organisations with increased public access.



Project of the Year- Civil Engineering

Sponsored by: WSP

Winner: Skanska UK - Beer Wall Flood Alleviation, Phase 3

Phase 3 of this scheme involved the excavation of two new river channels and installation of two large tilting weirs to connect the Sowy River and the Langacre Rhyne to the newly installed culverts upstream and downstream of Beer Wall, more than doubling the amount of water that can flow underneath the road.



SME of the Year

Sponsored by: Aquarian Cladding

Winner: Churngold Construction

Churngold Construction is the first-choice groundworker for many of its clients and has got into this enviable position by seeking to be the very best it can as a key member of its clients supply chains. Not only has Churngold invested heavily in training its staff with an average of over 6 days training a year per employee, it has developed a Groundworks Apprenticeship Scheme with local partners which has introduced young people to the industry.



Sustainability Award

Sponsored by: Structural Timber Association

Winner: Cornwall Council & Cormac Solutions - A390 Truro Western Corridor

The Truro Western Corridor package seeks to promote alternative modes of transport to an already congested road network within the expanding city of Truro. By complimenting the existing park and ride sites on either side of Truro, the TWC seeks to alleviate the pressures of a high number of education, employment and health sites which draw large numbers of daily commutes from the surrounding areas.



Value Award

Sponsored by: Galliford Try

Winner: Kier Construction Western & Wales - RUH Bath Pharmacy

The RUH occupies a 52-acre site, 1.5 miles from Bath and provides specialist, general acute and emergency treatment for around 410,000 people in Bath & North East Somerset, and surrounding counties. The Pharmacy is a central part of the Trust's services, providing drug treatments for wards and outpatient departments, and continuing care on discharge.



Young Achiever of the Year

Sponsored by: Kingston Barnes

Winner: Daniel Baggott - BAM Construction Western

Daniel's work stands out from the crowd because it is rare that an individual in the early stages of their career can have such influence over core business systems that have been in place for decades. He has influenced long standing industry professionals to adopt new and challenging technology in a relatively short period of time.



The 2017 South West Construction Summit

Bringing together the regional construction industry and its supply chain.



The South West Construction Summit returned for its third consecutive year on 09 June 2017 at Ashton Gate Stadium, Bristol. Over the course of the day, almost 300 delegates had the opportunity to listen to a host of industry experts discussing key themes including; skills, image, sustainability and productivity in construction.

The attendee profile at the South West Construction Summit included some highly influential professionals, creating a rare opportunity to connect with the hardest to reach decision makers within the South West built environment.

Andrew Carpenter, Chief Executive of Constructing Excellence South West chaired the day with inspiring and informative presentations from a range of speakers from across the industry.

The first session of the day was on 'Skills & Image', with presentations from; Mike Borkowski – Southern Construction Framework, Leif Tarry – CITB, Rachel Bell – Stride Treglown & Women in Property, where topics included; the skills gap, construction as a careers choice and gender diversity.

Shortly after a refreshment break and networking with the events exhibitors, the second session kicked off with the theme of 'Productivity'. Contributors to this session were; Alexis Field – Highways England, Nathan Waller – Natwest Bank, John Boughton – Willmott Dixon and Dominic Thasarathar – Autodesk, where topics included; the clients role in continuous improvement, early collaboration between funders and developers and achieving values through efficiencies.

After delegates refuelled with lunch, the final session on 'Sustainability' took place with presentations from; Emma Osmundsen – Exeter City Council, David Sutton – EDF Energy and Councillor Paul Smith – Bristol City Council. This main topics of this session were; delivering sustainable energy efficient public buildings, a case study on Hinkley Point and tackling Bristol's housing crisis.

The summit speakers strongly emphasised that change must come from within and that everyone has a part to play. Professionals within sector are key to making improvements and crucial in building an even stronger South West construction industry.

The South West Construction Summit will return for its fourth year on 22 June 2018.



Current Members

CE National Members





CESW Regional Members

ADP Architects	Faithful & Gould	Quantec
Aedis	Falmouth Exeter Plus	Richard Jackson Ltd
Aldermore Bank	Foot Anstey LLP	Rider Levett Bucknall UK Ltd
Aquarian Cladding	FPCR Environment and Design Ltd	
ARV Solutions	Frame UK	
Ashfords LLP		Safety In Design
Atkins Global Ltd	Gilbert and Goode Ltd	Sam Gilpin Demolition Ltd
Austin-Smith:Lord LLP	Gilpin Demolition Ltd	SLR Consulting Ltd
Augmentum Ltd	GJR Architects	South West Water
Aspire Europe	Glen King PR	Southern Construction Framework
Astron Fire and Security		SPS Envirowall
Atkins Global Limited	HAB Housing Ltd	SRA Architects
Austin-Smith:Lord LLP	Halsall Construction Ltd	ST1 Consulting Ltd
Augmentum Ltd	Hammonds Project Management Services Ltd	Stride Treglown
Autodesk Ltd	Herbert H Drew & Son Ltd	
	Hexpod Ltd	T Clarke Contracting Ltd
Babcock Support Services Ltd	Hilton Barnfield Architects	Taylor Wimpey
Baker Ruff Hannon LLP	Hydrock Consultants	TDS Midlands
BAM Construction		Teal Consulting Ltd
BDP	Interserve Construction Ltd.	Trewin Design Architects Ltd
E W Beard Ltd		Trowers & Hamlins
Bevan Brittan LLP	Keystone Law	
Bond Dickinson LLP	Kier Construction Western and Wales	University of Exeter
Bournemouth Borough Council	Kier Living South West	University of the West of England
Bouygues UK Ltd	Kingston Barnes Ltd	
Bradford Group	Knightstone Housing Group	Verto Construction Ltd
Brandon Hire Ltd		
Bristol Airport	Lacey Hickie & Caley Ltd	Welink Energy (UK) Ltd
Bristol Water PLC	Lavigne Lonsdale	Willmott Dixon Construction Ltd
Bouygues UK	Lean Construct Ltd	
		Yarlington Housing
C G Fry and Son	Mann Williams	Young Black IS Ltd
C&P Plastering Contractors Ltd	Merlin Housing Society	
Campbell Reith Hill LLP	Michelmores LLP	Partners
Cavanna Group Ltd	Midas Construction Ltd	CIOB
Coastline Housing	M J Church	CITB
Cogent Consulting	Modularwise	RIBA
Constructing Excellence Wales	Morgan Sindall Construction & Infrastructure	
Construction Total Solutions Ltd	Morris Owen	Individuals & Students
Cormac Solutions Ltd		Abigail Scott
Cornerstone Housing	Nash Partnership	Martha Ines Ortegon Cervera
Cornwall Environmental Consultants (CEC) Ltd	NatWest	Mthulisi Mdluli
Crest Nicholson PLC	NVB Architects	Stacey Heath
Curo Group		
Currie & Brown UK Ltd	Ocean Housing Group	
	Oneserve	
Devon and Cornwall Housing Ltd		
Devon Contractors Ltd	Pinewood Structures Ltd	
Dodd Group (South)	PlanGrid	
Dowlas UK Ltd	Plymouth City Council	
Dribuild Ltd	Plymouth Community Homes	
Dunstan Consulting	Priddy Engineering Services Ltd	
	Project Entity Ltd	
Ebsford Environmental Ltd	Provelio Ltd	
Eliot Design & Build Ltd	PRP Architects	
Eton Environmental Group Ltd	PRS Group	
Exeter City Council	Purpol Marketing Ltd	
Expedite Project Services Ltd		

Clubs (Administered by the regional centre)

Bath

BPE Solicitors
Buro Happold Ltd
Constructing Total Solutions Ltd
Curo Group
Dribuild
Integral Engineering Design
Interserve Construction Ltd
Kersfield Developments
Kier Construction
MEA Consulting
Merlin Housing Society
Mogers Drewett
Nash Partnership
Nicholas Pearson Associates
Project Entity Ltd
RISE Management Consulting Ltd
Royal United Hospital Bath NHS Trust
Simpson Lynch & Co Ltd
Stone King
Temple Bright
The Osborne Group Ltd
Triodos Bank
Turner Townsend Suiko
Western Building Consultants Ltd

Cornwall Hub

Acorn Blue
Building with Frames
Cormac Solutions Ltd
Falmouth Exeter Plus
Foot Anstey
Gilbert & Goode Ltd
Hewaswater Ltd
Hoare Lea
Lavigne Lonsdale
MLM Consulting Engineers Ltd
Royal Cornwall Hospitals Trust
Stephens Scown LLP
T Clarke Contracting Ltd
Trewin Design Architects Ltd
Verto Construction Ltd
Welink Energy (UK) Ltd
Wheal Jane Enterprise t/a Carnon Contracting
WSP

Dorset

Bournemouth Borough Council
Currie & Brown
Greendale Construction Ltd
Herbert H Drew & Son Ltd
Morgan Sindall
Project Entity Ltd
Reeves James
Savills UK Ltd
Scott Walby LLP
Services Design Solutions Ltd
Set Square UK
Space Industries Ltd

Somerset

Bridgwater & Taunton College
Campbell Reith Hill
Harper Construction Recruitment
Hexpod Ltd
Kier Construction
McCarthy & Stone
Melhuish & Saunders
NatWest Real Estate
Safety in Design
Setsquare
Somerset College
TDS Midlands

Swindon & Wiltshire

M J Church
Purpol Marketing
SLR Consulting Ltd
Teal Consulting Ltd

Value through quality

Delivering architectural projects throughout the SW in close collaboration with contractor and end-user clients. NVB are specialists in education sector developments. We also have an expanding portfolio of commercial, community and leisure commissions both in the UK and overseas.



NVB Architects
ROOK LANE

Rook Lane Chapel
Bath Street, Frome
Somerset
BA11 1DN

01373 468030
mailto:mailbox@nvbarchitects.co.uk