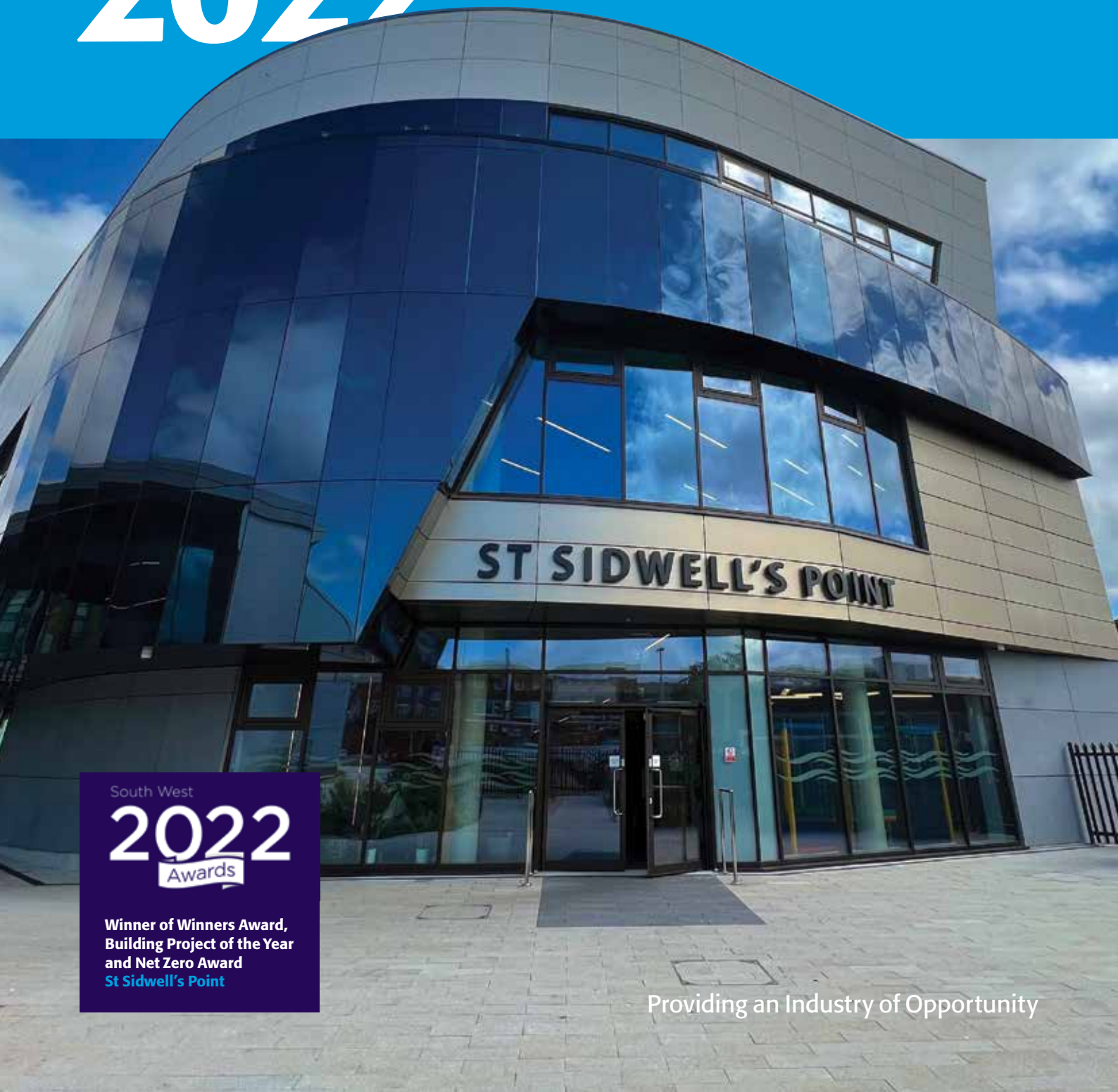


Annual Review 2022



**CONSTRUCTING
EXCELLENCE**
South West



South West

2022
Awards

Winner of Winners Award,
Building Project of the Year
and Net Zero Award
St Sidwell's Point

Providing an Industry of Opportunity

Contents

Reports

Chairman's Report	2
Chief Executive's Report	4
CESW Board	6
LeadersMeets	8
Diploma in Collaboration in Construction	10
Marcoms	12
PR Results	14
G4C	16

Clubs

Bath Club	18
Bristol Club	20
Cornwall Hub	22
Devon Club	24
Dorset Club	26
Gloucestershire Club	28
Somerset Club	30
Swindon & Wiltshire Club	32

Theme Group Reports

Building Safety	34
Climate Crisis	36
Future Skills	38
Smart Construction	40

South West Awards 2022

Awards 2022 Shortlist	42
Awards 2022 Winners	44
Awards Judges & Sponsors	46

Members

Club & Regional Members	48
Industry Members, Partners & Stakeholders	50
National Members	51

What is Constructing Excellence?

Creating an Industry of Opportunity	52
-------------------------------------	----



Dan Macey Chairman

Chairman's Report



With a unanimous decision for my consideration as post of becoming the new Chairman, approved by the existing Governance Board of Constructing Excellence South West, I felt extremely privileged to accept. I was delighted that my contributions as an existing board member and within the industry were recognised and appreciated to suggest elevating me for this position.

The conclusion to accept was also made easier by knowing that CESW retained an exceptional board of industry wisdom, with a wealth of esteemed colleagues who have volunteered their valuable time for the greater good of the construction sector, **collaborating** and **sharing** their vast **knowledge**.

What would my tenure look like over the two years from the appointment in November 2021, as we slowly started to see a recovery from Covid yet still retained in a world of uncertainty and drastic changes created through our reactivity during a global pandemic? Was this a sign of times changing indefinitely as we establish new ways of working and communicating to continue a drive for **improving the performance** of the industry and **influencing the change agenda**?

Was this a time that forced many to **Rethink Construction** by easing off, re-evaluating their personal goals and business plans and resetting for a different future? One thing is for sure, it was going to be challenging and that couldn't be any further from the truth as we look back 12 months on.

The Annual AGM highlighted that whilst seeking to exit one crisis, we faced further crises ahead as planning departments remained stretched, the reform was put on the backburner, and we lacked a positive trajectory in housing delivery exacerbating the need for affordable homes. Yet a Government abolition of the 300,000 target, and the climate crisis further indicating the need to intensify our decarbonisation plans of existing buildings, further signifies the need to reduce embodied and operating carbon in our new developments all whilst facing inflation, a lack of material and labour resources, and further uncertainty of lending and insurance with immense risk mitigation.

A challenge faced by many organisations within our industry and the realisation that coming together and collaborating will show signs of **solidarity and strength**. The CESW Board did exactly that by committing valuable time at a Board away day on the 6th of December 2021, seeking clear priorities with a tangible action plan for how best to utilise the finance and knowledge resources available within the membership.

The board offered their **commitment** and accountability through an array of engagements whilst retaining their place within the core structure of our leadership. We wished to ensure our productivity within was **industry aligned** and remain a collective and **bonded diverse group** still with the desire to **strive for change**. The future was to be **brave**, we needed to reset and re-evaluate our focus.

As we searched for the next level, we made fundamental changes to reflect this by aligning our **Focused Theme Groups** by reducing these to four, with characteristics of the sector demands. Our Sustainable and Innovation Group proficiently led by Phillipa Garnett became the **Climate Crisis** Group as an overarching approach to Net Zero 2050 now chaired by her successor Imogen Snell, also from Buro Happold, as we congratulate Phillipa with her firstborn.



For more information please contact dan.macey@holistichousingsolutions.co.uk

We introduced our new **Future Skills** Group which is dedicated to the acceleration of construction skills with a vibrant committee all with the common goal of the cause for growth and encouragement of the next generations. We retain the importance of **Building Safety**, which Richard Kochanski has successfully run, leaving a legacy as he steps down to make way for Liz Bennett of Safety in Design to continue as our newly appointed Chair. Last but not least, MMC, Innovation and Digital remain focal for the growth and revitalisation of productivity and we are pleased that Mary Bennell of the South West Procurement Alliance retains her chair post of **Smart Construction** for yet another year of advantageous collateral. The CESW Board also agreed that **EDI, H&WB** and **Procurement on Value** were extremely significant to us and overarch all our actions within.

Our **eight Regional Clubs** are a vital source of local connectivity and networking and, without the dedication of our Club Chairs, it would not be possible to achieve the outcomes that many have been privy to throughout their Club or Regional membership. More can be discovered about each further into this annual review.

There has never been such a greater need for the encouragement of our GenZ for the future of our industry, one in which CESW aims to better our image and encourage all demographics across our communities. This true whether it be a high-level achiever or someone who is academically challenged, as an industry that plays significance to the UK economy and with over 180 roles within it. Opportunities are abundant and progress and earning potential is substantial.

Our **Generation 4 Change (G4CSW)**, led impeccably by Lizzy Painter of RWK Goodman, has encouraged many young professionals into networking events combined with a collection of excellent Podcasts which breed new life into the sector with energy, passion and new visions.

I reach out with extreme gratitude to all of our Board, Club and Theme Chairs and their committees without whom we would not have achieved the delivery of the successful collateral to our members and the wider industry.

Extreme thanks must also be attributed to Andrew Carpenter, who many know for his passionate and enthusiastic personality which he has given to CESW since his involvement in establishing it back in 2003 and his role as CEO for the past 9 years. Andrew's final day with CESW is marked as November the 24th 2022, the day of launching this annual report in Taunton. He will be maintaining his involvement with Constructing Excellence as CEO of CE Midlands through which he will continue to sit on the Constructing Excellence Regional Partnership Board.

Andrew's contribution to CESW has been significant. There is no doubt that CESW's membership, profile and success within the construction sector and across the supply chain are down to Andrew's energy, enthusiasm, knowledge, contacts and sheer passion for **best practice**.

On behalf of the CESW board and our members, I would like to take this opportunity to thank Andrew for his many years of dedicated service. We look forward to growing and developing CESW further for the benefit of our members and the wider construction industry.

CESW continue our approach of **brave** movements through the unknown, whilst considering any preparation needed for an expected recession in 2023, albeit extremely difficult to predict the impact severity and its duration. This will be reflected in our restructuring and operational streamlining ensuring that our associates retain exceptional value through their membership.

I would like to thank all our **loyal members** who have retained their financial and physical active involvement throughout our journey, especially through times of financial hardships, and welcome new organisations who have joined us recently and look forward to new concepts and ideas being shared for the **greater good of the industry** as we continue harmoniously with strength and encouragement for the **future generations** of our industry.

CESW welcome our members to give as much feedback to the organisation by joining us at our regional and local club events both physically and virtually, sharing your thoughts and ideas whilst taking away those of others which will be fundamental to a continuation of learning. It has always been my mantra that the more you put in, the more to get out of your membership, and I stand by the fact that Constructing Excellence South West has undoubtedly given me that.

I very much look forward to the **brave choices** ahead and welcome anyone who wishes to **join the cause**.



Andrew Carpenter Chief Executive

Chief Executive's Report



I write my final Annual Review for CESW with mixed feelings in that I'm both very sorry to be leaving an organisation that I helped create in 2003 but happy that I leave an organisation in a very strong position both in terms of membership and influence.

It was in 2003 that Tom Harper, Mark Giltsoff, Trish Johnson and I worked together as a 'gang of four' to create Constructing Excellence South West. The launch took place at Somerset County Cricket Ground and so it's fitting my farewell performance will take place at the same venue. My involvement in the early years was restricted to the organisation of the annual awards until in 2013 I was asked to become Chief Executive. At that time we had come out of a severe recession and in effect there was no regional body – only three clubs in Bristol, Gloucestershire and Plymouth, all of whom had managed to weather the storm of the recession.



My first job was to create a structure that would provide a sustainable organisation going forward. To do this I asked key figures from across the South West supply chain if they thought we needed CESW, if I was the man to lead it, whether they would sit on the board and also pay for the privilege! I'm delighted to say we got a very good list of volunteers, and the rest is history, so they say! Of that original board I would like to pay tribute to our inaugural chair and vice chair, Rob Knight and David Renwick, and the only board member still standing Andrew Goodenough for their vision, support and dedication. We owe them a huge debt of gratitude as it is upon their foundation, we see the successful organisation today that is CESW.

The next job was to build on the aforementioned three clubs by breathing new life into Cornwall, Devon & Exeter, Dorset and Swindon & Wiltshire Clubs and create new ones in Bath and Somerset. The Plymouth and Dorset & Exeter Clubs have of course recently merged. I thank all the club chairs over the years for their huge contribution in ensuring the two-way communication with the construction industry coalface and the ability to provide two-way communication channel for best practice.

It was important that CESW was not a 'talking shop' and we were able provided best practice collateral that could be used by the industry at large to improve the performance of the UK construction industry, which was of course our elevator pitch whenever we were asked 'what does CE do?'

To do this we set up a series of working Theme Groups, initially nine subsequently reduced to six and now further reduced to four. They have worked tirelessly over the years to identify gaps in knowledge and then bring together experts to fill those gaps and provide best practice documents that may be used throughout the sector. I am in awe of the knowledge and time Theme Group members have been prepared to share with CESW to provide this excellent collateral. I would like to place on record my personal thanks to Martyn Jones who got the ball rolling in 2014 with our first documents on procurement best practice and who has been the driving force behind their success ever since.

The origins of Rethinking Construction have always concentrated on making our sector a better place to work and with this in mind we set up our own G4C movement for those of thirty-five and under i.e., our future leaders. Over the years we have had a succession of chairs, all committed to the cause, and this is very much the case now with Lizzy Painter building on the success of Lisa Denby in providing a vibrant group of young professionals all committed to the principles of collaborative working. The recent highlight has been a series of podcasts arranged by the group to promote construction as a career. In addition, for three years, thanks to the generosity of Southern Construction Framework we ran a very successful Adopt a School campaign to improve the image of construction and promote it as a career of choice.

Over my nine years as Chief Executive we have organised several very successful conferences, summits, workshops, webinars, podcasts and of course Awards ceremonies all dedicated to showcasing best practice and providing networking opportunities for like-minded forward-thinking people all of whom who share our best practice principles and passion for change. I will miss my involvement with CESW but will maintain my interest from afar as a member of the Constructing Excellence Regional Partnership in my capacity as Chief Executive of Constructing Excellence Midlands.

For more information please contact andrew.carpenter@cemidlands.org



I conclude this review by wishing Dan Macey and the current board all the very best in taking CESW onwards and upwards. It's time for my baby to fly the nest and I know I leave the organisation in excellent hands. I look forward to seeing it mature and blossom as its membership and influence grows still further. As I've said for nineteen years, the only constant in life is change and now that change includes my departure.

I thank all members, both old and current, for their support, dedication and sense of humour. We've built CESW on trust and goodwill and those values will stand the organisation in good stead going forward into an even brighter future.

Thank you.



CESW Board



What does CESW mean to me?



Dan Macey *Chair*
Director/Owner, Holistic Housing Solutions Ltd

I have a burning desire for the betterment within the sector, to further advance my learning and to encourage our younger generation to see the vast opportunities available in an evolving industry. I have recently been more involved in the holistic aspects of development, which has been a real eye-opener to the immense daily challenges and delays faced by our contractors which further enthruses me to ensure that 'new choice' is readily available to bring much-needed improvements to a 'future valued living'.



Emma Osmundsen *Vice Chair*
Managing Director, Exeter City Living

I have been involved with CESW for 7 years, two years of which I served as Chair, and I'm currently the Vice Chair. I am passionate about the leadership role Construction can play in creating a more sustainable planet. CESW with its diverse membership from within the property and construction sector is a great space for learning from others, sharing best practice and influencing others to adopt low carbon practices.



Andrew Goodenough *Vice Chair*
Infrastructure Director, Bristol Airport

As a founding board member of CESW I became involved to promote collaboration and best practice in the construction industry. The construction industry historically has become a race to the lowest cost, however this practice often promotes poor behaviours and indeed unwelcomed surprises for clients (including Bristol Airport). CESW is the vehicle that I have chosen to try and make a difference and showcase how things can be done with an alternative approach.



Lisa Broom *Treasurer*
Senior Development Manager, Homes England

Having joined CESW over 10 years ago, I have enjoyed the passion and commitment shown by fellow professionals in our drive for excellence and opportunity within the construction industry. Through my participation, I have found CESW to be a great place to collaborate on the issues that matter to the industry, to share and enhance my knowledge, and most importantly, to influence positive change through the promotion of diversity and inclusion within the construction industry.



Anna Wood *Company Secretary*
Partner, Michelmores

As a solicitor advising on construction procurement and disputes it would be easy to spend my career behind a desk disconnected from the sector I work to support. I joined CESW to widen my network and have the opportunity to listen to and learn from contractors and consultants (other than my own clients!). CESW remains a valuable organisation for me for meeting people and keeping my knowledge up-to-date.



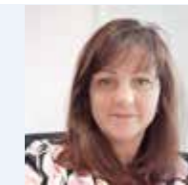
Andrew Ferguson
Gallagher

I've been involved in the Bristol Insurance market since the late 80s. The opportunity to get involved in CESW came up in the pandemic. I'm lucky to have some great, knowledgeable support both within Gallagher where construction is a successful specialism of ours but also here at CESW where I've already found many like-minded people who just want to give back. Outside of work when I'm not entertaining my 11 year old boy you'll see me at live music and sports events here and abroad.



Kevin Harris
Bamboo Technology Group

Being an active board member of CESW has certainly provided me with an incredible opportunity to meet influential, collaborative, and well-connected people, and our company membership has opened up relationships with multiple organisations, strategic partners, and leaders from across the sector.



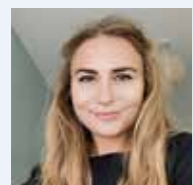
Carol Heneghan
Bouygues

I've been a part of CESW for over 10 years. For me there are three key things it brings; networking, knowledge and collaboration. The networking is key to making the connections across the wide spectrum from clients and their teams through to supply chain members. Knowledge and collaboration come hand in hand for me – being able to bring members together with specific skills and knowledge to make the fantastic industry we work in more resilient and ready for the future is hugely important for me.



Robin Jackson
Managing Director Taylor Lewis

Managing Director and owner of Taylor Lewis, I have been a member of Constructing Excellence for 6 years and was asked in 2020 to sit on the South West Board. My passion and commitment about ensuring the sector attracts the next generation of construction workers and upskilling existing professionals goes hand in hand with CESW's unfaltering reputation in the marketplace providing platforms for individuals and companies to engage, network and thrive.



Lizzy Painter *Chair G4C*
RWK Goodman LLP

As a construction & engineering law specialist at RWK Goodman LLP, my involvement with CESW and G4C stems from my desire to understand how the industry functions in practice and help drive change. I recognise CESW as a vital organisation for promoting collaboration, best practice, and accountability. I look forward to helping CESW and G4C continue to support their members and encourage the next generation to join the industry. It's an exciting time!



Helen Baker
Director of Procurement, UWE

I joined the board with the dual objectives of championing equality, diversity and inclusion across the construction disciplines and use my role as Procurement Director at UWE Bristol to connect the next generation of students to CESW members throughout the region.



James Beckly
Managing Partner, Ward Williams Associates

I'm Managing Partner of Ward Williams Associates, a national multi-disciplinary construction consultancy. As a board member of Constructing Excellence South West, I believe that the future of the construction sector and the significant challenges it faces will only be changed through a diverse set of partnerships and the use of non-adversarial procurement strategies; as frankly, the old models aren't fit for purpose. CESW is an opportunity to collaborate and share innovative practices and ideas from within and outside our industry, to ensure we are a force for positive change across the three pillars of People, Places and Planet.



Kingsley Clarke
South West Region, SCF

I'm delighted to have joined the CESW board and be part of a community that champions and supports our vibrant construction industry across the south west region. Both CESW and SCF share a central ethos of collaboration and it is this spirit that I want to bring to my place on the board, along with looking forward to creating new relationships and sharing ideas.



Jonathan Davis
Managing Director, Powerhaus UK Ltd

A lot of my life in construction has been about the 'race to the bottom' to compete for work. Changing behaviours, educating stakeholders and demonstrating best practice left me feeling weary and isolated. Then I discovered CESW and realised there are many of us trying to do the right thing and build better, more enjoyable, sustainable and flexible spaces. CESW is leading the way with an open and inclusive approach that makes me proud to be part of the construction industry. I can attend workshops, webinars and social events to be with people who get it and want to enjoy doing it.



AJ Eaton
Bell Group

I am the Decarbonisation and Energy Solutions Director at Bell Group, which specialises in all aspects of property maintenance and refurbishment. I have been involved with CE for over 20 years. CE is an important part of my and Bell's philosophy in the way we undertake our business. It provides access to best practice that helps us to develop our offer in the decarbonisation arena. In addition to my CESW board role, I am also chair of the award-winning Green Construction Advisory Panel (GCAP), working with the housing sector to deliver green skills and employment opportunities.



Paul Read
Magna Housing

My experience spans working in house builders, contractors and client side in the affordable housing sector. My belief is that client leadership is the catalyst and enabler of the change we need. Constructing Excellence is awash with great examples of client side leadership enabling great teams to do great projects. Using the routes to procure the best organisation in the construction sector is key to this work as we move into a decade where need to have transformed and innovated for a net zero construction future embracing and refining our operating and delivery models.



Paul Richards
Aquarian Cladding

I joined the construction industry in 1986, starting with counting bricks and timber for a merchant. Rising through the ranks to become a director, I gained an invaluable education working with people at every professional level. Good communication and people skills are the foundation of how I now run Aquarian Cladding Systems, which I founded in 2007. Ensuring a good understanding of our role in the supply chain, I support the whole team in striving for excellent technical, commercial and logistical support. I bring this knowledge and experience to the CESW Board and I am an advocate of MMC and collaboration.



Robert Sargent
Stride Treglown

Innovation is best delivered in partnership. My role is to lead innovation at Stride Treglown so those who design, build and use architecture benefit from positive impact. CESW is represented by a wide range of disciplines, aligned through a vision for a better industry. An ideal vehicle to deliver widespread positive action across industry.



Gemma Welshe
Willmott Dixon

I have been a member of CESW Board for 3 years and during that time I've seen the impact that global crises have had on construction as a whole and across the south west. It's a privilege to be part of such a collaborative and innovative organisation that is committed to making changes from within the sector, supporting those who are already working in construction and attracting the next generation. We are facing increasing challenges in the industry, which I believe our members continue to meet with resilience, flexibility and passion.

Howard Betts CEO, LeadersMeets

LeadersMeets



At LeadersMeets we are now well into our third year of hosting the CE Noon Webinars on a Friday, having in this time now hosted over 150 webinars.

Since we began in March 2020 over 5,000 people have registered for one webinar or more and we communicate on a weekly basis with some 3,500 people on our database about upcoming webinars as well as other activities e.g. occasional articles and surveys on relevant topics of interest.

The webinars began in response to the Covid-19 lockdown and were an opportunity for those not working on a Construction site but working from home (WFH) to learn, maintain, and update their knowledge and learning on industry relevant key topics.

Whilst people have now returned to work the post-Covid model of work is not the same model as it was before, for WFH is now a part of a new hybrid model of working that presents a number of challenges to both employer and employee.

One such challenge is the need to learn and develop ones knowledge and skills, so how have we faired in supporting that?

- Some 84% of people say that 'the webinar held their interest'
- Just over 70% said 'they were encouraged to participate'
- Over 90% thought 'the content was relevant to their work'
- Nearly 90% considered that 'what they learned will help them in their work' and
- Just under 85% said that the 'would recommend the recording to others'

Webinars continue to provide the most convenient way for people to learn and improve their knowledge and understanding in a world that will continue to change: Discontinuity is a feature that is here to stay.

The Construction Sector today is facing a myriad of issues that include (in no particular order):

- Recession
- Inflation
- High interest rates
- Low investment
- Increasing legislation
- Supply chain problems
- Shortage of people entering the sector
- Skills shortage
- Flat-lined productivity
- Low investment in technology
- Net Zero and
- The demographic issues of an ageing workforce.

There are 12 issues here, all of which could and should make vital webinar topics where real 'conversations that matter' can take place that will foster learning and more importantly action. The Construction Sector has a long history of 'talk and little action' a major reason why its contribution to national productivity is at best flatlining or even falling year on year and why it is not embracing the use and development of AI and technology.

Webinars can, and do, bring people together quickly and conveniently without the need to travel that is costly in time as well as saving the need to burn fossil fuels.

This year the decision was taken by the Webinar partners to reduce the webinars from weekly to monthly. With the need to embrace the above challenges through learning and change the most must be made of the one planned webinar a month – though space can be found for more.

We look forward to welcoming you and importantly if you think you have an important idea or contribution please do contact us so we can discuss how we can give you the space to lead a webinar that may help change the sector.

For more information please contact howard@leadersmeets.com

AN INTRODUCTION TO THE PRODUCT PLATFORM RULEBOOK
 Friday 13th May at Midday
 A webinar for anyone interested in learning more about how product platforms might change the way we deliver programmes against the £5.5bn National Infrastructure and Construction Pipeline

CYBER SECURITY IN THE CONSTRUCTION SECTOR
 Friday 9th September at Midday
 Johny Morgan, Head of Cyber Risk Management at Gallagher will discuss why the construction sector presents a lucrative target for cybercriminals.

OWNING THE WHOLE, LEADING IN UNCERTAINTY
 Friday 30th September at Midday
 Mark Wild will share insights and lessons learned from getting Crossrail, Europe's biggest construction programme, over the line.

CARBON ACCOUNTING & NET ZERO IN CONSTRUCTION
 Friday 14th October at Midday
 March's ground-up carbon accounting team can help you gain visibility and take control over your carbon emissions

DIABETES THE HIDDEN RISK FOR HEALTH SAFETY AND PRODUCTIVITY
 Friday 18th Nov at Midday
 Diabetes affects 1 in 12 people. It is the leading cause of blindness in the working population and there are 170 amputations a week. This webinar is for anyone managing people at work.

WHAT IS ESG AND WHY DO I NEED TO ACT NOW?
 Friday 11th Nov at Midday
 Tom Pogson will provide a back to basics review of ESG (Environment, Social and Governance) what it means for you and your organisation and the benefits it can provide

LEVELLING UP REGENERATION AND THE ROLE OF THE PUBLIC SECTOR
 Friday 18th March at Midday
 This webinar will be a great opportunity to talk about the levelling up agenda the key role the public sector will play. For anyone interested in regeneration and the levelling up agenda

INSURANCE BACKED ALLIANCING THE IPI MODEL
 Friday 11th March at Midday
 A new way of thinking - a new process that already delivers on the PACE and all other aspects. Something that is true collaboration and integration with no right to subrogation, shared risk and reward.

DIVERSITY EQUILITY & INCLUSION: MINIMISE RISK AND MAXIMISE POTENTIAL
 Friday 1st April at Midday
 How to attract and retain talent to maximise potential performance of your organisation. How to manage structural bias and unconscious bias.

CITB FUTURE SKILLS AND RECRUITMENT WITH SANDRA STEVENS
 Friday 8th April at Midday
 Sandra Stevens is a Customer Engagement Manager at CITB and an experienced Workplace Development Coordinator. Skilled in Business Planning, Customer Service, Coaching, Change Management, and Construction

RESPONSIBLE TIMBER SOURCING WITH CHARLES LAW
 Friday 22nd April at Midday
 Sustainable Construction Solutions works with organisations to develop their sustainability strategy. This webinar is on building resource efficiency and the responsible sourcing of materials, in particular timber, in a particular sector.

TRANSFORM YOUR STRUCTURAL TIMBER AND STEELWORK WORKFLOWS
 Friday 6th May at Midday
 Robert Hartman will introduce Autodesk Advance Steel in this webinar about Structural Timber and Steelwork modelling and automatic fabrication creation

BUILDINGMINDS THE ESG PLATFORM WITH A PLUS
 Friday 29th April at Midday
 Find a solution that can accelerate the achievement of your decarbonisation targets. How to go all the way from data collection to translating decarbonisation targets into action plans.

TIMBER AND THE CIRCULAR ECONOMY WEBINAR FOR SPECIFIERS
 Friday 20th May at Midday
 Sustainable Construction Solutions specialise in embedding resource efficiency and the responsible sourcing of materials, in particular timber, ultimately moving organisations towards a circular economy business model.

FUNDING MODULAR HOUSING WITH KATIE SAUNDERS
 Friday 27th May at Midday
 This session will analyse the results of the Treasury & Housing ECF survey on the use of modular construction for new housing and consider the commercial, technical and legal issues for investors and developers.

PROTECT YOUR BUSINESS WITH TRADE CREDIT INSURANCE
 Friday 10th June at Midday
 Find out how to protect your cash flow and reduce the risk of non-payment on your business from the risk of non-payment with Trade Credit Insurance. How can Gallagher Trade Credit & Surety help?

EVENT MANAGEMENT DO YOU NEED HELP?
 Friday 24th June at Midday
 Everyone goes to events, but how do you really manage them? How much does it cost to get one organised? Why should you get someone to organise your event? Managing big events can be more time consuming and costly than you think.

CONSTRUCTION MARKET ACTIVITY & OPPORTUNITIES WITH ALAN WILEN
 Friday 17th June at Midday
 UK construction has been buffeted over the last three years by major political and economic events. There are emerging pockets of construction activity. Gallagher's analysis and forecasts will help you identify the market opportunities and risks for your business.

WHY WOULDN'T YOU USE TIMBER IN COMMERCIAL BUILDINGS?
 Friday 1st July at Midday
 What are the opportunities for and barriers against the use of timber in the construction of commercial buildings? Interested in developing timber and the impact that it has technology can have on learning culture and

THE RISE OF AUTOMATION IN BUILDING DESIGN: CASE STUDIES
 Friday 8th July at Midday
 This presentation with Benoit Maddaloni will illustrate interesting applied research projects in line with the ongoing digital transformation in the construction industry.

WEYMOUTH SEAFRONT MASTERPLAN WITH WAYNE HEMINGWAY
 Friday 15th July at 10 - 11am
 Hemingway Design have been appointed to lead on the Weymouth Seaford Masterplan on CE. Don't miss out on this special event, award winning design. Wayne Hemingway to discuss the plans in this one of special webinar.



Howard Betts CEO, LeadersMeets

Diploma in Collaboration in Construction



“The UK construction knows the word collaboration but doesn’t have the necessary behaviours and culture to deliver it.”

Anonymous CEO

On the 4th October, 11 students from organisations across the sector collected their Diploma Certificates having successfully completed the very first Diploma in Collaboration in Construction. The journey for the students had started some 12 months earlier and was thus the culmination of studying through monthly online sessions. These sessions were led by subject matter experts drawn from across the sector and the submission of assignments that would be marked and finally benchmarked by the University of Wales Trinity St David.

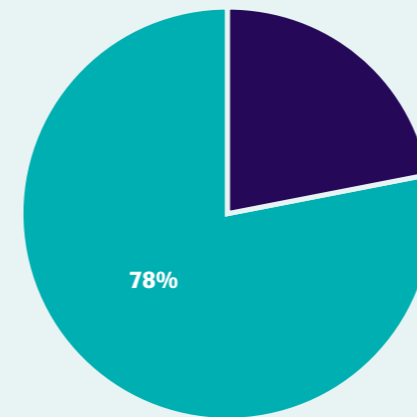
The idea of offering a Diploma in Collaboration to the Construction Sector came out of a discussion between four people some 20 months earlier. Report after report since the mid-1990s had outlined the necessity for, and benefits of, collaboration to replace the traditional adversarial culture of the sector and the importance of integrated supply chains to replace the fragmented nature of the sector.

Deciding to do it was to be the easy bit for whilst finding students was one challenge a further, and greater one, was delivering it. A syllabus and tutors were easily put in place but the academic partner pulled out just as the programme begun. Fortunately there was past academic experience to draw upon with The University of Wales and Trinity St David being found who were keen to participate. Thanks to all of the contributors and the University, the new Diploma programme was delivered with as much learning being undertaken as the students.

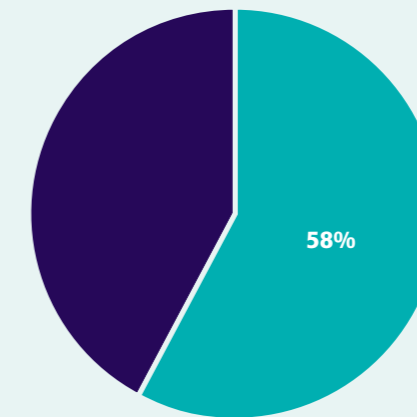
The aim now is to take the Diploma forward into a second course commencing in January 2023.

The last few months have seen much change in the economic fortunes of the country and construction sector. A survey carried out on the 7th August by LeadersMeets with their database of the construction webinars found:

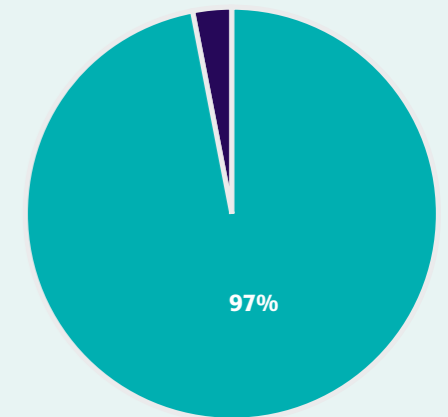
For more information please contact howard@leadersmeets.com



1) That some 78% of respondents thought that ‘due to the declining economic climate the sector will resort to confrontational behaviours’



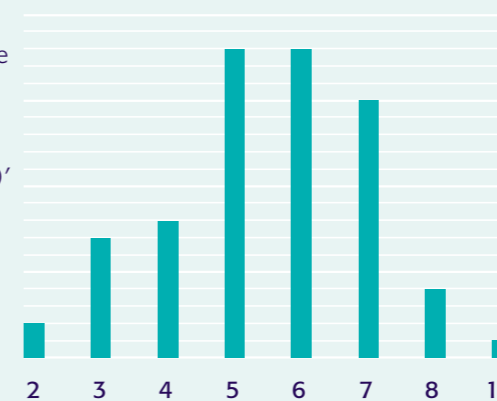
2) Some 58% thought there would be ‘a reluctance to share risk’



3) That 97% thought that ‘a greater understanding and learning by organisations across the sector will help them to embrace collaboration as an effective and successful way of working through this economic climate as well as for the future’

The evidence for the need for collaboration and the Diploma is compelling

4) That people did not rate the ‘level of trust in the sector as higher than 5.5 (out of 10)’
Average 5.5



5) Some 93% thought that ‘the joint problem-solving of working collaboratively as a positive way to work’
Average 9.3



Diploma in Collaboration in Construction 2023

Academically benchmarked by **CONSTRUCTING EXCELLENCE Midlands**

Collaboration
Leadership
Psychology
Sustainability
Process
Value
Integration
Design
Compliance
Management
Contract
Smart

GREENER • SAFER • SMARTER

Emma Hannam Digital Marketing Marcoms



Firstly, may I say a big thanks to all who have followed us on our social media platforms this year.

LinkedIn has gradually become the platform of choice in our industry and although we still have a lively Twitter feed @cesouthwest, we definitely see the majority of interactions with you on our LinkedIn page. So, if you haven't already, then get on board and follow us there to get involved.

Liking, commenting, sharing and reposting are all great ways to become part of the network of industry professionals that is CESW. Of course, we post all of our latest news and events on both platforms.

Our LinkedIn followers over the last 12 months have increased by 700 and our analytics show that people are twice as likely to be engaging with us on their mobile phone LinkedIn apps rather than their computers – no surprises there!

Our newsletter is still going strong and goes out on the first Tuesday of the month. I would certainly encourage members to send over your news if you would like to share it with the CESW network. Even though he's now retired, we still keep Martyn Jones a little busy as he continues to impart his knowledge and experience to us in the form of a very well written article every month for our newsletter.

Our PR company Purplex Marketing @PurplexUK have their own page in the Annual Review this year as they have been creating excellent press releases and video content for us for over a year now.

For more information please contact emma.hannam@constructingexcellencesw.org.uk



When it comes to what's new on the website, this year we are very pleased to have included a RED DOT link on our home page, which links to free mental health and wellbeing support available 24/7 for anyone who needs it.

Last but not least the CESW Awards are always a huge part of our focus during the year so James Carpenter, Gareth Hannam and I attended the Bristol awards again this September as a social media team to interview and film the winners so we could share the videos with you immediately on Twitter.

Once again it was an honour to hear from the winners themselves and an opportunity to see first-hand the passion, dedication and excitement that is so evident in the interviews.



- LinkedIn** - Constructing Excellence South West
- Twitter** @cesouthwest
- Website** www.constructingexcellencesw.org.uk



Constructing Excellence South West

Constructing Excellence South West is a progressive membership organisation committed to improving business performance
Construction - Frome, Somerset - 2,643 followers

Hannah & 3 other connections work here · 11 employees

+ Follow Visit website More

Home About Posts Jobs People Insights Videos

About

Improving the performance of the South West construction industry through collaborative working. We are the only cross-sector, cross supply chain member led organisation set up to achieve this ambition. Our core values focus on collaborative working, an integrated supply chain, procurement on b... see more

See all details

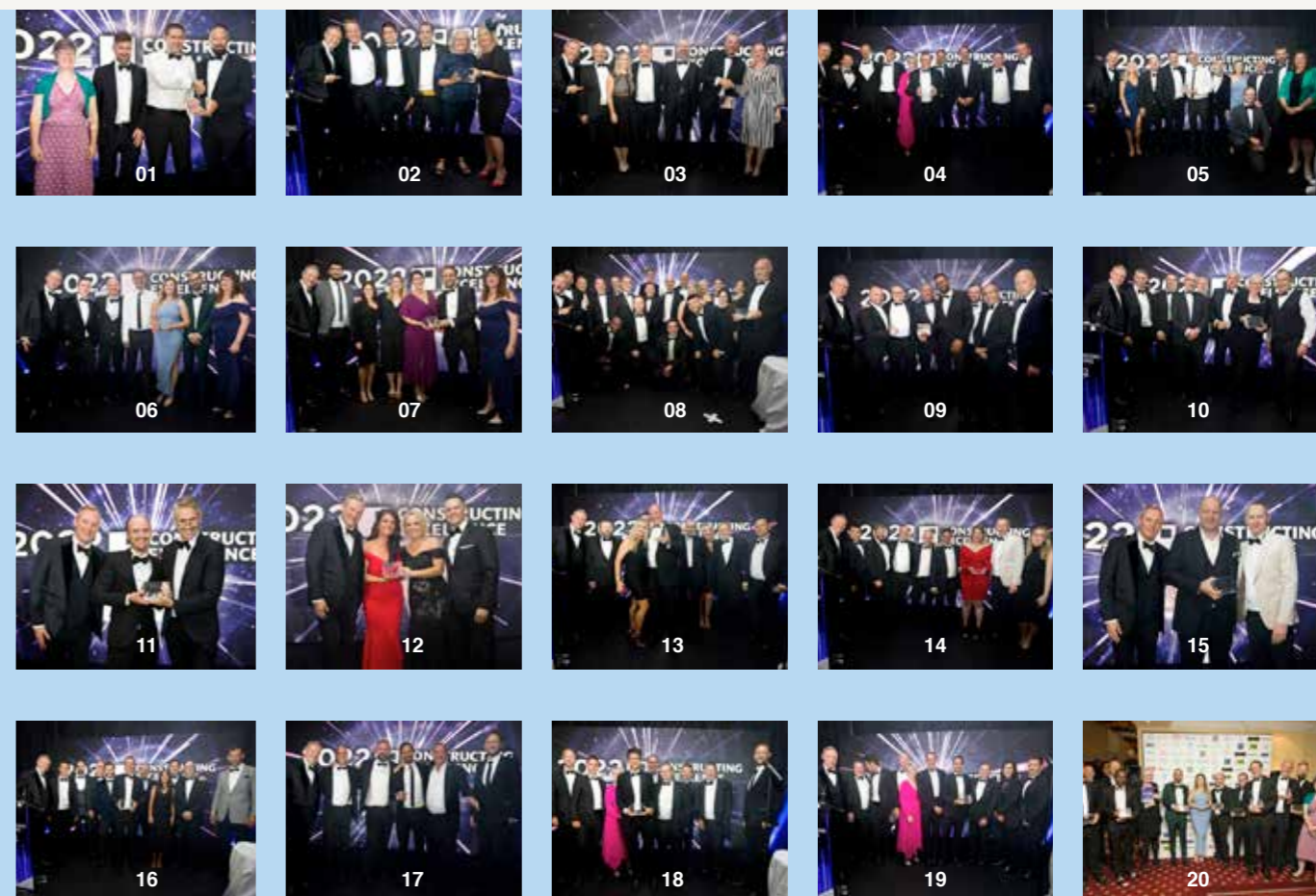
Page posts



September is "back to school" month and, I always find, a great opportunity to reflect on the calendar year so far, and to state new ambitions. For sponsors, most of us qualify in the autumn, and so for many the month marks a professional anniversary, in my case 12 years. I trained and qualified through a recession and spent much of my first year of qualified life helping clients to prepare for the legal changes about to come into force... [Keep reading](#)



A huge thank you to our sponsors of the CESW Awards this year. With the CESW Awards coming up THIS Thursday in Bristol, we want to say an enormous thank you to all the sponsors who have made this wonderful event possible again this year! We are very excited and look forward to seeing you all there on the night. [CLICK HERE](#) to view all the sponsors and categories.



Purplex Marketing PR Results



50 PIECES OF MEDIA
COVERAGE



2,653,651
COVERAGE REACH

26 ARTICLES

- 18 PRESS RELEASES
- 6 FEATURE ARTICLES
- 1 NEWSJACKING COMMENT
- 1 FEATURE COMMENT

20 EVENTS AND MEETINGS

SEPTEMBER 2021

- Building Products Construction & Skills Feature
- Construction's significant role in hitting net zero target

OCTOBER 2021

- Wellbeing dashboard to tackle mental health in construction
- Leadership at every level will ensure quality in construction

NOVEMBER 2021

- South West Construction Summit to highlight need for collaboration
- Revealed: One in 10 construction workers in the south west admit to poor mental health
- COP26: Newsjacking CESW
- Dan Macey appointed new Chair of Constructing Excellence South West

DECEMBER 2021

- Constructing Excellence South West Launches 2022 awards
- Industry leaders gather for crucial Constructing Excellence South West summit

JANUARY 2022

- Be part of construction's change agenda
- Constructing Excellence South West launches report to help attract younger generation to construction

FEBRUARY 2022

- Constructing Excellence South West reveals entry deadline extension
- Red dot mental health support lands on Constructing Excellence South West website

MARCH 2022

- Youth-in-construction podcast celebrates ten episode milestone
- Disrupt, challenge and collaborate: the sector's way forward in the wake of Midas
- Crucial construction summit sees business leaders set their sights on the future
- Constructing Excellence South West launches renowned leadership dinner series

APRIL 2022

- South West Construction Event: learning lessons from Europe's largest construction project
- Weston-super-Mare Construction Event: learning lessons from Europe's largest construction project

MAY 2022

- South West leading housing summit set to focus on climate change, construction planning and procurement on value
- Spotlight On: Hinkley Point – Europe's largest construction project
- Plymouth construction leaders meet for crucial conference

JUNE 2022

- Construction leaders discuss future of the industry at crucial meeting in Bath

JULY 2022

- Somerset construction leaders meet for crucial future of industry talks
- Crucial construction debates tackle key industry challenges

Headline	Magazine
Construction's significant role in hitting Net-Zero target	Building Products
South West Construction Summit to highlight need for collaboration	Building Products
	Glass Times
	PBC Today
	Business Leader
REVEALED: One in 10 construction workers in the south west admit to poor mental health	Building Products
	PBC Today
COP26 Newsjacking CESW	BDC Magazine
	PBC Today
	Building Products
Dan Macey appointed new Chair of Constructing Excellence South West	BDC Magazine
	Construction.couk

Headline	Magazine
Constructing Excellence South West launches 2022 awards to celebrate best practice in construction	Building Products
	Creative Build Magazine
	Building Specifier
Be part of construction's change agenda	Building Products
	Insight Index
New construction report reveals how to breathe new life into ageing industry	Business Leader
	Insight Index
'Red dot' mental health support lands on Constructing Excellence South West website	Building Products
Constructing Excellence South West reveals entry deadline extension for 2022 Award	Building Products
Youth-in-construction podcast celebrates ten episode milestone	Building Products
	Construction Update
Disrupt, challenge and collaborate: Moving forward in the wake of the Midas collapse	PBC Today

Headline	Magazine
Constructing Excellence South West launches renowned leadership dinner series	Building Specifier
	Insight Index
Crucial construction summit sees business leaders set their sights on the future	Business Cornwall
	Insight Index
South West Construction Event: Learning lessons from Europe's largest construction project	Building Products
	Insight Index
Weston-super-Mare Construction Event: Learning lessons from Europe's largest construction project	Insight Index
	Building Products
South West leading housing summit set to focus on climate change, construction planning and procurement on value	Construction.couk
	Insight Index
Spotlight On: Hinkley Point C – Europe's largest construction project	PBC Today
	Insight Index
Plymouth construction leaders meet for crucial conference	We are South Devon
	Insight Index
Construction leaders discuss future of the industry at crucial meeting in Bath	The Business Exchange Bath

PR COVERAGE HIGHLIGHTS

Disrupt, challenge and collaborate: Moving forward in the wake of the Midas collapse

Key takeaways from the report include:

- The construction industry is facing a period of significant change and challenge.
- The industry must focus on innovation, collaboration and resilience to overcome these challenges.
- The report provides a framework for the industry to move forward in the wake of the Midas collapse.

PR COVERAGE HIGHLIGHTS

South West 2022 Awards

Constructing Excellence South West has announced the winners of the 2022 Awards. The awards celebrate the industry's best practice in construction across various categories.

PR COVERAGE HIGHLIGHTS

Disrupt, challenge and collaborate: Moving forward in the wake of the Midas collapse

The report highlights the need for the industry to embrace change and work together to overcome challenges. It provides a clear path forward for the industry.

PR COVERAGE HIGHLIGHTS

Construction leaders discuss future of the industry at crucial meeting in Bath

Industry leaders gathered in Bath to discuss the future of the construction industry. The meeting focused on key challenges and opportunities ahead.

PR COVERAGE HIGHLIGHTS

South West leading housing summit set to focus on climate change, construction planning and procurement on value

The summit will bring together industry experts to discuss the impact of climate change on housing and how to address it through better planning and procurement.

PR COVERAGE HIGHLIGHTS

Crucial construction summit sees business leaders set their sights on the future

Business leaders from across the construction sector gathered for a crucial summit to discuss the future of the industry and set a vision for the years ahead.

Lizzy Painter Chair

G4C

For more information please contact
elizabeth.painter@rwkgoodman.com



◀ **Since April 2021**
Continued to produce our podcast series interviewing inspiring individuals in the industry. We now have 14 live podcasts.



◀ **Nov 2021**
Lizzy Painter presented our strategy at the CESW AGM, which gave us visibility and kick started lots of enthusiasm.



◀ **Dec 2021**
Constructing the Future report.

Jan 2022 ▶
Interview with Radio Gloucestershire.



Jan 2022 ▶
Breakfast event in Gloucester, to recruit G4C contacts and network.



May 2022 ▶
Breakfast event in Bristol, to recruit G4C contacts and network.



◀ **May 2022**
Presented our strategy at the Bath Club Leaders' dinner.



◀ **June 2022**
Stall at the Gloucester annual conference.

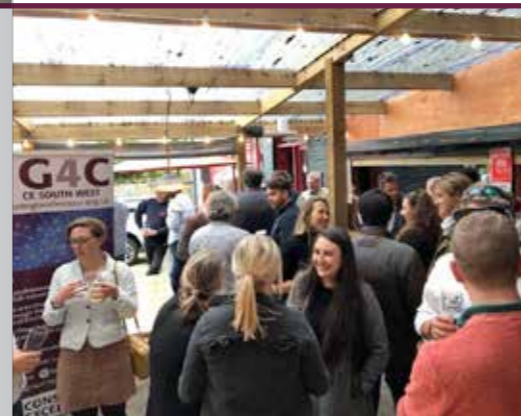


◀ **July 2022**
Hosted the Battle of the Builds careers event in Exeter.

July 2022 ▶
G4C contacts involved in Top Trumps of construction professionals.



Sept 2022 ▶
Evening event in Truro, to recruit G4C contacts and network.



Sept 2022 ▶
Talk at Weston College to introduce new students to G4C and CESW.

During the first few weeks of term our #Construction learners at Weston College met with Elizabeth (Lizzy) Painter and Francesca Lewis from G4C South West. Lizzy and Francesca gave our learners an insightful presentation about who G4C are as part of Constructing Excellence South West group. The learners gained an insight to G4C, its mission, membership and CFD opportunities. Thank you very much for your time. I hear our learners gained a lot from the session!

#G4C #CESW #Construction #BuildingChange #epc #creatingbrighterfuture #Buildtothefuture

David Lefevre Ben Hodder Richard Harvey Sally Goodall John Hall Kirsty Woods Lynsey McKinstry David Chew Lauren Smith Dan Macey Andrew Carpenter



Jamie Siggers Chair
Bristol Club



Like many of the CE clubs, Bristol Club suffered during the Covid period, being unable to run many of our usually well-attended events and trying to compete with the barrage of online events.

Therefore 2022 was to be our rebirth and reinvigoration of the club and it has regrettably not been the explosion of enthusiasm that we had hoped for. We continue to struggle to stand out amongst a wealth of organisations running events in Bristol. We have 193 signed up members either of the club or with Bristol Club as their nominated club to whom our event details are issued together with the many subscribers and contacts exposed to our social media posts and yet interest and attendance remains subdued.

However, the dedicated team of committee members continues to strive to find the key to once again establishing attendance at our events as essential within the Bristol area allowing us to effectively disseminate knowledge, best practice and return to being a locally respected organisation. To this end we have run two of our Here to Learn events on the Climate Crisis and Building Safety to some success and also re-established our five-a-side competition and raised money for Charity.

The coming year will see the team doubling down on our efforts and trying to run at least one Here to Learn each quarter on themes including Embodied Carbon, our 2023 legal update, skills and employment with Building Bristol and Inclusivity and Diversity with our Partners at Commission for the Bristol Property Inclusion Charter. Obviously, we will run the five a-side competition again and aim to hold an Autumn seminar on a theme to be agreed. Finally, we will shortly be advertising for our Little Bristol Sailing day out of Port Solent to be held on July 7th.

We continue to strongly support education in our industry and once again sponsored The Constructing Excellence Bristol Club Prize awarded for outstanding performance in collaboration and team working to Quantity Surveying and Commercial management graduates at the University of West of England. The most recent prize winner, Annie Jeremias of Kendall Kingscott has recently taken up the part of our prize of a seat on the committee and last past winner Bethany Denner of Aecom has agreed to stay on the committee going forwards.

For more information please contact
JamieSiggers@campbellreith.com



Events we ran
Climate Crisis, Here to Learn
 20th June 2022
 VVV Office, Bristol

This event brought together three key themes around our challenge of achieving our net carbon in our industry. Patrick O'Flynn of UWE presented and then lead a workshop considering how we can develop the necessary skills within the construction sector. This was followed by Andrew Carpenter leading a session on the Construction Leadership Council's Zero Performance workshop. The final session considered the challenge of retrofit to achieve net zero carbon emissions lead by Louise Trenchard of Turner and Townsend.



CEBC Five A-side football tournament
 30th September 2022
 Goals Bristol South

Sixteen teams took part in our annual five aside tournament on a wet and windy Friday afternoon in September. In an amazing demonstration of teamwork Faithful+Gould won a tense final match against J&G Fencing Ltd after a penalty shoot out, while Smith Consult won the shield. As always the event was raising funds for Help Bristol's Homeless and managed to raise over £1,250 surplus for the charity.



Building Safety, Here to Learn
 5th October 2022
 Burges Salmon Office, Bristol

The Building Safety Act was enacted on 28th April 2022 and yet the majority within the industry are largely unaware of its impacts and the legal requirements for meeting the act. This Here to Learn was set up to disseminate knowledge of the act and proposed best practice. Tom Weld of Burges Salmon started our event with an update of the act and the known Gateway requirements including the Golden Thread and the workshop session collated thoughts on what should be collated to suit this. The second session lead by Marcus Saunders of Gallagher considered the implications of the events leading to the act and the act itself on regulatory measures and insurance providers. Finally, Richard Kochanski of CESW introduced us to CESW's *Enlightened Clients' Journey to Project Quality and Compliance* guide.



Giles Blight Chair

Cornwall Hub



The Cornwall Hub has continued to flourish in this exciting, post pandemic world. The construction industry is booming and this means our committee and our members are and have been extremely busy, despite this, we have been active this year. We have tried to focus our efforts on more concentrated events around the year's key topics, namely, Net Zero, Building Safety, Conservation and Procurement.



We launched the year with a set of seminars looking into Building Safety, Cladding Remediation and a Legal Perspective. This event included a former London Fire Brigade Commander talking about Grenfell and then moved onto the legal perspective of building safety in high rise by Stephens Scown. The second part was on cladding remediation and Bailey Partnership shared extensive knowledge of this, following the success of the Devonport Towers in many awards last year.

As a hub we were also pleased to launch the CESW Leadership Dinners, with Gallagher as the main sponsor, inviting influential business / council leaders to the Watergate Bay hotel for an evening of discussion and collaboration, endeavouring to drive change within our county. The setting and food was delicious and the discussions were open and informative making it a huge success.

We have welcomed the return of our site visits and networking events, with successful visits to the Hall for Cornwall in May, witnessing conservation and regeneration right in the heart of the county's city of Truro. The tour was preceded by a presentation by WWA and Julien Boast, Creative Director and CEO. In July we visited Bartilever Hill with Ilex Construction, a site which is conserving former disused barns into high end residential dwellings, looking at the circular economy and material reuse in an exemplary but innovative way. We have other site visits planned for the year, Treveth are planning on showcasing their negative carbon development at Tolgus Redruth and Acorn Blue are planning on allowing the members to visit the Grade II listed, Old County Hall redevelopment. Other interesting tea time virtual tours are also planned with schemes such as the expansion of the Grade II Listed Fowey Hall Hotel and York House, Penzance.



July has been a busy month as the hub hosted a Decarbonisation at the Sharp End event at Penryn Campus, thanks for FX Plus. The event was introduced by Karl Freidrich, with presentations by Professor Peter Crossley of Exeter University who provided a very insightful presentation on Smart Grids. As well as Greg Slater, Head of Design, Decarbonisation & Environment then shared the innovative work they are doing on The Development and how they are imperative for smart grids. Events like this are testimony to Constructing Excellence and the construction industries drive to share knowledge, collaborate and change.

Sarah Walker of Arcadis also arranged a very insightful Teatime talk called 'Shaping the Future of the Royal Cornwall Hospitals Trust', which was expertly delivered by Roberta Fuller, Head of Hospital Reconfiguration & Programme Director, Women and Children's Hospital.

We then enjoyed a short summer recess before holding an event to promote growth within G4C, whilst raising money for Cornwall Mind with our Pasty and Pint networking night. Many thanks to all who came and to Classic Builders and Bailey partnership for the sponsorship.

Events yet to come are very much still in the planning and may therefore stretch into early next year, depending on our volunteers' other commitments. Classic Builders, Harrington Homes and Kier Construction are planning an interactive 'Meet the Supply Chain' Event, which includes a 'Pitch and Purchase' section for local start up businesses. We will also do further parts to our 'Decarbonisation – at the sharp end' presentation with a Clean and Green event being arranged by WWA and Tevi, as well as a Carbon Offsetting workshop.



For more information please contact
g.blight@baileyp.co.uk



Our hub continues to seek more volunteers and members from across the supply chain, who either live or work in and around Cornwall, to help CE to implement the desire to learn and share 'best practice', use knowledge to positively influence change and provide a platform to network with forward thinking built environment professionals. I also thank my committee past and present and all the people who have contributed throughout this year and the ones to come.



South West
2022
Awards

Conservation &
Regeneration Award
Hall for Cornwall

Tanya Loosemore Chair Devon Club

For more information please contact
tloosemore@rgbrec.co.uk



The last 12 months seems to have come and gone in a blur! I'm pleased to report that having resurrected The Exeter & Devon Club late last year, the decision was made to merge with the Plymouth Club giving us the newly formed (or reformed for some!) Devon Club. Having started the year with just 4 committee members, we now sit as a group of 10 and as a result, the club is building momentum and growing in numbers.

Our membership base is diverse creating a great network including individuals working in residential and commercial development, engineering, contracting, architecture, consultancy, maintenance, sub-contracting, supply chain, local authority and social housing providers. This has allowed for some interesting and lively debate at the 'Crisis in Construction' summit and the Plymouth Leadership Dinner earlier in the year.

A site visit and tour of the now multi award-winning St Sidwell's Leisure Centre was well attended and the inaugural 'Battle of the Builds' showcasing our industry to year 10 and college students was spearheaded by the Devon Club which was a great success involving our members competing for the top prize as voted for by the pupils.

Looking forward, as a club, we are keen to continue to bring people together, share knowledge and challenge where necessary. Future events include EDI in Construction – Driving Change, some exciting site visits and project updates on highly anticipated schemes in Devon and the Exeter Leadership Dinner.

We are hoping to welcome more individuals to join us and take advantage of all the club and region has to offer.



South West
2022
Awards
Winner of Winners Award,
Building Project of the Year
and Net Zero Award
St Sidwell's Point

Robin Thorpe Chair Dorset Club

For more information please contact
robin@thorpe.uk.com



The Dorset Club was just getting (re)started when the Covid pandemic struck a couple of years ago. As we did not have an existing and strong base of members, we did lose momentum as people were forced to stay at home.

We did manage to maintain our membership and to find a few more using the excellent LeadersMeets as a way to encourage people to join us. We finally made a return to in-person meetings with a successful site visit to the Durley Chine Environmental Hub, a new building made from recycled materials on the seafront in Bournemouth.

We plan to meet again once more this year and then provide a full schedule of events in 2023. Our focus will be on the ramifications for construction arising from the Building Safety Act.



Jonathan White Chair

Gloucestershire Club

For more information please contact jonathan.w@quattrodesign.co.uk



Year on year the CE Gloucestershire Club has continued to represent the interests of the construction sector both locally and act as a regional hub of the Constructing Excellence South West and national Constructing Excellence organisation.

Having had to adapt as a club over recent years, by rethinking events and capturing the needs of our local members we continue to thrive. This is once again benchmarked, as our membership levels are now at a record high and continue to grow.

We successfully manage to maintain and deliver our monthly events programme which are a balanced mix of site visits, seminars, guest speakers and social gatherings. With each event at capacity levels, we attract a fantastic range of professionals who engage and spark lively debate across many construction related sectors.

The Gloucestershire committee has grown to help support the club at all levels. Made up of a wide range of disciplines, their dedication is what drives the club's success. Each monthly meeting sparks lively debate but also offers a support network for every event we host with everyone working collaboratively. They continue to evaluate the core values of Constructing Excellence and promote their various theme groups.

The club has also adopted a local charity, the Gloucestershire Community Foundation. They are a local organisation who through philanthropy, grant making and developing partnerships with other charities, help strengthen the capabilities of the local communities in order that they are able to thrive. By providing both financial and professional support, CE Gloucestershire aims to help those local communities too.

The club has also focused on reaching out to various educational establishments across the county, resulting in a healthy increase of our student member levels, giving them a platform to engage with construction peers and potential future employers. This has led to a new initiative being launched by CE Gloucestershire in 2022. Still very much in its infancy, the primary focus of this 'Education Forum' is to bridge the gap between employers, educators and students, identifying gaps in skills, experience and employment. We look forward to seeing what results this brings in the coming years for the future leaders of construction in the South West.

Here is a small selection of events which took place during in the past year.



Kings Quarter, Gloucester – Phase 3B

We hosted a site visit and tour of phase 3B of the King's Quarter development in Gloucester. As one of the first phases of the overall £85m development in the heart of the city, it comprises 19 apartments and a Tesco store.

Hosted by both the main contractor, E.G. Carter, and lead designers Quattro Design Architects, the tour gave the capacity crowd an insight into the design and construction of this city centre development. At the time of the visit, guests were able to see the five storey building at various build stages and enjoy the cathedral and city views from the shared roof terrace.

Another similar tour was arranged with first year architecture students from the University of Gloucestershire. This resulted in a very engaging conversation between the project team and the students.



CE Gloucestershire Annual Conference

In June we were delighted to be able to hold our first Conference since 2019. Held at the University of Gloucestershire's School of Business & Technology at their Oxstalls Campus, our exhibitors and guests were able to listen to industry leaders talk about construction health and well-being.

As in past years, as well as celebrating the successes and growth of the county's construction sector businesses, we put on talks that focused on a particular theme. This year we will look at 'Health – Building a Healthy Industry'. Guests joined together to share their stories of designing and building for the healthcare sector, and looking after the health and well-being of their own workforce.

Attended by 35 exhibitors and around 150 guests, this is a unique networking opportunity for construction professionals.



Monthly Networking Breakfasts

Our monthly networking breakfast events have returned to capacity levels following the lift of Covid restrictions. Split between venues in Gloucester and Cheltenham, these events are well attended by a range of our members and prove to be a valuable networking tool.

These events allow our members to bring their own guests which proves invaluable in recruiting new club members.



Cheltenham Secondary School

A visit and tour of Kier Construction's site at Cheltenham Secondary School was held in August this year. After a short introduction to the project, this was followed by a guided tour and the opportunity for questions.

Now complete, the £30m school will accommodate 900 pupils aged 11 to 16 and provides an area of just over 7,900m² over two floors. The design took reference from its sister school, one of England's highest performing comprehensive

schools, Balcarras Academy, and includes state-of-the-art facilities such as a 450-seat main hall with raised seating to create a performance space, four court sport hall with sports gallery, all weather pitches and a multi-use games area.

Liz Bennett Chair

Somerset Club

For more information please contact liz@safetyindesign.org.uk



CE Somerset Club has suffered twice because of the Covid-19 pandemic – firstly because of the national lockdowns and the restrictions it placed on us all – and now because Somerset is such a hive of construction activity we have all been too busy to find time to run events!

This is my last report as Chair of Somerset Club. I have passed the responsibility on to Jayne Hall of Cook Brown Building Control, who is a past president of CAFE, so the Club and its members are in good hands.



Carol Heneghan Chair

Swindon & Wiltshire Club

For more information please contact carol.heneghan@bouygues-uk.com



Throughout the last year Swindon & Wiltshire Club has been quiet whilst its committee have been reorganising for the future.

We are looking to bring a handful of events forward next year that focus on the issues facing the industry, but with a local Swindon & Wiltshire theme. Sustainability and MMC will be key themes with CPD events on Achieving Net-Zero Carbon on Construction and Part L changes and Future Homes Standards.

One initiative we did engage with was the CESW Leadership Dinners taking place across the south west, for a round table discussion on the key issues facing our sector.

We will also be holding social events aimed at meeting our current and new members. We are very much looking for new members to our committee, if you'd like to join please do get in touch with me, you'd be very welcome.



South West
2022
 Awards

Integration and Collaborative Working Award
 George Parker Bidder Building, Exeter Science Park

Richard Kochanski Chair

Building Safety

For more information please contact richardkochanski@gmail.com



The Building Safety Theme Group has been focusing on the changes needed in the industry as a result of the Building Safety Act.

The challenges in adopting a different approach to the way we do things has been a constant theme in the talks and discussions held by the group. Attention has been given to how building professionals are being helped and encouraged to improve their competence. This is necessary when working on the buildings in scope under the new regulatory framework for high-rise buildings and dwellings.

Graeme Whitty, National Product Director at Willmott Dixon, gave an overview of the work they have been doing in response to the Act. This includes the early identification of the risks in a building project, and setting minimum competency standards for their people and the professional organisations and supply chain partners they work with. They have matched their company systems to suit the evidence required at the various gateways given in the Act.

Anna Thompson, Head of Engagement at Local Authority Building Control (LABC), explained how it was preparing for the registration of Building Control professionals required by the Act. To support its surveyors in meeting the formal assessment of competence needed for registration additional training has been provided. Also, there is a recruitment drive to attract and train an extra 150 building surveyors. These resources will be necessary as LABC have a significant role in assessing and certifying all the existing high-rise buildings.

Work on the *Enlightened Client's Journey to Project Quality and Compliance* guide progressed and it was published in the last quarter of 2022. It is hosted on the CESW website Building Safety page and is in several sections to reflect its audience.

I am stepping down as Chair of this group and am happy to announce that Liz Bennett of Safety in Design will be taking over. This group will be in safe hands.



South West
2022
Awards

Client of the Year Award
Gloucestershire County
Council Asset Management
& Property Services



A questionnaire asking 'Are You an Enlightened Client?' can be taken by scanning this QR code.

Imogen Snell Chair

Climate Crisis



The Climate Crisis Theme Group's motto is to encourage collaboration to influence and enable sustainability and innovation to build a resilient future in the South West and beyond.

As a group we have had a flourishing year. We have had very well attended quarterly meetings that have continued online and have a group that is made up of a wide range of South West professionals – from architects to engineers, project managers, contractors, property developers and council workers. This helps to gain an insight from all aspects of the construction industry and always leads to interesting conversations and discussion.

As a group we have been focusing on upskilling ourselves on a wide variety of important topics and latest thinking out there to help us influence and enable sustainability in our work places. As the climate crisis continues to be at the forefront of every aspect of the construction industry, it has been fantastic to see topics covered in our meetings across the board.

This year we have had great talks from South West members and industry professionals on Scope 3 emissions, Zero Carbon Concrete and the Soft Landing frameworks to name a few. We have also brought up The Living Building Challenge, Embodied Carbon challenges and looked at Net Zero project examples around the South West area. We have also highlighted throughout the year technical sustainability and innovation documents that have been published and released and before the end of the year look to explore some in further depth such as the UKGBC's Nature Based Solutions document issued in May 2022.

As the industry is gathering momentum it is so important to stay informed and be able to upskill and inform others and, as a group, that's what we are all about!

For more information please contact Imogen.Snell@burohappold.com



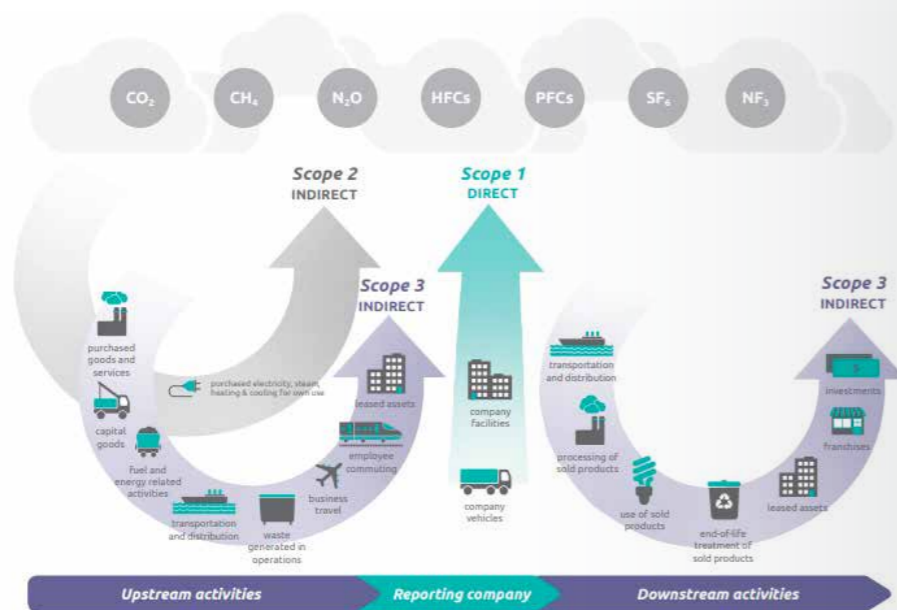
Soft Landings- Definition

A building delivery approach which runs through the project from inception to completion and beyond to ensure all decisions made during the project are based on achieving the project targets and meeting end users' needs.



Scope 3 emissions

The green House Gas Protocol Corporate standards categorises emissions into three scopes. Scope 1 are **direct emissions** from controlled sources such as gas and owned vehicles. Scope 2 emissions are **indirect emissions** such as electricity and Scope 3 emissions are **all indirect emissions** that occur in the **value chain of the reporting**.



Embodied Carbon – The issue and the drive towards consistent, accessible & credible assessment and reporting.

Tom Scott



Living Building Challenge

Natalie King Chair

Future Skills

For more information please contact
Natalie.King@accxel.co.uk



Future Skills is a new Theme Group established within CE South West last year to discuss the immediate labour issues within the industry with a vision to focus and engage by carefully selecting and prioritising the skills needed in the immediate, short and long term.

With group collaborators from further and higher education, industry and trade associations, there is a wealth of knowledge within the theme group. Instead of each delivering projects in isolation, we have decided that our deliverable for 2023 will be a **Building a Better Tomorrow** event:

This aims to be a large event to increase engagement with the younger generation, a collaboration of education and industry to organise an up-scale event to attract a large number of schools in the south west region, approximately 4,000 students from 150 schools over 2 days.

West Point Arena: Exeter Around October/November 2023

- Focused solely on skills
- Aimed at students and parents, and connecting them to the construction industry and education
- Raising awareness of the construction industry
- Standing in unity for greater impact of message and influence

Although in its inception stages, this event would create a template for CESW careers events moving forward and provide an exemplar model for student engagement for future years. Due to overwhelming commitments from my own business, AccXel, I have reluctantly relinquished my role as Chair of the Future Skills Group but will continue to play an active part in the exciting plans for 2023.

South West
2022
 Awards

Innovation Award
 Zero-Carbon Social
 Housing Scheme

Mary Bennell Chair

Smart Construction



The Smart Construction Theme Group has carried out a number of activities over the past year, both online and physically. All events have been well attended and the majority of online meetings have taken the format of a speaking/knowledge sharing session on a matter of interest and then discussions afterwards. In many events we could have discussed at greater length.

This year we teamed up with CE Midlands and agreed to open up our theme group meetings to each other so members got the opportunity to attend double the number of sessions – a visit to the Countryside factory in Bardon, a visit to the Active Building Centre in Gloucestershire and a session on BIM and safety management presented by Citizen Housing.

Projects

The map project that we carried out the previous year does need refreshing and this is definitely part of our plans for the rest of the year. It is interesting to see the change in the number of suppliers / installers in the region over the past 2 years – keep an eye on the website for the updated map.

Our planning meeting in November 2022 highlighted the members wishes to see some case studies and this is definitely something that we need to pick up on over the next few months.

Future Plans

Planned meetings in October 2022 are a visit to an offsite component manufacturer and we are trying to arrange to visit a construction project where large panel systems are being used and to have some dragons dens pitches around digital construction products / methodologies in the New Year.

Activities and meetings



Sept 2021

Showcasing of a number of Innovate UK Transforming Challenge Projects, we heard from participants of the Challenge, ranging from start-ups to housing associations, within the sector and outside. We found out more about the problems they were solving, and the vision their teams have for industry. Get involved in the shift away from cheapness, towards digital manufacturing, data and digital driven processes and whole-life value.

November 2021

We held a discussion with members and did an on-the-spot survey on what topics should be covered in future sessions and what activities should be carried out.

The voting for the suggested topics was fairly even with the suggestions for *Dragon's Den* style pitches, digital solutions and visits coming out top.

It was also agreed that we should try and encourage some case studies and update the map – both work in progress.

For more information please contact mary.bennell@swpa.org.uk



Feb 2022

An online meeting featuring 3 digital design and construction solutions:

ONLINE HOUSE CONFIGURATOR

- Interact with design and show real-time pricing
- Simplify your sales process, automate pricing offers
- Show off your design choices
- Attract new B2B or B2C customers
- Shorten customer decision making process
- Record and manage design choices

Renee Puusep from Creatamous

Online house configurator tools including 369 pattern buildings an opensource modular construction platform. <https://creatomus.com/>

Rebekah Heywood & Mark Harrison-Guachwin from Siemens

Digital transformation software and evolving into a digital enterprise for offsite manufacturing.

Ivo Tedbury from Automated Architecture (AUAR)

A design and technology studio operating at the intersection between architecture, design, technology and community. <https://automatedarchitecture.io/>

Saffron Grant from Digital Construction Skills (DCS) outlined the offer of free mentoring to help improve the digital capability of your construction business. www.digitalconstructionskills.com

All presentations were most informative and there was much interest from the attendees and anecdotally many people followed up individually with the presenters.

March 2022

Visit to Countryside Factory at Bardon in Leicestershire with the CE Midlands Group to look at their offsite manufacturing facility.

May 2022

Visit to the Active Building Centre – Berkeley in Gloucestershire. The visit was hosted by Stephen Brierly and Dr Jo Atkinson from the ABC. They took us through the Active Building principles and we then visited the demonstration houses where various kinds of heating and ventilation systems had been installed and were run at different times to assess their efficiency and effectiveness.

They were carrying out in depth research into the effectiveness of heat pumps and could provide very useful off the record insights into actual performance against published performance.

June 2022

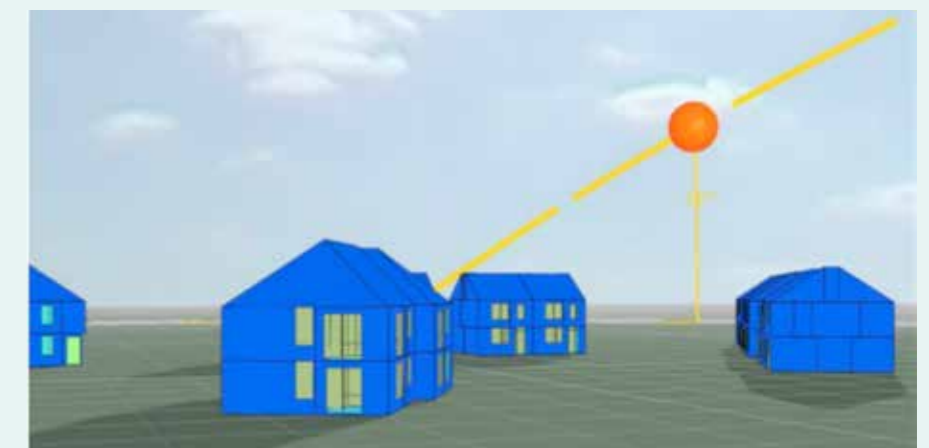
BIM modelling for social housing development focusing on health and safety.

Richard Whittaker and Derek Green from Citizen Housing Group gave an online demonstration of their BIM tool for social housing development talking through how they are using BIM in the social housing context. They are to be congratulated as there are very few social housing organisations that have progressed with BIM themselves. After the meeting they generously shared files showing details of how they had built the BIM systems and offered to help others who wanted to get started.

Summary

It should be noted that all presenters and hosts were very generous in giving up their time and providing background information to attendees such a positive feature in these challenging times.

I want to extend my thanks to Ele George of Elevate for helping with the organisations and arrangements for the meetings and to CE Midlands for sharing the events. Of course thanks to Lynn Boughton for her promotion and publicity.



Awards 2022 Shortlist



Headline Sponsor
Southern Construction Framework



Drinks Reception Sponsor
Kingston Barnes



Entertainment Sponsor
Stepnell

SME of the Year Award

Bailey Partnership
Kingston Barnes
Mode Consult
Mobius Works
Coreus Group
John Grimes Partnership
CGL

Value Award

King Ina School, Somerton
BAM, Somerset County Council, Stride Treglown, AECOM, Hydrock, Southern Construction Framework

Taunton Diagnostics Centre
Kier, North Somerset NHS Trust, Totus, Equitex

Conservation & Regeneration Award

Kings Square, Gloucester
E G Carter & Co, Gloucester City Council, The Reef Group, Ginkgo Projects, Quattro Design Architects

Hall for Cornwall
Ward Williams Associates, Burrell Foley Fischer, Kier, Currie & Brown

Mount Dinham Almshouse Restoration Project by Cornerstone Housing Ltd
Cornerstone Housing, Heighway Field Associates, TWP Engineers, Williams & Burrows Heritage Repair

Admiralty House
Ward Williams Associates, ADG, Bell Group, Airey & Coles, Method Consulting, Gillespie Yunnice Architects, Mount Wise

Archway Project, Bath
Beard Construction, Feilden Clegg Bradley Studios, Edmond Shipway, Heritage Services Bath & North East Somerset Council

Bath Quays South
BAM, Bath & North East Somerset Council, Penoyre & Prasad, Gardiner & Theobald, Buro Happold, Hoare Lee, Southern Construction Framework

Health, Wellbeing & Safety Award

Passive Fire Safety Measures – Taylor Lewis
Porteous Groundworks Ltd

Innovation Award

Zero-Carbon Social Housing Scheme by Zed Pods & Mid-Devon District Council
Zed Pods, Mid-Devon District Council

Assembly Building A – designing out thermal breaks
Arup, AXA, Bell Hammer, AHMM, Galliford Try

Science Creates Old Market: scale up space for Bristol's innovation – Science Creates, Oxford Architects

Net Zero Award

Zero-Carbon Social Housing Scheme by Zed Pods & Mid-Devon District Council
Zed Pods, Mid Devon District Council

George Parker Bidder Building (GrowOutBldg-3), Exeter Science Park
Morgan Sindall, Exeter Science Park, NPS South West, LHC, Southern Construction Framework, Clarkebond, Grainge Architects, SDS

Covered Lagoon to Capture Biomethane
Bennamann Ltd, Cornwall Council, MAC Construction, Stonbury Ltd

St Sidwell's Point
Kier, Exeter City Council, Randall Simmonds, Space & Place, Arup, Gale & Snowden, Warm, TClarke

CLiCCC Project
Decarbonising Lithium Mining Through Circular Economy – Cornish Lithium, HSSMI Trading, Imerys Minerals

People Development Award

CGL Career Path
Card Geotechnics

Porteous Groundworks Ltd

St Sidwell's Point
Kier, Exeter City Council, Randall Simmonds, Space & Place, Arup, Gale & Snowden, Warm, TClarke

Kingston Barnes

Equality, Diversity and Inclusion Award

Curtins
Kingston Barnes
CGL

MMC Award

Zero-Carbon Social Housing Scheme by Zed Pods & Mid-Devon District Council
Zed Pods, Mid Devon District Council

Trevassack Lake
Frame Homes, Brady Construction, Lavigne Lonsdale, Childrens Sailing Trust

Estuary House, Shaldon
Allwood Timber, Morton Scarr Architects, Denton Powell, Go Green Engineering

Integration & Collaborative Working Award

Trevassack Lake
Ward Williams Associates, Lavigne Lonsdale, Brady Construction Services, Davey & Gilbert, Helford River Childrens Sailing Trust

Quayside House: Kier Construction and Gloucestershire County Council
Kier, Gloucestershire County Council, Adams Fletcher & Partners, ADP

George Parker Bidder Building (GrowOutBldg-3), Exeter Science Park
Morgan Sindall, Exeter Science Park, NPS South West, LHC, Southern Construction Framework, Clarkebond, Grainge Architects, SDS

G4C Future Leader Award

Andrew Walker
Lavigne Lonsdale

Steve Morgan
CGL

Client of the Year Award

Gloucestershire County Council Asset Management & Property Services
Exeter City Council

Bath & North East Somerset Council

Residential Property of the Year

Zero-Carbon Social Housing Scheme by Zed Pods & Mid-Devon District Council
Zed Pods, Mid Devon District Council

Admiralty House
Ward Williams Associates, ADG, Bell Group, Airey & Coles, Method Consulting, Gillespie Yunnice Architects, Mount Wise

The Liner
Acorn Property Group, AH Construction Solution

St Loyes
Kier, Exeter City Council

Little Cosgarne
Taylor Lewis, Harbour Housing

Danesfort
A'Bear & Ball Architects, HLN Engineering

The Yealm
Grainge Architects, Red Earth Developments, Devon Contractors, QSPM Consultants, PCA Consulting Engineers, Hulley & Kirkwood

Salisbury Plain Training Area – Service Family Accommodation
Lovell Partnerships, Defence Infrastructure Organisation, Tetra Tech, Wiltshire Council, Southern Construction Framework

Civil Engineering Project of the Year Award

Land East of Harry Stoke, Earthworks & Infrastructure Works
Chumgold Construction, Wainhomes, South Gloucestershire Council

Kings Square, Gloucester
E G Carter & Co, Gloucester City Council, The Reef Group, Ginkgo Projects, Quattro Design Architects

Building Project of the Year Award

Kings Square, Gloucester
E G Carter & Co, Gloucester City Council, The Reef Group, Ginkgo Projects, Quattro Design Architects

The Liner
Acorn Property Group, AH Construction Solution

Rutherford Diagnostic Centre
Kier, North Somerset Trust, Totus, Equitex

Quayside House
Kier Construction and Gloucestershire County Council – Kier, Gloucestershire County Council, Adams Fletcher & Partners, ADP

St Sidwell's Point
Kier, Exeter City Council, Randall Simmonds, Space & Place, Arup, Gale & Snowden, Warm, TClarke

Hall for Cornwall
Ward Williams Associates, Burrell Foley Fischer, Kier, Currie & Brown

Trevassack Lake
Ward Williams Associates, Lavigne Lonsdale, Brady Construction Services, Davey & Gilbert, Helford River Childrens Sailing Trust

Brooks Laundry
Halsall

Awards 2022 Winners

**CESW Awards 2022
Winners**



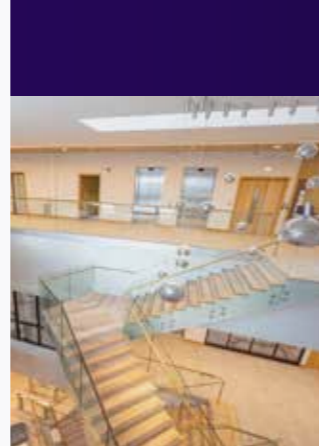
**Achiever of the Year
AccXel**



**Building Project of the Year
Highly Commended
Brooks Laundry**



**Building Project of the Year
St Sidwell's Point**



**Innovation Award
Science Creates Old Market:
scale up space for Bristol's
innovation**



**Integration and
Collaborative Working
Award
George Parker Bidder
Building, Exeter Science Park**



**MMC Award
Zero-Carbon Social Housing
Scheme by Zed Pods &
Mid-Devon District Council**



**Net Zero Award
St Sidwell's Point**



**Civil Engineering Project
of the Year
Land East of Harry Stoke,
Earthworks and
Infrastructure Works**



**Client of the Year
Gloucestershire County
Council Asset Management
& Property Services**



**Conservation &
Regeneration Award
Highly Commended
Archway Project, Bath**



**Conservation &
Regeneration Award
Hall for Cornwall**



**Net Zero Award
Highly Commended
Covered Lagoon to
Capture Biomethane**



**People Development
Award
CGL Career Path**



**Residential Property
of the Year Award
The Yealm**



**Residential Property of the
Year Highly Commended
Little Cosgarn**



**Equality, Diversity
and Inclusion Award
Kingston Barnes**



**Equality, Diversity
and Inclusion Award
Highly Commended
CGL**



**G4C Future Leader Award
Steve Morgan, CGL**



**Health, Wellbeing
& Safety Award
Passive Fire Safety
Measures**



**SME of the Year Award
John Grimes Partnership**



**Special Award
Bylor NNB**



**Value Award
Taunton Diagnostic Centre**



**Winner of Winners
St Sidwell's Point**



Awards Judges & Sponsors

Without the support and commitment of our judges, we would not be able to run the awards every year. We would like to express our sincere thanks to each of them as they are the unsung heroes of our awards programme.

Dan Macey [Holistic Housing Solutions](#)
 Emma Osmundsen [Exeter City Living](#)
 Carol Heneghan [Bouygues](#)
 Kingsley Clarke [SCF](#)
 Eleanor Thomas [SCF](#)
 Kevin Harris [Bamboo Technology Group](#)
 AJ Eaton [Bell Group](#)
 Robin Jackson [Taylor Lewis](#)
 Andrew Goodenough [Bristol Airport](#)
 Jamie Siggers [Campbell Reith](#)
 Robin Thorpe [Thorpe Engineering](#)
 Mary Bennell [SWPA](#)
 Robert Sargent [Stride Treglown](#)
 Helen Baker [UWE](#)
 Anna Wood [Michelmores](#)
 Tanya Loosemore [RGB Recruitment](#)
 Gemma Welsher [Willmott Dixon](#)
 James Beckly [Ward Williams Associates](#)
 Jonathan Davis [Powerhaus UK](#)
 Lizzy Painter [RWK Goodman](#)
 Giles Blight [Bailey Partnership](#)
 Liz Bennett [Safety in Design](#)

 Shaping public construction		Headline Sponsor Southern Construction Framework	
 Achiever of the Year Award BAM Construct	 Building Project of the Year Award Flagship Recruitment	 Client of the Year Award Kier	 Civil Engineering Project of the Year Award Girling Jones
 Conservation and Regeneration Award Willmott Dixon	 Health, Safety and Wellbeing Award Safety in Design	 Innovation Award Xtratherm	 Residential Property of the Year Award SCF Residential
 G4C Future Leader Award Morgan Sindall	 Integration and Collaborative Working Award Hinkley Point C / Bylor	 MMC Award Aquarian Cladding Systems	 People Development Award Weston College
 Value Award Hinkley Point C / Bylor	 Equality, Diversity and Inclusion Award Bouygues	 SME of the Year Award CITB	 Net Zero Award Ward Williams Associates
 Drinks Reception Kingston Barnes	 Entertainment Stepnell	 Winner of Winners Award SCF	 Special Award CESW



South West
2022
 Awards
 Residential Property of the Year Award
 The Yealm

Clubs administered by the regional centre

Club & Regional Members

CONSTRUCTING EXCELLENCE Bath Club

Regional	BB3 Projects Ltd
Club	Buro Happold Engineering
Club	Julia Davenport-Cooper (JDC Law Ltd)
Regional	Kier Construction Western and Wales
Regional	Mann Williams
Regional	Daniel Lugsden (Nash Partnership)
Club	MEA Consulting
Regional	Merlin Housing Society
Regional	Royds Withy King
Regional	South West Project Management

CONSTRUCTING EXCELLENCE Cornwall Hub

Regional	Arcadis Cornwall
Club	Bailey Partnership
Club	Building With Frames
Club	Brady Construction Services Ltd
Club	Classic Builders
Club	Cormac Solutions Ltd
Club	Cornwall Consultants Ltd
Club	Currie & Brown UK Ltd
Regional	Emily Hayden (E Hayden Associates Ltd)
Regional	Falmouth Exeter Plus
Regional	Foot Anstey LLP
Club	Frame UK
Regional	Gilbert and Goode Ltd
Regional	Gwella Contracting Services Ltd
Club	Harrington Homes (sw) Ltd
Club	Hewaswater Engineering Ltd
Club	Hoare Lea
Club	Joanna Godolphin (Pink Pebble Consulting Limited)
Regional	Lacey, Hickie & Caley
Regional	Lavigne Lonsdale
Regional	Mark Diamond (Marshalls)
Club	ModBox Spaces Limited
Club	Poynton Bradbury Wynter Cole Architects Ltd
Regional	Prenn Limited
Club	PSSW Ltd
Regional	Shore Building Services Ltd
Club	Stephens Scown LLP
Regional	T Clarke Contracting Ltd
Regional	Tom Jones (Constructiv)
Regional	Treves Holdings LLP
Regional	Trewin Design Architects Ltd
Regional	Truro Penwith College
Club	Truro Timber Frame Ltd
Regional	University of Exeter

CONSTRUCTING EXCELLENCE Bristol Club

Regional	ADP Architecture Ltd
Regional	Alun Griffiths (Contractors) Ltd
Regional	Andrew Scott Limited
Regional	Aquarian Cladding
Regional	ARV Solutions
Regional	ATG Group
Regional	Austin-Smith:Lord Ltd
Regional	BAM Construction
Regional	BDP
Regional	Bouygues UK Ltd
Regional	Bristol Airport
Regional	Campbell Reith Hill LLP
Regional	Churngold Construction Ltd
Regional	Fulkers
Regional	Gavin Way (Silcock Dawson & Partners Ltd)
Regional	Gleeds
Regional	Halsall Construction Ltd
Club	Hills Homes Developments Ltd
Regional	Ian Harries (Mott MacDonald)
Regional	ISG Construction Ltd
Regional	J&G Fencing Ltd
Club	John Perkins Construction Limited
Regional	Joyner PA Ltd
Regional	Michelmores LLP
Regional	Mobius Works Ltd
Regional	Natalia Sokolov (Thrings LLP)
Regional	Paul Weston (Box Twenty Consulting Engineers Ltd)
Club	Purcell Architecture
Regional	Red Dot 365
Regional	Richard Kochanski
Regional	Rider Levett Bucknall UK Ltd
Regional	Royds Withy King
Regional	ScanTech Digital Ltd
Regional	Scotframe Timber Engineering Ltd
Regional	SRA Architects
Regional	Stepnell Ltd
Regional	Steve Ward (Lean Construct)
Regional	Stride Treglown
Regional	Sweet Construct Limited
Regional	Tercon Ltd
Regional	University of the West of England
Regional	Veale Wasborough Vizards LLP
Regional	Vinci Construction UK Ltd
Regional	Will Harper (Faithful + Gould)
Regional	Willmott Dixon Construction Ltd
Regional	YTL Developments UK Ltd

CONSTRUCTING EXCELLENCE Devon Club

Club	Airey & Coles
Club	Apex Scaffolding Exeter Ltd
Regional	Ashfords LLP
Regional	Austin and Hobbs Ltd
Regional	Avalon Planning Ltd
Regional	Bell Decorating Group Ltd
Regional	BuildX(SW)Ltd
Regional	Coreus Group
Regional	Cornerstone Housing
Regional	Exeter College
Regional	Faithful+Gould
Regional	Grainge Architects
Regional	Holistic Housing Solutions Ltd
Regional	Jonathan Davis (Powerhaus UK Ltd)
Regional	Kay Elliott Architects Ltd
Regional	Kendall Kingscott Ltd
Club	Kimberley Heywood (Vistry Homes)
Regional	Lacey, Hickie & Caley
Regional	LiveWest Homes (Liverty) Ltd
Regional	Mark Muir (Mark Muir Architect)
Club	Matthew Edward
Regional	Michelmores LLP
Regional	Morgan Sindall Construction & Infrastructure
Regional	Plymouth Community Homes
Club	RGB Recruitment Ltd
Regional	Services Design Solution
Regional	South West Norse Ltd
Regional	Southern Construction Framework
Club	Spinnaker Land Ltd
Regional	NPS South West Ltd
Regional	Penny Wood Talks Ltd
Regional	Structurehaus
Regional	Taylor Lewis Ltd
Regional	Tilbury Douglas Construction Limited
Regional	Tony Drake (Fenster Ltd)
Regional	Trowers & Hamlins
Regional	Ward Williams Associates

CONSTRUCTING EXCELLENCE Swindon & Wiltshire Club

Regional	Atkins Ltd
Regional	Audley English (Buildco Offsite Architecture)
Regional	M J Church
Regional	Nationwide Building Society
Regional	Richard Henman
Regional	YB Fixings Ltd

CONSTRUCTING EXCELLENCE Somerset Club

Regional	Bridgwater & Taunton College
Regional	BYLOR
Regional	Concierge UK
Regional	Design Review Ltd
Regional	Dowlas Property Group
Regional	Harris Bros & Collard Ltd
Regional	Jonathan Davis (Powerhaus UK Ltd)
Club	Melhuish and Saunders Ltd
Club	Resourcing Group T/A Set Square UK
Regional	Safety In Design
Regional	Somax Ltd
Regional	Xtratherm UK Ltd

CONSTRUCTING EXCELLENCE Dorset Club

Regional	C G Fry and Son
Club	Christopher Reeves (Reeves James)
Regional	Construction Carbon Ltd
Club	Greendale Construction Limited
Regional	Hastoe Housing Association
Regional	Magna Housing
Club	MC Plan & Site Services Ltd
Regional	Morgan Sindall Construction & Infrastructure
Club	Robin Conibear (Conibear Consultants Ltd)
Regional	Rollalong Ltd
Club	Space Industries Ltd
Regional	Stepnell Ltd
Regional	Thorpe Engineering Consultants Ltd

Industry Members, Partners & Stakeholders

A

AccXel Ltd

B

BCP Council
 Bridgwater & Taunton College
 Bristol Airport
 Bristol City Council
 Bristol Housing Festival (Part of Bristol City Council)
 British Safety Council
 Building Greater Exeter

C

CADCOE (Construction & Design Centre of Excellence)
 CITB (Construction Industry Training Board)
 Cornerstone Housing
 Cornwall Council

D

Devon County Council
 Dorset Council
 Dowlas Property Group

E

East Devon District Council
 Environment Agency
 Exeter City Living (part of Exeter City Council)
 Exeter College

F

Falmouth Exeter Plus
 FBE (Forum for the Built Environment)
 Federation of Master Builders

G

Gloucestershire County Council

H

Hastoe Housing Association
 Homes England
 HSE

I

Igloo Regeneration
 Innovate UK

K

Kendall Kingscott Ltd

L

LABC - (Local Area Building Control- represents all LA BC teams in England & Wales)
 LiveWest Homes (Liverty) Ltd
 Local Government Association

M

Magna Housing
 Mendip District Council
 Merlin Housing Society
 Mid Devon District Council
 Mobius Works Ltd

N

National Housing Federation
 Nationwide Building Society
 NHBC

P

Plymouth City Council
 Plymouth Community Homes

R

RICS

S

Scape Group
 Sedgemoor District Council
 Somax Ltd
 Somerset County Council
 Southern Construction Framework
 SSDC
 Supply Chain Sustainability School
 SWMAS Ltd (Somerset Innovation Centre)

T

TDA/Torbay Council
 Train4All Construction Academy
 Treveth Holdings LLP
 Truro Penwith College

U

University of Exeter
 University of the West of England

W

Wiltshire Council

National Members

What's Constructing Excellence?

Creating an Industry of Opportunity

Constructing Excellence is a not for profit think tank and best practice organisation charged with improving the performance of the UK construction industry for the benefit of its clients and all stakeholders. It is a platform for industry improvement to deliver better value for clients, industry and users through collaborative working – excellence through collaboration. It does not receive funding from any government source and is therefore self-funding. For many parts of Constructing Excellence the main form of income is received via membership.

Objectives	Theme Groups	Clubs
<p>Performance Influence Networking Not For Profit Alignment Collaboration Leadership Evolution</p>	<p>Climate Crisis Building Safety Smart Construction Future Skills Over-arching Equality, Diversity & Inclusion Health & Wellbeing Procurement on Value</p>	<p>Bath Bristol Cornwall Devon Dorset Gloucestershire Somerset Swindon & Wiltshire</p>

Benefits of Membership

Constructing Excellence South West provides practical support by providing members with the following benefits:

- Networking
- Learn and share best practice principles
- Knowledge transfer
- Enhance profitability / productivity
- Improve understanding
- Access to tools
- Peer intelligence
- Increased business opportunities
- Discounted access to conferences, seminars and workshops
- Raise profile in the region
- Influence the change agenda / industry / Government

Along with discounts to CESW events, the most benefits are gained by active involvement in the work of CESW, particularly the Theme Groups, and with this in mind we would urge members to join the groups.

Membership Overview

In essence the entire Constructing Excellence network is looking for individuals and organisations who want to 'improve the performance of the UK construction industry' through collaborative working and an integrated supply chain and all that brings. Contributing to the CE pot provides the resources needed to ensure this happens, as has been proved by those already actively engaged. There are three levels of membership; National, Regional and Club.

National Members

Any national member of Constructing Excellence has access to all regional activities and events and clubs managed from the South West centre, i.e. Bath, Bristol, Cornwall Hub, Devon, Dorset, Somerset and Swindon & Wiltshire Clubs. This means that personnel from a national member of CE enjoy the same privileges, in terms of discounted events etc., as regional membership.

Regional Members

Any regional member of Constructing Excellence South West has access across the South West events, activities and clubs managed from the South West Centre (i.e. Bath, Bristol, Cornwall Hub, Devon, Dorset, Somerset and Swindon & Wiltshire Clubs). Within your regional membership is an entitlement for one individual from your organisation to also join the individually administered Club of their choice (i.e. Gloucester). Regional membership does NOT entitle its employees to discount from National events where published.

Membership rates start from as little as £120 for individuals / £240 for companies and are set according to industry spend (clients) or business size (contractors/suppliers/consultants). Full details can be found at cesw.org.uk/join-now

When members join (National or Regional) they are asked if they would like to become members of any Theme Groups. These various groups are:

- Climate Crisis
- Future Skills
- Building Safety
- Smart Construction

Regional members can display their company profile and logo on the CESW website and will have access to the members area of the website.

- * Regional membership does NOT entitle its employees to discount from National events where published.

Club Members

Club Membership within the South West falls into two categories:

- 1 Self-contained clubs i.e. Gloucester. Membership fees are set by each individual club.
- 2 Clubs managed from the South West centre i.e. Bath, Bristol, Cornwall Hub, Devon, Dorset, Somerset and Swindon & Wiltshire. Membership Fees: Organisations £240, Individuals £120.

- Club Membership does not include participation in any of the Theme Groups.

- * Club membership does NOT entitle its employees to discount from National or Regional events where published. Club members only receive discounts for their OWN club events.

South West Clubs are encouraged to publicise their events and activities through the CESW website to ensure as wide an audience as possible.

In Summary

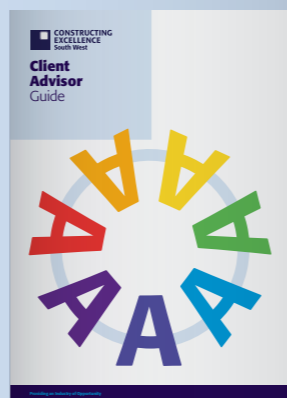
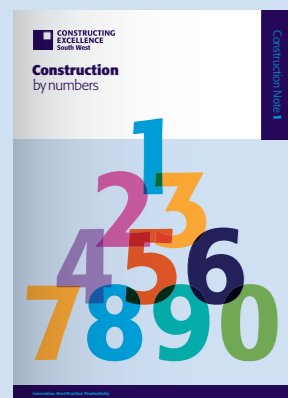
National Members receive National, Regional and Bath, Bristol, Cornwall Hub, Devon, Dorset, Somerset and Swindon & Wiltshire Club discounts as though they are regional and club members.

Regional Members receive regional and Bath, Bristol, Cornwall, Devon, Dorset, Somerset and Swindon & Wiltshire Club discounts as though they are club members.

Club Members only receive discounts for their OWN clubs.

Membership is managed via the website and will renew annually on the anniversary of joining.

To join, visit: cesw.org.uk/join-now or scan the QR code below.





**CONSTRUCTING
EXCELLENCE**
South West



Twitter
@cesouthwest



LinkedIn
Constructing Excellence South West

admin@constructingexcellencesw.org.uk
www.constructingexcellencesw.org.uk



00.0
MRI

South West

2022
Awards

Value Award
Taunton Diagnostic Centre